



**SUBURBAN
CONSULTING
ENGINEERS Inc.**



ORIGINAL



**CIVIL & MUNICIPAL ENGINEERS | LAND SURVEYORS | LANDSCAPE ARCHITECTS
ENVIRONMENTAL SCIENTISTS | GIS SPECIALISTS | CONSTRUCTION OBSERVERS**



**Morris County Municipal Utilities Authority
Parsippany Solid Waste Transfer Station MCC Replacement**

SCE-P08126.Y25

REQUEST FOR PROPOSALS

PROFESSIONAL SERVICES

#02 ENGINEERING SERVICES – SOLID WASTE

MORRIS COUNTY MUNICIPAL UTILITIES AUTHORITY

FLANDERS, NJ | WALL, NJ | HACKENSACK, NJ | ALPHARETTA, GA

www.suburbanconsulting.com | marketing@suburbanconsulting.com

P: (973) 398-1776 | F: (973) 398-2121

Excellence • Economy • Environment

TABLE OF CONTENTS



1	COVER LETTER
2	FIRM PROFILE
3	DESCRIPTION OF SERVICES
4	KEY STAFF RÉSUMÉS
5	PROPOSED HOURLY RATES
6	SIMILAR PROJECT EXPERIENCE
7	CLIENT REFERENCES
8	REQUIRED FORMS & CERTIFICATIONS



1

COVER
LETTER

1





January 28, 2025

Morris County Municipal Utilities Authority
370 Richard Mine Road
Wharton, New Jersey 07885

Attn.: Larry Gindoff
Executive Director

Re.: County of Morris, State of New Jersey
Request for Proposals
Professional Services #02 Engineering Services – Solid Waste
Our File No.: Proposal SCE-P08126.Y25

Dear Mr. Gindoff:

SUBURBAN CONSULTING ENGINEERS, INC. (SCE) is pleased to provide the following proposal package to the Morris County Municipal Utilities Authority (MCMUA) in response to the Request for Proposals (RFP) for the position of Professional Engineering Services – Solid Waste for the contract term. To best serve the MCMUA's needs, it is our proposal that I, Principal /Water Wastewater Department Manager, **Mr. Michael K. McAloon, PE, Assoc. DBIA**, will be the named Engineer for the position. I am intimately familiar with the MCMUA, serving as Solid Waste Engineer and Water Division Consulting Engineer. My resume, along with the rest of SCE's supporting Project Team members are included in our proposal package for review.

SCE currently serves as the MCMUA Solid Waste Division Engineer and has successfully held the Water Division Engineer position since 2015. SCE has the necessary engineering experience to design and oversee construction on capital improvements to the Solid Waste Division facilities, as well as provide support to the MCMUA team. SCE makes key personnel available 24-hours a day, 7-days a week. Solid Waste Collection Systems operate 24 hours per day, and the need to address system interruptions is present on that same schedule. Sometimes, events warrant the advice and consultation of a professional with years of experience in design, permitting, and construction. Additionally, SCE understands the importance of holding regularly scheduled meetings with the MCMUA during the duration of all projects requested by the MCMUA. All key SCE personnel will make themselves available for any and all meetings set by the MCMUA. This is the level of service we offer to MCMUA under the annual contract arrangement.

As requested, please find enclosed one (1) original copy of our proposal package for review. We look forward to working with the MCMUA on upcoming projects. We are available to meet to answer any questions you may have, at your earliest convenience. Should additional information be required, please do not hesitate to contact me. Thank you for your consideration of our proposal.

Very truly yours,

SUBURBAN CONSULTING ENGINEERS, INC.

Michael K McAloon /LEF

Michael K. McAloon, PE, Assoc. DBIA, Assistant Corporate Secretary
Principal /Water Wastewater Department Manager

2

FIRM PROFILE



FIRM PROFILE



OFFICES



Headquarters

96 U.S. Highway 206, Suite 101, Flanders, NJ 07836
P: (973) 398-1776 | F: (973) 398-2121



Northeast NJ

505 Main Street, Suite 314, Hackensack, NJ 07601
P: (201) 646-1776 | F: (973) 398-2121



Central NJ

1350 Campus Parkway, Suite 104, Wall, NJ 07753
P: (732) 282-1776 | F: (732) 722-7319



Georgia

6120 Windward Parkway, Suite 200 Alpharetta, GA 30005
P: (470) 705-0776 | F: (470) 237-0608

SUBURBAN CONSULTING ENGINEERS, INC. is a full-service multi-disciplined engineering, geospatial, land surveying, and landscape architecture firm representing various Clients throughout the region including municipalities, counties, state agencies, homeowners, private Clients, developers, community associations, attorneys, schools and universities, utilities (water, wastewater, and gas), and various other professionals.

“Our goal is to make our Clients' vision a reality”

SCE's experienced professionals provide cost-effective and creative design solutions that balance the natural and artificial environments and respond to the needs of the Clients and communities we serve.

Qualified Full Time Professional Staff Include:

- Professional Engineers (PE)
- GIS Professionals
- Landscape Architects (LLA)
- Structural Engineers
- Certified Municipal Engineers (CME)
- Environmental Scientists
- Professional Land Surveyors (PLS)
- Licensed Site Remediation Professional (LSRP)
- Certified Floodplain Managers (CFM)
- Construction Observers
- Professional Planners (PP)

Committed to

EXCELLENCE • ECONOMY • ENVIRONMENT

Throughout SCE's history, we have valued our relationships with our Clients. Timely, cost-effective completion of a quality work product that meets our Clients' requests is our primary objective. To ensure accomplishment of this objective, a principal of the firm is involved in management roles on every project and communicate with the Clients throughout the duration of the projects. Our technologically advanced management software is continuously upgraded for all projects, and every key staff member can monitor and update critical project information including budgets, schedules, deliverables, and milestones.



WWW.SUBURBANCONSULTING.COM

FIRM PROFILE



CIVIL & MUNICIPAL ENGINEERING

SCE represents municipal and county governmental agencies. Services include special project designs and multi-year appointments and more. SCE provides grant and funding program assistance and has secured millions of dollars of aid for Clients.

PARKS, RECREATION & ATHLETIC FACILITIES

SCE custom-tailors services to meet the needs of each individual facility and the project site. SCE provides planning, design, consultation, and construction inspection services for a wide variety of projects including athletic complexes, parks and recreation facilities, active and passive community spaces, streetscapes, urban design, and waterfront developments.

WATER/WASTEWATER ENGINEERING

SCE provides consulting to public and private-sector water and wastewater utilities. SCE provides engineering services geared towards navigating the ever-changing regulatory requirements, asset management needs, and infrastructure repair/replacements. Planning, design, and construction phase services for the collection, treatment and distribution of water resource systems are at the core of our company's capabilities.

LAND DEVELOPMENT & STORMWATER MANAGEMENT

Our Municipal Engineering staff have extensive stormwater management experience. They are routinely reviewing and designing stormwater management facilities for our various Clients. We are aware of recent legislation, the Clean Stormwater and Flood Reduction Act that authorizes municipalities, counties, and certain authorities to establish a stormwater utility.

NATURAL GAS UTILITIES

SCE provides consulting services to meet the stringent requirements of any distribution, transmission, or pressure uprating project. SCE provides full-service solutions on gas utility projects from initial investigations and route feasibility studies, to surveying and design, to permitting and regulatory authority approvals, to construction administration, inspection, and GIS/as-built services.

LAND SURVEYING SERVICES

SCE offers high-definition surveys and laser scanning to provide our Clients with more innovative solutions. The technology reaches a multitude of services including creating topographical maps, generating 2D and 3D CAD views, and measuring distances, areas and volumes of project sites. Our services address stringent development standards with creative and alternative solutions.

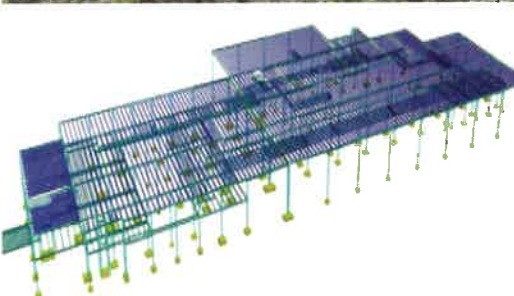


FLANDERS, NJ | WALL, NJ
HACKENSACK, NJ | ALPHARETTA, GA



WWW.SUBURBANCONSULTING.COM

FIRM PROFILE



FLANDERS, NJ | WALL, NJ
HACKENSACK, NJ | ALPHARETTA, GA

GEOGRAPHIC INFORMATION SYSTEMS SERVICES

SCE provides Clients throughout the country with innovative and comprehensive Geographic Information Systems (GIS) Solutions that are customized to meet the specific needs of the project. SCE uses a highly collaborative and responsive approach to developing Integrated Data, Collection, Mapping, Training, and Application Solutions. SCE uses the latest in technology resources, hardware, and software to ensure our Clients get the best and most efficient product and services. SCE's standard is to deliver GIS Services and Solutions that are Affordable, Integrated, Functional, and User Friendly.

ENVIRONMENTAL (LSRP)

SCE has on-staff Environmental Professionals who can provide ASTM International compliant environmental due diligence services and Licensed Site Remediation Professionals (LSRP) who can provide remediation oversight of contaminated sites in accordance with NJDEP's regulations. Additionally, SCE's Environmental staff are experienced with underground storage tank (UST) and Spill Act remediation oversight, design, and implementation.

PERMITTING & REGULATORY COMPLIANCE

SCE provides our Clients with assistance in the generation of strict contract documents that address all aspects of the regulatory industry. Prior to the implementation of any project, an evaluation of implications associated with agency jurisdiction is determined to establish a thorough project approach. This process ensures complete compliance with all federal, state, and local regulations. SCE has decades of experience in dealing with the federal, state, and local regulators and their ever-changing regulatory compliance bureaucracy.

STRUCTURAL ENGINEERING

SCE's Structural Department is inclusive of licensed structural engineers who are experts in their field of study. We provide structural assessments and recommendations on all building types and structures to establish a cost-efficient solution to meet our Clients' needs. Our vast experience and knowledge affiliated with structural design provides us the opportunity to plan, design, construct, maintain and rehabilitate structures associated with projects from simple spans to complex integrated structural members.

CONSTRUCTION ADMINISTRATION & OBSERVATION

SCE's Construction Observers are highly experienced with collecting on-site data, scheduling and coordinating project deliverables, providing site overview services, as well as producing daily project reports. Their knowledge and observation skills are vital in ensuring successful completion of all Client projects.



WWW.SUBURBANCONSULTING.COM

FIRM PROFILE



TEAMING OPPORTUNITIES

SCE is cognizant of our Clients' needs and makes good faith efforts to utilize Diverse and/or Disadvantaged Business Enterprise (DBE) subconsultants and suppliers, including but not limited to Minority Business Enterprises (MBE), Women Business Enterprises (WBE), and Veteran Business Enterprises (VBE). For approximately 30 years, SCE was categorized as a Small Business Enterprises (SBE) and recognizes the importance of providing fair opportunities to companies of all sizes, background, and ownership to ensure diversity. SCE is currently working with several diverse & disadvantaged companies on several large and small-scale projects and continues to actively seek relationships with other consultants to professionally network and team together on projects which will benefit our Clients. SCE's service area extends throughout the nation and our relationship with diverse sub-consultants extends to various regions as well.

SCE'S DIVERSITY COMMITTEE MISSION STATEMENT

"Engaging and supporting the SCE community through research, advocacy, and thoughtful actions to promote awareness and equal opportunity, resulting in a healthier, more diverse and inclusive work environment."

DIVERSITY COMMITMENT STATEMENT

SCE understands our Clients' goals for diversity engagement including SBE, VBE, MBE, and WBE subconsultants. SCE is pleased to announce, that as a result of our long-term ownership transition planning and commitment to advance a greater diversity in our team of capable resources, we are now a recognized **Women Business Enterprise** and certified through the **Women's Business Enterprise National Council (WBENC) and the State of New Jersey**.

As we have grown, we have successfully implemented diversity, equity, and inclusion (DEI) with a focus on investing in and rewarding those who are most capable, and this outcome is evident of the value of this approach to growing our business. As a firm with 38 years of engineering consulting experience with full-service capabilities, SCE is in the unique position to deliver exceptional and responsive services on projects, with the experience and resources to address today's challenges, while also enabling our Clients to equally demonstrate DEI commitment to their associated goals and initiatives.

SCE is defined by much more than this certification but understands this is a value-added feature for some of our Clients. SCE is proud of the diversity of our workforce and takes steps to create and provide an inclusive workplace where all employees can effectively and efficiently utilize their skills. It is our employees' unique perspectives and backgrounds that allow us to be a leader in the industry - not only in Client care but also in Employee care. Our goal is to maintain open dialogue and promote a welcoming environment where everyone feels their input is respected and valued.

Additionally, SCE continues to team with diverse and disadvantaged sub-consultants on projects for our Clients when needed.



FIRM PROFILE



MANAGEMENT & PERSONNEL

SCE's professional staff is supported by a highly competent and technical administrative personnel group with extensive experience in budgeting, managing, and project coordination. To meet our Clients' goals, a Principal of the firm is responsible for managing each project. A Principal of the firm is assigned to and responsible for each and every project in-house. This includes; defining technical procedures and methods required to provide the contracted work, effective communications with Clients, establishing adequate staffing, scheduling, quality assurance, and cost controls.

Professionals and technical staff from appropriate disciplines support the Principal assigned to each project. SCE continues to develop and maintain a diversified staff of professionals and technical support staff at various levels of experience to approach each phase of a project in an economical manner. This provides long term Client relations and assurance of continuity to our Clients in future endeavors. Key personnel are made known to our Clients in advance and are assigned through the completion of the project.

QUALITY ASSURANCE/QUALITY CONTROL

Quality Assurance (QA) is the verification of the effectiveness of quality control measures. SCE utilizes a company-approved Quality Assurance Manual that includes company standards and appropriate Department Units Quality Assurance Checklists. The Checklist items are the major design criteria that are important to assure accurate development of project design and contract documents.

Our QA/QC Manager and Project Manager will ensure that the SCE team adheres to the approved Quality Assurance Manual. Experienced field engineers make reviews periodically during the design process to make sure that the designs are constructible, practical and economical. SCE's reputation over the years is based on its history of providing a quality product within budget. With a multitude of experienced personnel in various disciplines, our Project Managers will utilize the "in-house expert" in the field, as well as consult with individuals who have encountered a specific situation before and addressed seemingly insolvable design issues quickly, efficiently and effectively.

FLANDERS, NJ | WALL, NJ
HACKENSACK, NJ | ALPHARETTA, GA



WWW.SUBURBANCONSULTING.COM

FIRM PROFILE



SOFTWARE & TECHNOLOGY

To provide our Clients quality, cost-effective services, SCE has and will continue to invest in state-of-the-art computer, engineering, and surveying equipment. SCE always maintains industry standard software and technology to provide our Clients with optimal services on a daily basis. In-house software and technology include the following:

- Autodesk AEC Collection
- ESRI ArcGIS Enterprise and ArcGIS Online
- Bentley PondPack, WaterCAD and Microstation
- HEC RAS
- FARO Focus3D X 330 Laser Scanner, Scene, and PointSense
- 3DR Site Scan with DJI Matrice 210 RTK-B Drone
- Trimble Business Center and Realworks
- Many other industry-recognized programs for engineering design

SCE is very cognizant of the fact that our reputation is an important aspect of business and we strive to maintain our Clients' trust and satisfaction throughout each and every project.

"Keeping up with the latest Industry Standard Technology"

Excellence
▪
Economy
▪
Environment

SCE recognizes that all engineering related projects range from both common to complex and in order to provide our Clients with the most cost-effective solutions, a variety of technology and software may be necessary on each individual project. Based on this understanding, SCE offers both highly-revolutionary and conventional state-of-the-art technology and continues to maintain today's latest industry standard technology. Providing our Clients with the best economical and environmentally efficient services is highly valued at SCE.



FIRM PROFILE



- American Society of Civil Engineers
- American Society of Landscape Architects
- American Sports Builders Association
- American Water Works Association
- Association of Environmental Authorities
- Association of State Dam Safety Officials
- Brownfield Coalition of the Northeast
- Council of Landscape Architectural Registration Boards
- Esri
- GA Association of Water Professionals
- NACE International
- NJ Association of School Board Officials
- NJ Association for Floodplain Management
- NJ Licensed Site Remediation Professionals Association
- NJ Recreation & Parks Association
- NJ Planning Officials
- NJ Society of Municipal Engineers
- NJ Society of Professional Land Surveyors
- NJ Society of Professional Engineers
- NJ Water Association
- NJ Water Environment Association
- NY State Association of PLS
- North Jersey Water Conference
- PA Society of Land Surveyors
- PA Water Environment Association
- Project Management Institute
- Society for Ecological Restoration
- Society of Wetland Scientists
- Society for Protective Coatings
- Southern Gas Association
- South Jersey Water Professionals Association
- Society for Protective Coatings
- URISA
- Water Environment Federation

ORGANIZATIONAL AFFILIATIONS

SCE is proud of our group of professionals and management staff. We value our professionals and their dedication to being actively involved in a variety of organizations and membership programs, which apply to their specific fields of expertise. We acknowledge the importance of these programs and affiliations and how they provide SCE with continual up-to-date information and policies that face many of our Clients' projects. We are confident to state that our group of highly educated professionals will meet and exceed all of your expectations.



AMERICAN
SOCIETY OF
LANDSCAPE
ARCHITECTS



NJRPA



American
Water Works
Association



PROFESSIONAL LICENSES & CERTIFICATIONS

- Professional Engineer (FL, GA, NJ, NY, PA, TN, VA)
- Licensed Landscape Architect (NJ, NY, PA)
- Licensed Land Surveyor (FL, GA, NJ, NY, PA)
- Professional Planner (PP, AICP)
- LSRP / Hazwoper Refresher
- Certified Municipal Engineer
- LEED Green Associate
- Certified Floodplain Manager
- Roadway Worker Protection Contractor Safety Cert.
- Certified Playground Safety Inspector
- GIS Professional
- Underground Storage Tank
- Occupational Safety & Health Administration (OSHA)
- DCA – Building Inspector & Construction Official
- Discrimination & Harassment
- Permit Required Confined Space
- Remote Pilot / Airman Cert.
- Qualified Stormwater Inspector
- Wetland Scientist
- NACE Coating Inspector
- Water/Wastewater Operator (W2/C2)



3

DESCRIPTION OF SERVICES



DESCRIPTION OF SERVICES

WASTEWATER ENGINEERING

SCE provides extensive services for municipal and private wastewater systems including engineering design, permitting, rate studies, regulations, project design, and contract administration. SCE is a **leader in wastewater utility engineering** and aims to provide the appropriate engineering solution to each of our Client's system's situation, whether it requires simple Operations and Maintenance (O&M) recommendations, to process equipment, to new construction. SCE's mission is to provide **cost-effective, forward-thinking solutions** that effectively assist wastewater systems in complying with today's challenging **regulatory environment**. By prioritizing open communication and working in partnership with Municipal Utility Authorities (MUA) and local government agencies, SCE facilitates development, improvements, maintenance, operation, and safety of **critical utility infrastructure** for our public and private utility Clients.



Our design experience has benefited many of our Clients in implementing much-needed wastewater infrastructure rehabilitation and replacement projects. These projects are often identified and developed in **Asset Management & Master Plans**, enabling the utilities to plan and budget for their implementation prior to escalating emergency repairs, which often interrupt service at great expense. Our team develops custom, complete & cost-effective solutions that meet our Clients' needs. SCE has **successfully submitted New Jersey Infrastructure Bank (NJIB) loan applications** for wastewater infrastructure improvements and is proficient and knowledgeable in the NJIB protocols. Our staff is familiar with recent NJIB funding modifications and the New Jersey's Department of Environmental Protection (NJDEP) amended Intended Use Plan (IUP) and assist qualified applicants to meet the criteria in a cost-effective and expeditious manner.

In today's continuously changing regulatory climate, wastewater system owners and operators require the assistance of experienced design engineers to ensure the safe and reliable operation of these systems through continuous monitoring and improvements. In a proactive response to issues raised regarding homeland security, SCE invested in a training program for RAM-W certification to prepare vulnerability assessments to further serve our Clients.

CURRENT CONTRACTS AS WATER/ WASTEWATER CONSULTANT

Township of Montclair
Borough of Glen Ridge
Town of Boonton
Town of Clinton
Morris County MUA
Borough of Hampton



DESCRIPTION OF SERVICES

WASTEWATER ENGINEERING

Wastewater Engineering Services Offered:

- Low pressure sewer systems
- NJ I-Bank & USDA funded projects
- Construction observation & reporting
- Operation & maintenance manuals
- Odor control systems
- Discharge permitting
- Industrial & control facility operations & compliance
- Licensed operator services
- As-built plans
- Municipal finance assistance
- Gravity collection system design
- Wastewater collection system modeling
- Chemical feed systems
- GIS System mapping
- Asset management planning
- Lift station facility improvements
- Force main design
- Infiltration & Inflow Studies
- Package wastewater plants
- System evaluation/condition assessment
- Manhole inspection & repairs



Recent notable Wastewater Engineering projects include but are not limited to:

- Bernards Township Sewerage Authority
- Hackensack, City of
- Glen Ridge, Borough of
- Hackensack, City of
- Montclair, Township of
- I/I Implementation Program
- Voorhis Lane Pump Station Rehabilitation
- Sewer & Water System Asset Management
- Licensed Wastewater Operator Services
- Sanitary Sewer System Capital Improvements



DESCRIPTION OF SERVICES

MUNICIPAL ENGINEERING

SCE is a **full-service civil engineering firm** with an extensive array of experience and expertise in representing Municipal and County Clients. Our goal is to provide our Clients with a full scope of services that will eliminate unnecessary outsourcing of services. SCE has the ability, knowledge, and capabilities to work as an integral part of a Project Team to orchestrate professional services to meet our Clients' needs.

SCE has been actively representing local and county governmental agencies throughout the State of New Jersey for over 38 years. SCE's professional staff of numerous licensed Professional Engineers (PE) and Professional Planners (PP) also includes several Certified Municipal Engineers (CME), Certified Floodplain Managers (CFM), and Licensed Landscape Architects (LLA) dedicated to providing exceptional service to the municipalities we represent. Our services range from providing **special project designs to multi-year appointments**.

Specifically, we are experienced in providing design services for all types of **municipal infrastructure projects** such as flood mitigation, combined sewer overflow (CSO) abatement projects, roadway rehabilitation, streetscapes, sanitary sewer improvements, drainage improvements, and recreation facilities. We are experienced in providing assistance to Departments of Public Works (DPW) associated with facility improvements, from evaluation of existing structures to designing entire sites, including composting and recycling facilities and MS4 Permit compliance. Facility projects that have been completed in the past have included salt storage buildings, maintenance garages, weigh scales, fuel depots, and structural repair of buildings. SCE represents many other municipalities as Municipal and/or Planning Board Engineers. SCE has done work for many water and sewer authorities and can share our experience from these agencies with new Clients. Some of our employees are active or past members of other local municipal planning boards, regional sewer authorities, and/or presently serve as elected officials in these local communities, which provides us with a wealth of municipal understanding and experience.

These projects require in-depth **knowledge of municipal and state rules and regulations, grant funding, and New Jersey Department of Environmental Protection (NJDEP) requirements** such as Stormwater Management and Regulatory Compliance. Our team members have the experience and skills necessary to assist municipal and county agencies in approaching and completing these delicate projects.



CURRENT MUNICIPAL/COUNTY POSITIONS

- Municipal Engineer
- Zoning Board Engineer
- Planning Board Engineer
- Special Projects Engineer
- Water/Sewer Engineer
- Utility Engineer
- Conflict/Alternate Engineer
- Municipal Land Surveyor

Special project consultation services have also been provided over the years which have assisted municipal governments in successfully completing projects such as historic preservation, playgrounds, streetscapes, and memorials. SCE is well versed in the guidelines and management of various federal, state, and local grant funding opportunities, including but not limited to those provided under Federal Emergency Management Agency (FEMA), New Jersey Department of Transportation (NJDOT), New Jersey Environmental Infrastructure Financing Program (NJEIFF), NJDEP Open Space and Green Acres, and Community Development Block Grants (CDBG). Our understanding of these grant programs has allowed us to secure several millions of dollars of aid for our Clients. SCE has also been available to assist in the implementation of new ordinances associated with land development, site improvements, redevelopment, and stormwater management.



DESCRIPTION OF SERVICES

PROJECT FUNDING EXPERTISE

SCE understands the financial burden capital projects bring to Municipal Clients, and as such we offer a team of funding professionals that specialize in **Federal, State, and Local** infrastructure funding programs. Our team has guided numerous Clients to secure financing packages through the New Jersey Drinking Water and Clean Water State Revolving Fund (DWSRF and CWSRF) programs, U.S. Department of Agriculture (USDA), Federal Emergency Management Agency (FEMA) Hazard Mitigation Grant Program (HMGP), and Congressional Appropriations. Across these programs, SCE has successfully secured over \$455M in low-interest financing with \$208M in Principal Forgiveness (PF) and/or grants for Client projects.

Below is a summary of available funding programs that SCE can provide guidance to our Clients in pursuing:

New Jersey Drinking Water and Clean Water State Revolving Fund (DWSRF / CWSRF)

Timeline for project to receive funding: 0-3 months & To receive approvals for construction: 12-18 months

This fund is a partnership between the New Jersey Department of Environmental Protection (NJDEP) and the New Jersey Infrastructure Bank (NJIB) to facilitate low-cost financing for the design, construction, and implementation of clean water and drinking water projects. This initiative is administered by the New Jersey Water Bank (NJWB). Currently, **SCE has positioned Clients to receive funding for over 100 projects.**

Senate Appropriations / Community Project Funding Congressional Earmarks

Timeline for project to receive funding: 1-2 years pending Federal Budget approvals

These grants are offered by the US Environmental Protection Agency (EPA). In most cases these grants supplement spending allowances for infrastructure projects that are on the State Revolving Fund (SRF) Project Priority List. SCE has assisted various Clients with projects receiving Congressional earmark funding. By leveraging approvals from the SRF program with effective coordination with EPA divisions, SCE has helped our Clients successfully secure grant awards and meet program requirements.

New Jersey Department of Environmental Protection (NJDEP) Green Acres Program, Land & Water Conservation Fund, Outdoor Recreation Legacy Partnership (ORLP)

Timeline: approximately 15 months

Federal grant funding is available to eligible local governments to acquire land that will become parks, park facilities, or other rehabilitation of parkland in certain urban areas. Currently, there is \$150 million in ORLP grant funding available nationally; the minimum grant request is \$300,000 and capped at \$5 million. ORLP has a 50% match. Local governments are eligible to apply but must be in a designated urbanized area of more than 50,000 people per the 2010 US census and distressed communities with underserved parks.

Establish a Stormwater Utility (SWU)

SCE can guide local governments struggling with steady revenue source to address stormwater management with feasibility studies and creation of a stormwater utility. Through this vehicle, funds can be exclusively dedicated to the management of stormwater. The SWU assesses fees to operate, maintain, repair, and improve the system, providing funding stability for stormwater management. NJDEP and the Department of Consumer Affairs are responsible for receiving applications.

Justice40 Initiative

Through Executive Order 14008, January 2021, the Biden-Harris Administration committed 40% of relevant federal funding to disadvantaged communities. Funding targets communities that have been disproportionately impacted on their health, environment, economy, and climate. Communities can explore the CDC Social Vulnerability Index interactive map, which uses U.S. Census Data at the census tract level, to identify disadvantaged communities with high vulnerabilities under 15 social factors.

Transportation Alternatives Set-Aside Program (TA Set-Aside)

New Jersey Department of Transportation (NJDOT), in partnership with the North Jersey Transportation Planning Authority, the Delaware Valley Regional Planning Commission, and the South Jersey Transportation Planning Organization, administers the Transportation Alternatives Set-Aside Program (TA Set-Aside) to provide federal funds



DESCRIPTION OF SERVICES

PROJECT FUNDING EXPERTISE

for "non-traditional" surface transportation projects (land and water) on a reimbursement basis. Local governments, transportation authorities, and public agencies are eligible to apply for transportation projects that improve quality-of-life for the whole community and fall within seven (7) categories for eligibility:

1. Design and construction of on-road and off-road trail facilities
2. Conversion and use of abandoned railroad corridors
3. Construction of scenic turnouts, overlooks, and viewing areas
4. Historic preservation and rehabilitation of historic transportation facilities
5. Community improvement activities
6. Environmental mitigation (stormwater management)
7. Reduction of vehicle-caused wildlife mortality or restoration & maintenance of terrestrial/aquatic habitats

State Aid Programs - Transportation Trust Fund

Through the NJDOT's State Aid programs local governments can receive grant funds for a variety of transportation projects, particularly roadways. Below is a brief summary of each grant program:

1. Municipal Aid: All municipalities are eligible for projects that support walking and biking in their communities, such as pedestrian safety improvements, bikeways, and streetscapes.
2. Transit Village: Provides funds for traditional and non-traditional transportation projects that are within a half mile of the transit facility. Only designated New Jersey Transit Villages are eligible.
3. Bikeways: Funding for bicycle projects that create new Bike Path Mileage.
4. Safe Streets to Transit: Provides funding to construct safe and accessible pedestrian connections to transit facilities to encourage use of transit by the general population.

Federal Funding Programs

Timeline: 12 – 18 months

Federal Emergency Management Agency (FEMA) Hazard Mitigation Grant Program (HMGP)

FEMA's HMGP helps communities implement hazard mitigation measures following a Presidential major disaster declaration. The objective is to support cost-effective measures during recovery that will reduce the risk of physical and social impacts from future disasters. Through the New Jersey Office of Emergency Management (NJOEM) the FEMA Hazard Mitigation grants are available for local governments to fund their infrastructure projects. Total project costs are covered up to 75% for hazard mitigation projects with a varying cap subject to the sliding scale formula that FEMA provides for disaster recovery for each disaster declaration.

Building Resilient Infrastructure and Communities (BRIC)

Through FEMA and the U.S. Housing and Urban Development Department a variety of grants are available for local governments to fund their infrastructure projects. FEMA launched the BRIC grant to fund state and local hazard mitigation projects. A portion of the grant is through state allocation (state cap of \$2 million FY22) and a national competition (award of \$50 million sub applicant).

Community Development Block Grants (CDBG)

United States Department of Housing and Urban Development (HUD) has a variety of CDBGs that can be used to fund infrastructure projects, such as the CDBG-Disaster Relief grant. CDBGs are particularly helpful when trying to satisfy the required cost share of some funding programs' non-federal cost share.

Water Infrastructure Finance and Innovation Act (WIFIA)

WIFIA provides communities long-term, low-cost supplemental credit assistance for water and wastewater projects. Local governments, private corporations, and trusts and partnerships are eligible to apply. The program's flexible terms allow for loans to fund a variety of projects, subject to some requirements, and for repayment to be deferred for a maximum of five (5) years. WIFIA will cover up to 49% of total project costs and will cap project size at \$20 million.



DESCRIPTION OF SERVICES

ENVIRONMENTAL (LSRP)

The investigation of sites with **Environmental Impacts** requires skill and talent that SCE has acquired through years of experience working with Clients to develop the most cost effective path to environmental compliance. Whether coordinating with the New Jersey Department of Environmental Protection (NJDEP) Site Remediation Program and Solid Waste Management Program, the Division of Water Quality, Division of Land Use, or the Air Quality Permitting Program, a solid knowledge of the NJDEP Regulations is essential in moving projects forward to completion. SCE's environmental and engineering expertise in soil and groundwater remediation includes an abundance of in-situ and ex-situ technologies to custom fit the Client's needs. Our multitude of completed contracts has provided us with the knowledge to administrate the required procedures to comply with the policies needed on our Client's project sites.



SCE employs a team of Environmental Professionals with the knowledge and expertise to guide you through your due diligence investigation, brownfield redevelopment, real estate transaction, or remediation project. Knowing what you're buying is critical for advancing successful real estate transactions and redevelopment projects. Due diligence and proper investigation of environmental concerns are necessary to understand potential financial impacts and help protect yourself from unknown contamination that could be detrimental to your project. Let our **Licensed Site Remediation Professionals (LSRP)** and Permitting Specialists represent you for all your environmental consulting needs.

SCE's Environmental Professionals are experienced with a wide range of environmental services including, but not limited to, the below services:

- ASTM International Phase I/Phase II Environmental Assessment Reports (ESA)
- Underground UST and Spill Act Remediation
- ASTM Transaction Screening Assessment (TSA)
- All phases of investigation and reporting including Preliminary Assessment (PA), Site Investigation (SI), Remedial Investigation (RI), Remedial Action Workplans (RAW), and Remedial Action (RA)
- Permit-by-Rule Applications
- Institutional and Engineering Controls
- Remedial Action Permit (RAP) Applications
- Remedial Action Outcome (RAO)
- Alternative Remedy Proposals
- Vapor Mitigation
- Brownfield Redevelopment
- Linear Construction Oversight
- Hazardous Discharge Site Remediation Fund (HDSRF) Applications
- Industrial Site Recovery Act (ISRA) Compliance
- Sediment Sampling and Analysis Plan (SSAP)
- Environmental Impact Statement
- Remedial Technologies including Permeable Reactive Barriers (PRB), Bioremediation, Pump and Treat Containment System Systems, Excavation, Soil Vapor Extraction (SVE), Surfactant Injections, and Solidification
- Lead Inspection / Risk Assessment
- Asbestos Survey & Testing



DESCRIPTION OF SERVICES

ENVIRONMENTAL PERMITTING & REGULATORY COMPLIANCE



SCE's team of Environmental Scientists and Professionals are exceptionally qualified and experienced in providing Environmental Permitting and Consulting services, **allowing us to assist our Clients through every step of a project.** From pre-purchase site evaluation, into design, through construction and post-construction environmental monitoring, Federal, State, and Local Environmental requirements and approvals are a key component to the overall success of a project.

Our Environmental Professionals not only bring years of field experience but are continuously furthering their knowledge to ensure SCE is keeping up with the ever-changing environmental regulations and policies. This not only allows SCE to remain an industry pacesetter, we are able to ensure we are providing the best service to our Clients. **Federal, state, and local regulations** permeate through every type of project undertaken by SCE.

SCE has provided our Clients with assistance in the generation of strict contract documents that address all aspects of the regulatory industry. Prior to the implementation of any project, an evaluation of implications associated with agency jurisdiction is determined to establish a thorough project approach. This process ensures complete compliance with all federal, state and local regulations. To accomplish this task, a thorough knowledge of both the regulations involved and the process in which to ensure compliance with those regulations is key to a successfully complete project. **SCE has decades of experience** in dealing with the federal, state and local regulators and their ever-changing regulatory compliance bureaucracy.



Among the vast spectrum of agency regulations, SCE has vast experience in:

- Wetland Delineation and Mapping
- NJDEP Wetlands Letters of Interpretation (LOI)
- NJDEP Freshwater Wetlands Permitting
- NJDEP Flood Hazard Area Permitting
- NJDEP Waterfront Development Permitting
- NJDEP Coastal Wetlands Permitting
- NJDEP CAFRA Permitting
- Wetland and Riparian Zone Mitigation Design
- Federal U.S. Army Corps Section 404/10 Permitting
- Federal Clean Water Act Wetlands Jurisdictional Determination
- Regulatory & Transactional Support Services
- Highlands Approvals
- Municipal Environmental Impact Statements
- Site Feasibility & Constraints Reviews
- Entitlement Reviews



DESCRIPTION OF SERVICES

LAND SURVEYING

SCE's Land Surveying Department has decades of extensive experience completing various types of surveying projects. The Department consists of Professional Land Surveyors (PLS), Project Managers, Analysts, Technicians, and Support Personnel. The Project Team completes projects ranging in size from individual residential property surveys to large acreage boundary surveys, utilizing state-of-the-art surveying equipment including, but not limited to **Global Positioning System (GPS) receivers, robotic total stations, 3D LiDAR scanners, and Unmanned Aircraft System (UAS).**

SCE actively utilizes its advanced LiDAR scanning services as often as possible, which allows us to provide Clients with more innovative solutions on their projects. This technology enhances a multitude of services including creating topographical maps while generating accurate 3D models of each project site. This instrumentation is utilized on various types of projects including, but not limited to structural evaluation of buildings, proactive site settlement monitoring, as-built documentation, as well as for the design of complex draining systems for roadway, fields, and commercial site properties.



SCE has vast experience in the **maintenance and updates of municipal tax maps** including producing new maps to the current State Standards along with producing other official mapping needs of municipalities. Other land surveying services SCE provides to our municipal Clients includes numerous infrastructure projects for County and State Clientele. Prior to design and construction of these projects for the public sector, existing conditions are field surveyed as the project warrants, mapped and used as the basis for the project design. Research and analysis of record deeds and documents are critical for the proper establishment of boundary lines, right-of-way lines, and any restrictions/easements that may be of historical relevance. The utilization of our in-house survey capabilities assists in keeping our projects under budget and on time. SCE prides itself with providing full in-house services for the benefit of all our Clients.



Most recently, SCE has been offering our Clients Unmanned Aerial Vehicles (UAV) services, also referred to as Drone Technology. SCE embraces cutting edge technology and are dedicated to providing our Clients with the latest, most innovative technologies to use at their various project sites. Our team members are able to download and review collected data faster and more accurately which in return produces high quality deliverables guaranteed to increase efficiency on our Clients' projects. Additionally, our team possesses the required licensing and certifications necessary to operate our drone equipment, securing our Clients' safety at their sites.

DESCRIPTION OF SERVICES

GEOGRAPHIC INFORMATION SYSTEMS (GIS)

SCE is a leader providing **Geographic Information Systems (GIS)** services and solutions to support various disciplines including local government, water, wastewater, gas, and electric utilities across the United States. We provide **highly innovative customized mapping solutions** ranging from field data collection, web maps and apps, complete data management programs, GIS training, and more.

SCE is proud to be a **Silver Esri Business Partner**, using the latest in technology resources, hardware, and software to ensure our Clients get the best and most efficient product and services. SCE's standard is to deliver GIS Services and Solutions that are **affordable, integrated, functional, and user friendly**.



GIS Services we offer include:

- Database Development & Management
- GIS Field Data Collection
- Mobile App Development
- Project Management Dashboards
- GPS/GNSS Data Collection
- Data Modeling
- Data Conversion & Integration
- 3D Modeling - Lidar/Photogrammetry
- Web Mapping Application Development & Hosting
- Enterprise GIS Implementation, Management, and Consulting
- On-site GIS & GNSS Training and Consulting

GIS-based Solutions include:

- Asset/Facility Inspection, Inventory, and Management
- Real-Time As-Built Data Collection & Database Integration
- Field Data Collection Operation Management
- Web Mapping Application Development & Reporting
- Cartographic Map Production & Support
- Digital Inspection & Reporting

We use the **ArcGIS Enterprise and ArcGIS Online** suite of software, desktop analysis with ArcGIS Pro and ArcMap, custom web app development, and mobile GIS app configuration and implementation with Field Maps, Collector, Survey123, Dashboards, and data sharing and collaboration with ArcGIS Hub. Additional integrated platforms include Trimble, Eos NearMap, SQL Server, and Azure. We work closely with SCE's Land Survey Department to provide field services such as Unmanned Aerial Vehicle (UAV), photogrammetry, and 3D LiDAR Scanning.

SCE's technological infrastructure, staff knowledge and experience base, coupled with continuous technology training ensures that we will continue to provide our Clients with an exceptional level of GIS services and solutions.



DESCRIPTION OF SERVICES

CONSTRUCTION ADMINISTRATION & OBSERVATION

SCE has a Construction Administration and Observation Department comprised of **OSHA certified Technicians and Inspectors** who are trained in various disciplines including engineering, surveying, and landscape architecture. Our professionals are responsible for overseeing projects from pre-construction through project close-out. Our team includes **NICET certified Observers** with significant on the job training to handle any type of environment. We understand what is required on jobs sites including preparing daily inspection reports, adhering to project schedules, and ensuring Contractors are completing work in accordance with all plans and specifications for the projects.

Our Project Team members are highly experienced professionals with a proven track record in delivering services to a wide range of Clients on accelerated timelines, **ensuring projects stay within budget and meet established deadlines**. SCE has a large Construction Administration and Observation Department consisting of Technicians, Observers, and Safety Coordinators who are local to the area and can provide daily construction observation and oversight. Our team members are prepared to conduct regular site visits at each project location in preparation for monthly progress meetings. These monthly meetings will be coordinated and hosted by SCE on-site with project stakeholders.



The SCE Team is very experienced in providing construction administration and observation services for all types of projects including, but not limited to, roadway realignment projects including all phases of Municipal Engineering, preparation of bid documents (plans and specifications), field surveys and investigations, review of existing construction plans and inspection reports, utility coordination, and staged construction with traffic controls and/or detours.

SCE understands the potential construction constraints and will ensure that the Contractor will maintain schedule, safety measures, and adhere to the specifications during construction. Our team members are trained and excel in tracking project progress, including project budgets. Project oversight services include:

- Monitoring project budgets to ensure that all projects expend funds in accordance with all local, county, and federal policies and regulations.
- Maintaining records and documentation as required for federally funded projects.
- Closing out construction projects in accordance with federal requirements.
- Providing documentation that the project has been completed in reasonably close conformity with approved plans and specs including authorized changes and extra work including time extensions.
- Providing a basis for acceptance and reimbursement of project costs with federal funds.
- Acquiring information on construction changes.
- Providing documentation of solutions to problems or commitments.
- Offering technical and procedural advice.
- Recommending improved construction techniques and engineering supervision.
- Communicating with project staff.
- Monitoring and evaluating progress of work.
- Following up on previous inspection findings.



DESCRIPTION OF SERVICES

ADDITIONAL CONSIDERATIONS

To provide our Clients **quality, cost-effective services**, SCE has and will continue to invest in state-of-the-art computers, engineering, and surveying equipment. SCE always maintains industry standard software and technology to provide our Clients with optimal services on a daily basis. SCE offers both **highly revolutionary and conventional state-of-the-art technology** and continues to maintain today's latest industry standard technology. Providing our Clients with the best economical and environmentally efficient services is highly valued at SCE. SCE has a fleet of vehicles which are utilized by our staff members for on-site project related services including data collection, meetings, deliveries and inspection making it easy to respond to Client project requests. Our vehicles are also properly stocked with necessary safety equipment, emergency kits, personal protective equipment and other related equipment / technologies. Each employee understands that it is their responsibility to enforce all safety regulations in each of their projects. Additionally, our Principals and Managers are responsible for regularly ensuring and enforcing these safety regulations with all staff members.



In order to maintain accurate project budgeting and scheduling, SCE utilizes a **Program Financial Management Software** as our internal project management software. All projects are created, monitored, and controlled using this software which affords a wide range of management tools to all levels of project staff. Aspects of the Program Management System include initial project creation using proposal information, project work breakdown structure development including resource assignments, actual staff assignments, budget creation, scheduling, and invoicing. Project staff of all levels enter and track their time against the several contracts established for each phase of the project, with instant alerts to the Project Manager upon certain pre-established milestones in the project schedule. Reports are produced and updated daily/weekly/monthly allowing Managers to know exactly where the project completion is relative to the planned project budget and schedule. This immediate tracking enables the Manager to adjust resources if necessary and notify **Client instantaneously**, to ensure timely completion. With the use of this technology, SCE projects run smoothly from start to finish and all staff members are fully aware of their individual project responsibilities and corresponding budgets to complete designated tasks.



4

KEY STAFF RÉSUMÉS

4



SCE STAFF OVERVIEW

REQUEST FOR PROPOSALS PROFESSIONAL SERVICES #02 ENGINEERING SERVICES – SOLID WASTE

Shareholders/Principals

SUBURBAN CONSULTING ENGINEERS, INC. (SCE) is a national firm with office Headquarters located in New Jersey and is a closely held Sub-Chapter S Corporation in its 38th year of business. It's Shareholders (owners) and Principals of the firm are Reyna M. Burger, Daren J. Phil, Erin B. Abline, Leann E. Fetcho, Kevin P. Campbell, Joseph D. Phil, Michael K. McAloon, and Joseph D. Perello.

Corporate Officers

The Corporate Officers include the President, Vice Presidents, Secretary, Treasurer and Assistant Secretaries. The corporate officers are Reyna M. Burger - President & Corporate Secretary, Brian K. Strout - Executive Vice President, Daren J. Phil - Vice President, Diana L. Coker - Vice President & Treasurer, Joseph D. Perello - Vice President, Joseph D. Phil - Assistant Corporate Secretary, Kevin P. Campbell - Assistant Corporate Secretary, Erin B. Abline - Assistant Corporate Secretary, Leann E. Fetcho - Assistant Corporate Secretary, Michael K. McAloon - Assistant Corporate Secretary, and Matthew J. Beksel - Assistant Corporate Secretary.

The Process/Department Managers

President, Reyna M. Burger, and Executive Vice President, Brian K. Strout, PE, oversee all Departments at the company. Each department has a manager in charge of that department's administration and assists with coordinating their department's efforts with the rest of the company in the successful efficient delivery of services to our Clients.

LICENSED STAFF LISTING									
PE	PLS	LLA	PP	CME	CPWM	LSRP	CFM	LEED	GISP
27	2	3	4	6	2	3	3	2	3
NAME		TITLE		DEPARTMENT		STAFF			
Reyna M. Burger		President		Executive		6			
Diana L. Coker		Vice President		Accounting		4			
Nancy Deighan		Department Manager		Administration		4			
Christopher F. Dutz		Department Manager		CAO		13			
Eleni Giannikopoulos		Department Manager		Client Development		4			
Michelle A. Herishko, LSRP		Department Manager		Environmental		6			
Matthew J. Beksel, PE		Department Manager		Gas Utility		38			
Marc E. Sheridan		Department Manager		Georgia Gas GIS		10			
Michael T. Kolody, GISP		Department Manager		GIS		10			
Kristen N. Frisch, SHRM-SCP		Human Resources Manager		Human Resources		3			
Jesse Pote		IT Manager		Information Technology		6			
Joseph D. Phil, PLS, PP, CFS		Department Manager		Land Survey		6			
Robert C. Gregoria, PE, LEED GA		Branch Manager		Landscape Architecture		8			
Leann E. Fetcho		Department Manager		Marketing/Proposals		8			
Erin B. Abline, PE, CME, CFM, CPWM		Department Manager		Municipal & Land Development		18			
Matthew S. Popin, PWS		Permitting Manager		Permitting		3			
Michael K. McAloon, PE, Assoc. DBIA		Department Manager		Water/Wastewater		22			
TOTAL NUMBER OF PERSONNEL						169			





REYNA M. BURGER

PRESIDENT

BILLING TITLE: Principal/Project Officer

EDUCATION

Bachelor of Science, Engineering Arts
College of Engineering,
Michigan State University, MI, 2001

Minor in Supply Chain Management

CERTIFICATIONS

Land Use Board Secretary Certification

Ms. Reyna M. Burger joined **SUBURBAN CONSULTING ENGINEERS, INC.** (SCE) in October 2004 and is SCE's President. She is responsible for all of SCE's daily operations. Ms. Burger is part of the SCE Leadership Team that ensures daily business plans and company procedures are successfully maintained and functioning, which allows SCE to meet our Client's unique project expectations.

Ms. Burger is responsible to plan, direct, and coordinate the day-to-day operations of SCE through continued implementation and improvement of the operational systems, processes and policies in support of SCE's mission statement and core values. Ms. Burger supports enhanced management reporting, information transfer, business process, and organizational planning. Ms. Burger is responsible for the effective methods and strategies to ensure and improve the performance, productivity, efficiency, risk management, and profitability of SCE.

Ms. Burger administratively directs, supervises, and monitors all employees of SCE in the following areas:

- **Production** – Coordinate and supervise the efficiency and effectiveness of all Department Managers with regard to production process, scheduling, and project budgets. Monitor performance and implement improvements. Ensure quality of work through implementation of established strategies.
- **Financial** – Review financial statements and data. Prepare and control operational budgets. Utilize financial data to plan effective strategies for the financial wellbeing of SCE.
- **Best Practices** – Improve processes, workflows, and policies in support of SCE's organizational goals. Formulate and implement departmental and organizational policies and procedures, and monitor adherence of employees.
- **Strategic Input** – Member of top management/Board of Directors. Assist in the development of strategic plans for operational activity including preparation of annual business plan. Implement and manage operational improvements to achieve corporate goals.
- **Human Resources** – Plan the use of human resources. Organize recruitment and placement of required staff. Establish organizational structure. Participate in the monitoring and evaluation of the performance of all staff.
- **Administration** – Monitor, manage and improve the efficiency of support services such as IT, Marketing, and Finance. Facilitate coordination and communication among support functions and production.





BRIAN K. STROUT PE

VICE PRESIDENT

BILLING TITLE: Senior Project Manager

Mr. Brian K. Strout joined **SUBURBAN CONSULTING ENGINEERS, INC.** (SCE) in August 2018 and currently serves as Vice President of Operations. Mr. Strout brings over 30 years of experience in various technical, project control, and operational roles providing critical leadership and guidance in support of the SCE's continued growth. Mr. Strout works directly alongside SCE's President and Chief Operations Officer to ensure the successful development, implementation, and maintenance of companywide policies and procedures supporting SCE's Mission Statement and Core Values.

As a key member of the office leadership team, Mr. Strout is responsible for facilitating effective methods and strategies to ensure and improve the organizational structure, performance, productivity, efficiency, risk management, and profitability of SCE. Day-to-day, Mr. Strout directs, supervises, and monitors all employees of SCE with respect to the successful coordination of the following elements related to delivering business and operations to our network of Clients:

EDUCATION

Master of Science,
Engineering Management
New Jersey Institute of Technology,
NJ, 2004

Bachelor of Science, Civil Engineering
University of Rhode Island, RI, 1989

LICENSES/REGISTRATIONS

Professional Engineer (PE)

- New Jersey
- New York
- Pennsylvania

ASCE GRADE

VIII

- **Project Delivery:** Coordinate and supervise the efficiency and effectiveness of all Department and Project Managers with regard to project process, production, scheduling, budgeting, resource planning, and staffing. Work with Department Managers in the coordination and oversight of operational processes to ensure operations and staffing remain scalable and nimble during continued growth. Ensure quality of work through implementation of established methods and strategies.
- **Financial:** Support the preparation and control of annual operating budgets. Utilize financial data and financial modeling to plan effective profit strategies and market assessments for the financial wellbeing of the company.
- **Best Practices:** Improve processes and workflows in support of SCE's organizational goals. Formulate, implement, and monitor departmental and organizational policies and procedures.
- **Strategic Input:** Assist in the development of strategic plans for operational activity including preparation of annual business plan. Implement and manage operational improvements to achieve corporate goals.
- **Human Resources:** Establish organizational structure positioning SCE for continued growth. Develop and oversee SCE's budgeted hiring plan and ensure it is in sync with labor, revenue projections, and strategic plans. Coordinate with HR, Branch Managers, and Department Managers for recruitment and placement of required staff. Participate in the evaluation of the performance of staff.
- **Administration:** Monitor, manage, and improve the efficiency of administration support services including IT, Marketing, and Finance. Foster leadership communication and coordination with support functions, management, and production.





MICHAEL K. MCALOON PE, ASSOC. DBIA

PRINCIPAL / WATER/WASTEWATER DEPARTMENT MANAGER

BILLING TITLE: Principal/Project Officer

EDUCATION

Bachelor of Science, Environmental Engineering, Wilkes University, PA, 2010

LICENSES/REGISTRATIONS/CERTIFICATIONS

Professional Engineer (PE)

- Connecticut
- Delaware
- Florida
- Georgia
- Illinois
- Maryland
- Massachusetts
- New Jersey
- North Carolina
- Pennsylvania
- Rhode Island
- Tennessee
- Virginia
- Washington
- West Virginia

Associate Design-Build Professional (Assoc. DBIA)

C2 Collection System Operator

- New Jersey

T3 Treatment System Operator

- New Jersey

W3 Water Distribution System

- New Jersey

Water & Wastewater Treatment System Operator

- Pennsylvania

NACE Coating Inspector Level 1 – Certified

Permit-Required Confined Space Training

ASCE GRADE

VI

PROFESSIONAL AFFILIATIONS

American Water Works Association

New Jersey Water Association

New Jersey Water Environment Association

Association of Environmental Authority

NACE International Membership

Mr. Michael K. McAloon is the Water/Wastewater Department Manager at **SUBURBAN CONSULTING ENGINEERS, INC.** (SCE). He joined SCE in January 2014 and has extensive experience in the discipline of utility infrastructure and design projects that include sanitary sewer collections and treatment, water distribution and treatment, and gas utility transmission and distribution. He leads his team of engineers to provide outstanding, award-winning design solutions on various projects.

Mr. McAloon is experienced and skilled in a variety of environmental and engineering related services, and is currently assisting several public and private sector Clients on utility infrastructure related projects. Mr. McAloon is responsible for several Clients at the firm, where he provides professional expertise and knowledge on all relevant subjects. He is a key member in ensuring projects maintain their required schedules and is an excellent communicator with staff members and Clients.

Mr. McAloon has provided professional services to the Morris County Municipal Utilities Authority (MCMUA) since 2015 and currently is intimately involved with the operations of the MCMUA where SCE serves as Consulting Engineer. Additionally, Mr. McAloon has overseen the design and rehabilitation on several of the recent water storage tank rehabilitation projects where he utilizes his NACE Coatings Inspection training.

Mr. McAloon has provided professional services to the City of Hackensack where he currently serves as the Licensed Operator for the Combined Sewer Collection System.

Mr. McAloon continues to demonstrate his specialized capabilities in the industry, while leading the Water and Wastewater Department in developing solutions to our Clients' needs, proving his significance as a member of the SCE Design Team.

Additionally, Mr. McAloon has or currently is providing services for the following engineering related projects:

Water Storage Tank Rehabilitation

- Perth Amboy – Runyon Treatment Plant Backwash Tank and Albert Street Standpipe Rehabilitation Project
- Trenton – Mercerville Tank Improvements Project
- MCMUA – Mt. Arlington Water Storage Tank Rehabilitation Project

Water Infrastructure Improvements

- Ramapo (NY) – PFAS Compliance (Project D) – Design/Build Project Delivery
- MCMUA – Consulting Engineer – Water Division
- MCMUA – Mt. Arlington Pump Station Rehabilitation
- Picatinny Arsenal – Potable Water Storage Tank Inspection

Wastewater Infrastructure Improvements

- Hackensack – Voorhis Lane Pump Station Rehabilitation
- Clinton (Twp) – Glen Meadows Wastewater Treatment Facility
- Secaucus – Meadowview Sewerage Treatment Plant
- Bernards Township Sewerage Authority – I&I Investigation and System Rehabilitation Program

Mr. McAloon continues to demonstrate his specialized capabilities in the industry, while leading the Water and Wastewater Department in developing solutions to our Clients' needs, proving his significance as a member of the SCE Design Team.





DAVID J. APPLGATE PE, CME, W3, T3

SENIOR TECHNICAL MANAGER

BILLING TITLE: Principal/Project Officer

EDUCATION

Bachelor of Science, Civil Engineering,
Rutgers University, NJ, 1985

LICENSES/REGISTRATIONS

Professional Engineer (PE)

- Delaware
- Maryland
- New Jersey
- New York
- Pennsylvania

Certified Municipal Engineer (CME)

- New Jersey

T3 Treatment System Operator

- New Jersey

W3 Water Distribution System

- New Jersey

ASCE GRADE

VII

PROFESSIONAL AFFILIATIONS

American Water Works Association

New Jersey Water Association

New Jersey Water Environment
Association

Water Environmental Federation

South Jersey Water Professionals

Association, 1st Vice President

Mr. David J. Applegate joined **SUBURBAN CONSULTING ENGINEERS, INC.** (SCE) in February 2024 as a Senior Technical Manager in the Water/Wastewater Department. Mr. Applegate has over 35 years of experience in the field of water resources engineering, with a focus on the design, construction, and operation of potable water and wastewater treatment plants, sanitary sewage pump stations, and potable water and sanitary sewer storage and conveyance systems.

Mr. Applegate has served as the Engineer of Record for various municipal utilities authorities throughout the State of New Jersey and has provided forensic engineering and expert witness testimony for select water resources litigation. He has extensive knowledge of New Jersey Regulations and permitting requirements both at the local and State level.

Additionally, Mr. Applegate was responsible for managing a design-build water resources construction division where he oversaw division-wide engineering personnel, field operations, project scheduling/planning, proposal preparation, and provided QA/QC review of work products. He is highly skilled in marketing and business development, managing complex contract negotiations, and providing economical and innovative project solutions for Clients.

At SCE, Mr. Applegate is providing project management and technical oversight services on a variety of water resources capital improvement projects for private, public, and municipal Clients. These projects include water main installations, production well facilities improvements, sanitary sewer system studies, water storage tanks improvements, water/sewer treatment improvements, and pump station upgrades.

Mr. Applegate strives to anticipate Client and project needs, and maintains continuous collaboration with the project team and stakeholders to deliver successful, value added projects.





ELENI GIANNIKOPOULOS

SENIOR ASSOCIATE / CLIENT DEVELOPMENT DEPARTMENT MANAGER

BILLING TITLE: Senior Project Manager

EDUCATION

Bachelor of Science, Civil Engineering
Drexel University, PA, 2000

ASCE GRADE

III

PROFESSIONAL AFFILIATIONS

- Member of Technical Advisory Committee – NJTIB
- New Jersey American Water Works Association – Membership Committee
- New Jersey Water Environment Association
- New Jersey Association of Environmental Authorities
- New Jersey Water Association
- Consultant for NJ State Department of Labor – Instructor/ Lecturer – Diverse Topics

PRESENTATIONS

- NJWEA & AWWA NJ, "Navigating the SRF", March 2023/May 2023
- AEA Annual Meeting, "Bigger Pot of Gold at the End of the SRF Rainbow", November 2022
- NJWEA, "Like a Bridge Over Troubled Stormwater", May 2022
- New Jersey Association of Environmental Authorities, "Navigating the SRF", March 2022
- NJSME, "Navigating through the NJEIFP & SRF" and "Green Infrastructure", March 2021
- New Jersey Redevelopment Forum, "Smooth Sailing or Choppy Waters", March 2020

Ms. Eleni Giannikopoulos is the Client Development Department Manager at **SUBURBAN CONSULTING ENGINEERS, INC.** (SCE), and has over 20 years of experience working as an engineering consultant in the States of Pennsylvania and New Jersey. Ms. Giannikopoulos joined SCE in May 2013 and brings an exemplary history of professional work experience in the fields of research and development, environmental, water and wastewater engineering, and project management to the firm. At SCE, Ms. Giannikopoulos' Client Development responsibilities include consulting on appropriate funding avenues for Drinking Water, Wastewater, Stormwater, and Combined Sewer System Client projects, where she contributes her State and Local Funding project coordination expertise tailored to each Client's needs.

Ms. Giannikopoulos' responsibilities involve continuous interaction and communication with Clients, discussing Capital Improvement needs, proper project planning, and due diligence for project funding pre-qualifications and budgeting. As a primary Client contact, she works closely with Administration, Chief Financial Officers, Bond Counsel, and Client project management teams to discuss project milestones, tracking of project budgeting, and scheduling from concept planning through construction completion stages of a project.

Ms. Giannikopoulos works closely with public regulatory agencies to ensure smooth and expeditious results, while securing state funding through the New Jersey Infrastructure Bank (NJIB) and New Jersey Transportation Infrastructure Bank (NJTIB). Her expertise involves large projects seeking State and Federal Funding and Permitting, and coordinates task leaders of multiple disciplines to develop a successfully integrated project. Ms. Giannikopoulos has demonstrated exceptional written and verbal communication skills in-house and with Clients, which assist her to guide project teams to rapid and precise project deliverables.

Ms. Giannikopoulos's Client portfolio, serving in the capacity of Client Manager role, at SCE includes but is not limited to the following:

- City of Hackensack - NJIB & NJTIB Project Assistance
- Town of Clinton - General Water Consulting
- Township of Montclair - General Utility Consulting
- Borough of Glen Ridge - General Utility Engineering
- Brick MUA - Water and Sewer Consulting
- Town of Boonton - NJWB Project Assistance
- Borough of Seaside Heights - NJWB Project Assistance
- Town of Newton - NJWB Project Assistance
- Borough of Netcong - NJWB Project Assistance
- City of Camden - Stormwater Utility Feasibility Studies
- Cumberland County Utilities Authority - NJWB Project Assistance

Ms. Giannikopoulos is a significant asset to the SCE project team and continues to excel in all sectors of her field. She challenges herself on each unique project and provides innovative design solutions while maintaining proficient Client communication and responsive relationships.





DAVID A. CHANDA PE, CME

ASSOCIATE / SENIOR PROJECT MANAGER

BILLING TITLE: Senior Project Manager

Mr. David A. Chanda joined **SUBURBAN CONSULTING ENGINEERS, INC.** (SCE) in July 2015 and has extensive experience in the engineering industry. Mr. Chanda is responsible for utility design and permitting for the Water/Wastewater Department, managing and directing junior designers, and has an excellent understanding of relevant New Jersey Regulations and permitting requirements both at the local and State level.

Mr. Chanda has considerable regulatory experience and started his career as an environmental engineer responsible for the Technical Review of construction projects for Public Community Water Systems (PCWs) in both Atlantic and Burlington County. These projects included water main extension/replacements, potable well installations, booster pump stations, chemical feed injections, treatment plant installation/modifications, and master permit detailing for large PCWs. The technical and regulatory information garnered from reviewing and developing construction permits is applied during the design and implementation of all improvement projects for both our municipal and private PCWs. Mr. Chanda possesses skills in leadership through his experience with guiding a lab certified Well Test Team with testing water quality for public community wells for potable use for all primary and secondary standards under the Federal and New Jersey Safe Drinking Water Program.

Mr. Chanda assists SCE's Water/Wastewater Department on a variety of projects for private, public, and municipal Clients including water main installation, production well facilities improvement projects, sanitary sewer system studies, environmental site studies, water storage tanks improvements, water/sewer treatment improvements, and pump stations upgrades. Mr. Chanda has worked on Corrosion Control Treatment Recommendation Reports and full scale Demonstration Studies, PFAS Treatment Evaluation Reports, Asset Management Plans, Emergency Response Plans, Lead and Copper Plans, Water Quality Parameter Plans, Revised Total Coliform Sampling Plans, Public Supply Improvement Plans, Cyber Security Programs, and NJDEP permitting for SCE's municipal and private Clients.

Mr. Chanda has or is currently providing services on the following projects:

- Private Water Utility – PFAS Treatment Design, Removal by Ion Exchange
- Boonton Water Department – pH Adjustment – Surface Water TP Trial Study, PFOA Treatment, and Sampling Study
- Brick Township Municipal Utilities Authority – Water and Sewer Main Replacement Project, Fire Hydrant Replacement Project, and HDD Water Main Improvements
- Clinton Water Department – Wells No. 4 and 7 WTP Improvements, Hydraulic Modeling, and Micro Water Loss and Leak Detection Program
- Dover Water Department – Public Supply Improvement Plan
- New Jersey American Water – Chlorine Contact Time Permit to Construct
- Parsippany-Troy Hills Water Department – Well 1A Replacement & Well 21 Replacement
- Private Water Utility – Passaic and Sussex County CCT Designs, Lambertville CCT Demonstration Study, and Windsor Avenue WTP Improvement Project

Mr. Chanda is an instrumental asset to the SCE Team and continues to diligently work with Principals and other Managers at the firm to meet and exceed all project requirements and deliverables. Mr. Chanda is a State of New Jersey Licensed Professional Engineer (PE) and Certified Municipal Engineer (CME).

EDUCATION

Bachelor of Science,
Bioenvironmental Engineering,
Rutgers University, NJ, 2011

LICENSES/REGISTRATIONS

Professional Engineer (PE)

- New Jersey

Certified Municipal Engineer (CME)

- New Jersey

ASCE GRADE

VI

PROFESSIONAL AFFILIATIONS

Rutgers Engineering Society
American Water Works Association
North Jersey Water Association
NJ Water Environment Association





JOSEPH M. LAKNER PE

SENIOR PROJECT MANAGER

BILLING TITLE: Senior Project Manager

EDUCATION

Master of Science, Civil Engineering,
Florida Atlantic University, FL, 2015

Bachelor of Science, Civil Engineering,
Florida Atlantic University, FL, 2014

LICENSES/CERTIFICATIONS

Professional Engineer (PE)

- New Jersey

Lateral Assessment Certification
Program (LACP)

Manhole Assessment Certification
Program (MACP)

Pipeline Assessment Certification
Program (PACP)

ASCE GRADE

V

PROFESSIONAL AFFILIATIONS

American Society of Civil Engineers

PUBLICATIONS

Author, "Futuristic On-Site Leachate Management," World Environmental and Water Resources Congress, May 2016

Co-Author, "Capital Improvement Program Forecasting to Analytically Target Distressed Infrastructure," Florida Water Resources Journal, December 2018

Mr. Joseph M. Lakner, PE, joined **SUBURBAN CONSULTING ENGINEERS, INC.** in January 2022 and is currently a Senior Project Manager in the Water/Wastewater Department. Mr. Lakner earned his Master of Science in Civil Engineering and Bachelor of Science in Civil Engineering from the Florida Atlantic University. Mr. Lakner has over ten (10) years of professional experience.

Over his professional career, Mr. Lakner has been actively involved in Environmental and Civil Engineering and has completed a variety of water, wastewater, and environmental projects throughout the State of New Jersey. As an Environmental Engineer, Mr. Lakner was responsible for completing project design and permitting for corrosion control chemical treatment systems, lead service line replacements, sanitary sewer and manhole rehabilitation, chemical injection systems, lime softening residual processing systems, and stormwater pumping stations. He also has experience in designing switchgear upgrades, generator replacements, clarifiers, and pure oxygen generation plants. Further, Mr. Lakner is skilled in developing project plans and specifications, managing Client budgets, and overseeing project construction.

At SCE Mr. Lakner is assisting SCE's water/wastewater department on a variety of projects for private, public, and municipal Clients, including water main installations, production well facilities improvement projects, sanitary sewer system studies, environmental site studies, water storage tanks improvements, water/sewer treatment improvements, and pump stations upgrades.

Mr. Lakner has or is currently providing professional services on the following projects:

- Trenton - Mercerville Tank Improvements - Review, Design, & Construction Administration
- Montville - Forest Park Pump Station - Engineering Design
- Bernards - Fieldstone Force Main - Engineering Design
- Bernards - Infiltration & Inflow Implementation
- Lebanon - Bunnvale Water System Transmission Main
- Washington - Springtown Wastewater Pump Station
- Sussex - Upper Walkkill Wastewater Treatment Plant Feasibility Study

Mr. Lakner is an asset to the SCE Water/Wastewater Department and strives to provide Clients with exceptional services and innovative solutions.





JOHN M. CHAYKO PE, CFM

SENIOR PROJECT MANAGER

BILLING TITLE: Senior Project Manager

EDUCATION

Bachelor of Science, Civil Engineering,
New Jersey Institute of Technology, NJ,
1987

LICENSES

Professional Engineer (PE)

- New Jersey

Certified Floodplain Manager (CFM)

- New Jersey

REGISTRATIONS/CERTIFICATIONS

- OSHA 40-Hour – HAZWOPER Training
- Society of Asphalt and Paving Technologists Certification
- MS4 Stormwater Qualified Inspector – American Stormwater Institute, LLC.
- NJ Transit Roadway Worker Protection Training

ASCE GRADE

VI

PROFESSIONAL AFFILIATIONS

New Jersey Association of Floodplain Managers

Association of State Floodplain Managers

Society of American Military Engineers

Mr. John M. Chayko is a Senior Project Manager in the Water/Wastewater Department at **SUBURBAN CONSULTING ENGINEERS, INC.** (SCE). He has over 35 years of experience providing engineering design, construction observation and administration, project management, staff supervision and evaluation, technical training, technical writing, and business development skills in both public and private sectors.

Over his professional career, Mr. Chayko expanded into various engineering specialties including highway and rail transportation, water resources, dams and flood control facilities, stormwater management and drainage systems, GIS based flood inundation mapping, septic and sanitary systems, private and public site/land development, utility engineering/relocations, right of way engineering, planning board expert testimony, and environmental permitting.

Mr. Chayko is knowledgeable and current in the guidelines and management of various federal, state, and local grant funding opportunities provided under FEMA, USDA/NRCC, NJDOT Municipal Aid, NJEIFP, NJDEP Open Space and Green Acres, Community Development Block Grants (CDBG), and County Open Space Programs. He has recently been instrumental in working alongside local officials in identifying and securing both FEMA and USDA/NRCC Grants for the City of Lambertville as a result of Tropical Storm Ida stream corridor and infrastructure damages.

As part of Mr. Chayko's responsibilities at SCE, he provides key services to several municipalities including managing major capital improvement construction contracts for the City of Hackensack including combined sewer overflow (CSO) sewer separation to support future redevelopment. His construction administration assistance for SCE includes both capital improvements and escrowed private development efforts and includes overseeing daily observation of storm and sanitary sewer infrastructure drainage systems, curbing, milling and paving, ADA sidewalk ramps, and monthly contractor pay recommendations.

Mr. Chayko is well-versed in the field of civil engineering and provides a high-level of attention to his Client's needs to ensure they receive exceptional service on their projects. He possesses excellent communication, collaboration, and problem-solving skills, and excels in providing exceptional Client relationship management and serves as a civil engineering advisor to management.





ANNA F. SANTINO PE

PROJECT MANAGER

BILLING TITLE: Project Manager

EDUCATION

Bachelor of Science, Civil Engineering,
Ohio Northern University, OH, 2010

LICENSES/CERTIFICATIONS

Professional Engineer (PE)

- New Jersey
- Maryland
- Rhode Island

OSHA 10

First Aid CPR AED Certified

ASCE GRADE

V

PROFESSIONAL AFFILIATIONS

American Water Works Association

- NJ AWWA Membership Committee
Chair

Water Environment Federation

Her2O

- Founding Member

Ms. Anna F. Santino, PE joined **SUBURBAN CONSULTING ENGINEERS, INC.** (SCE) in July 2023 as a Project Manager in the Water/Wastewater Department and has over thirteen (13) years of professional civil engineering experience focused on condition assessment and asset management of critical buried infrastructure projects.

Over her professional career, Ms. Santino has provided multi-year program management services; established an asset management program for a large utility with the primary role of developing and executing condition assessment projects for buried water and wastewater infrastructure; and managed engineering analysis for pressurized water and wastewater pipelines while ensuring alignment with her Client's needs and level of service. She also has experience providing geotechnical design and construction management of combined sewer overflow (CSO) tunnels and sanitary sewer infiltration/inflow remediation studies.

Ms. Santino strives to anticipate Client and project needs, and maintains continuous collaboration with the project team and stakeholders to deliver successful and value added projects.

Ms. Santino is assisting SCE's water/wastewater department on a variety of projects for private, public, and municipal Clients, including water/sewer main design, production well facilities improvement projects, and treatment facility improvements.

Ms. Santino has or is currently providing professional services on the following projects at SCE:

- Private Water Utility Client - General Engineering Consulting, Water Meter Olympics Program, Water Main Prioritization Program
- Town of Clinton - Asset Management Plan, Well Treatment Improvements, Water Quality Accountability Act (WQAA) Compliance, Water Usage Analysis
- Private Utility Clients - Water and Sewer Main Replacement Projects, Wastewater Treatment Facility Upgrades

Ms. Santino is an asset to the SCE project team. She challenges herself on each project to provide Clients with exceptional services and innovative solutions.





HANNAH DELOS REYES PE

PROJECT ENGINEER

BILLING TITLE: Project Licensed Professional

EDUCATION

Bachelor of Science, Civil & Environmental Engineering, Rutgers University, NJ, 2017

Master of Science, Water Resources & Environmental Engineering, Rutgers University, NJ, 2020

CERTIFICATIONS

Professional Engineer (PE)

- New Jersey
- New York
- Pennsylvania
- Georgia

OSHA-10

PROFESSIONAL AFFILIATIONS

American Water Works Association

- AWWA NJ Young Professionals Committee Member

New Jersey Environment Association (NJWEA)

ASCE GRADE

IV

Ms. Hannah Delos Reyes joined **SUBURBAN CONSULTING ENGINEERS, INC.** (SCE) in February 2021 and currently serves the firm as a Project Engineer in the Water/Wastewater Department. Ms. Delos Reyes is working closely with Project Managers, other Engineers, and Designers to enhance services to the firm's water and wastewater Clients.

Ms. Delos Reyes has significant experience involving engineering design of water, wastewater, and water reuse projects including treatment plants, pump stations, collection systems, and distribution systems. She is highly proficient in preparing design drawings, engineering reports, technical specifications, permit applications, as well as feasibility studies. Additionally, Ms. Delos Reyes has experience with project site inspection and construction management for water and wastewater facilities. She provides project coordination between designers, vendors, contractors, and system operators.

Ms. Delos Reyes is currently providing technical services on the following projects:

- Township of Montville - Water & Sewer Consulting Services
- Passaic Valley Water Commission - Lodi Water Main Design
- Township of Hamilton - PFAS Treatment Improvements
- Washington Township Municipal Utilities Authority - PFAS Treatment Improvements

Ms. Delos Reyes is proficient with many engineering computer programs including Revit, Navisworks, Arc Geographic Information Systems (GIS), AutoCAD Civil 3D, and Microsoft Office.

Ms. Delos Reyes is working diligently with Project Managers and other technical staff members to meet project deliverables and deadlines for the firm. She demonstrates excellence in her acquired knowledge within the industry and exemplifies excellent communication skills at the firm. She is dedicated to the Water/Wastewater industry as she continues to expand her knowledge in the field.





KRISTEN L. MEISNER

PROJECT COORDINATOR

BILLING TITLE: Project Coordinator

EDUCATION

Bachelor of Science, Environmental Engineering, University of New Hampshire, NH, 2009

REGISTRATIONS/CERTIFICATIONS

OSHA 40-hr HAZWOPER 29 CFR 10
OSHA 30-hr Construction Safety & Health
OSHA 8-hr Confined Space Certification
NYC DOB 4-hr Supported Scaffold User
NMTA NYC Transit Track Safety

ASCE GRADE

III

PROFESSIONAL AFFILIATIONS

American Society of Civil Engineers
Society of Women Engineers

RELATED COURSES

Water Chemistry
Pressurized Water Systems
Bioenvironmental Engineering
Sustainable Designs

Ms. Kristen L. Meisner joined **SUBURBAN CONSULTING ENGINEERS, INC.** (SCE) in March 2020 as a Project Coordinator in the Water/Wastewater Department. Ms. Meisner has extensive experience in various aspects of water and wastewater treatment facilities, permitting, collection systems, pump stations, and water storage tanks.

Ms. Meisner previously worked as an Environmental Engineer where she completed managerial oversight and technical design in all aspects of site assessment, development, and implementation of remedial strategies. She provides her expertise in soil, gas, groundwater remediation, preparation of cost estimates, remedial alternative selection and design, soil characterization for disposal, field safety oversight, and preparation of work plans and reports to satisfy state requirements. Ms. Meisner has experience with all site-related permitting in Water Treatment and Water and Sewer Operations as well as dewatering permitting requirements. She was previously employed in managerial positions working with major Clients including the New Jersey Department of Environmental Protection (NJDEP), Housing Authorities, and Transit Authorities to evaluate environmental compliance. She also worked with the U.S. Army Corps of Engineers to perform a comprehensive analysis of the watershed to establish existing conditions with the goal of developing a watershed plan to address flood control and environmental restoration problems. She has performed Phase I & II Environmental Site Assessments and has assisted in remedial engineering projects for multiple brownfield cleanup program sites.

At SCE, Ms. Meisner is working alongside her Department Manager, Principals, and Project Managers assisting Clients in both the public and private sectors. Ms. Meisner is currently working on several projects for the City of Hackensack. She provides innovative designs and proactive budget management. Ms. Meisner and her team offer quality process design services that encompasses water treatment, booster station upgrades, and water reuse irrigation systems in addition to asset management and NJIB funding analysis. Water treatment design includes the removal of the following contaminants of concern; uranium, iron and manganese, VOC, PFOA (perfluorooctanoic acid), PFNA (perfluoronanoic acid), and cryptosporidium. Design of booster station upgrades include complete system hydraulic analysis as well as pump selection and controls. Water reuse design includes utilizing existing retention ponds and nonportable wells to supply Client irrigation demands.

Ms. Meisner is a key member in ensuring projects maintain the required schedule for completion and maintains excellent communication with staff and Clients through projects completion.





WILLIAM A. SCHÜRMAN

PROJECT COORDINATOR

BILLING TITLE: Project Coordinator

Mr. William A. Schürmann joined **SUBURBAN CONSULTING ENGINEERS, INC.** (SCE) in June 2017 and is currently a Project Coordinator in the Water/Wastewater Department. He actively works on a variety of private, public, and governmental projects consisting of water/wastewater infrastructure design, municipal regulatory compliance, regulatory permitting, and construction administration.

Mr. Schürmann is experienced with AutoCAD drafting, WaterCAD drafting, ArcGIS, and affiliated design work with projects for the public and private entities for the initial design, construction, and final stages of a project. Mr. Schürmann has experience with various governmental permit applications, asset management planning, and associated technical reports, plans, and specifications. Additionally, he has completed various types of GIS data collection for various projects. Mr. Schürmann is proficient in the following programs: AutoCAD, WaterCAD, ArcGIS (Desktop), LabVIEW SolidWorks, and Matlab.

Mr. Schürmann is a valued asset to the Water/Wastewater Department where he is actively working on several water main and sewer main infrastructure improvements projects, along with the associated permitting requirements for each of the projects. Mr. Schürmann has performed on-site construction administration and observation services for the installation of several water main projects ranging in complexity including integrations from multiple governmental agencies on the same project. He also has performed tank inspections including Remote Operated Vehicle (ROV) operations for Water Storage Tanks. Additionally, Mr. Schürmann is working on obtaining regulatory compliances for Asset Management Planning, Lead and Copper Plan Compliance, Water Quality Compliance, Revised Total Coliform Rule Compliance, and additional regulatory compliance support.

Mr. Schürmann has or is currently providing services on the following projects :

- Private Water Utility Client – PFAS Treatment Design through Ion Exchange, Construction Oversight for DISC projects and Linear Water Main Design through the use of Horizontal Directional Drilling,
- Boonton Water Department – Surface Water TP pH Adjustment Trial Study, Green Street Tank Water Main Modifications, Asset Management Evaluation.
- Private Water Utility Client - Passaic and Sussex County CCT Designs and Chlorine Contact Time Improvement Designs, New York PFAS Compliance Design/Build Project, and Corrosion Control Demonstration Study
- Clinton Water Department - Linear Water Main Design/Permitting/Construction.
- Private Water Utility Client - Linear Water Main Design/Permitting/Construction, Chlorine Contact Time Improvement Permitting, and Tank Inspections (including ROV).
- Hampton Water Department - Asset Management Evaluation, and Regulatory Services.
- Dover Water Department - Public Supply Improvement Plans, Water Audits, and Regulatory Services.
- Brick Township Municipal Utilities Authority – Water and Sewer Main Replacement Project, Fire Hydrant Replacement Project
- Middlesex Water Company - Various Water Main Replacements
- Musconetcong – GIS Technician

EDUCATION

Bachelor of Engineering,
Environmental Engineering, Stevens
Institute of Technology, NJ, 2017

CERTIFICATIONS

OSHA 10-Hour Construction Course
Permit-Required Confined Space
Training

ASCE GRADE

III

PROFESSIONAL AFFILIATIONS

North Jersey Water Conference
New Jersey Utilities Authority
American Water Works Association
(AWWA) - New Jersey





JOSEPH CARACCIO EIT

PROJECT COORDINATOR

BILLING TITLE: Project Coordinator

Mr. Joseph Caraccio joined **SUBURBAN CONSULTING ENGINEERS, INC.** (SCE) in October 2023 and is currently a Project Coordinator in the Water/Wastewater Department. Mr. Caraccio is responsible for providing technical design services on a variety of projects for SCE's public, private, and governmental agency Clients.

Prior to joining SCE, Mr. Caraccio gained valuable experience as an electrical project manager overseeing the distribution and installation of large electrical systems for industrial, commercial, and institutional Clients throughout the five (5) Boroughs of New York City. He was responsible for performing 2D and 3D coordination and cost/risk analysis; creating shop drawings for field use including raceway routing, wiring method, and switchgear layout; performing value engineering services in accordance with National Electrical Code (NEC) and National Fire Protection Association (NFPA) code requirements; and managing all aspects of estimated jobs from notice-to-proceed to final completion including requests for information, change orders, as-built drawings, and closeout documentation.

At SCE, Mr. Caraccio performs electrical calculations, layout planning, code research, CAD drafting, and affiliated design work throughout the entire duration of a project including initial kick-off and project closeout. Specifically, Mr. Caraccio is designing distribution and treatment facilities including pump stations, as well as park and athletic field lighting and power arrangements. The design work he performs involves detailed analytical analysis of electrical power demand and usage in compliance with NEC requirements. Additionally, Mr. Caraccio develops technical specifications for projects, reviews submittals for Contractor work, produces various permit applications and asset management plans, and prepares drawings and visual aids.

Mr. Caraccio has or is currently providing services on the following projects:

- Montville - William Place Pump Station - Design, Bid, & Permitting Services
- Hamilton Township - Wells #11C, 12C, 13, 14C
- Essex Fells - Country Club PFOA Treatment - Design, Bid, & Permitting Services
- Bridgeton - CCUA - Generator Emergency Replacement
- Perth Amboy - Veteran Memorial Park - Athletic Field Upgrades

Mr. Caraccio is proficient with the following programs: Microsoft Office, AutoCAD, Navisworks, and Revit.

EDUCATION

Bachelor of Science, Mechanical Engineering, New Jersey Institute of Technology, NJ, 2020

Associate of Science, Engineering Science, Bergen Community College, NJ, 2017

CERTIFICATIONS

Engineer-In-Training (EIT)

- New Jersey
- OSHA 30

ASCE GRADE

III

PROFESSIONAL AFFILIATIONS

IEEE Association Member





RANDOLPH R. ROOF, JR. EIT

SENIOR DESIGNER

BILLING TITLE: Senior Designer / Senior Survey Analyst

EDUCATION

Bachelor of Science, Mechanical Engineering, New Jersey Institute of Technology, NJ, 2019

Associates Degree, Engineering Science
County College of Morris, NJ, 2017

CERTIFICATIONS

Engineer-In-Training (EIT)

- New Jersey
OSHA 10

ASCE GRADE

III

Mr. Randolph R. Roof Jr. joined **SUBURBAN CONSULTING ENGINEERS, INC.** (SCE) in April 2021 and is currently a Senior Designer in the Water/Wastewater Department. Mr. Roof is responsible for providing technical design services on a variety of projects for SCE's public, private, and governmental agency Clients.

Mr. Roof performs CAD drafting and affiliated design work throughout the entire duration of a project including initial kick-off and project closeout. Specifically, Mr. Roof is designing distribution and treatment facilities including Pump Stations, Treatment Facilities, and Water Tank Improvement projects. The design work he performs involves detailed analytical analysis of hydraulics and water quality parameter examination. He excels greatly in problem solving, critical thinking, and mathematics.

In addition to his design work, Mr. Roof develops technical specifications for projects and reviews submittals for Contractor work. He also produces various permit applications and asset management plans, performs standard computations and analysis, and prepares drawings and visual aids.

Mr. Roof has or is currently providing services on the following projects:

- Boonton – Myrtle Avenue, Roessler Street & Lathrop Avenue Sewer System Improvements
- Clinton – Water Reservation Applications
- Hackensack – Voorhis Lane Pump Station – Renovations & replacement of Gravity Sewer Line
- Private Water Utility Client – Passaic, Sussex & Warren County Water System Services
- Hampton – Water System Asset Management Plan
- Hardyston – Summit Lake Water Main Replacement
- Canaan (PA) – Waymart Well #7 Treatment

Mr. Roof is proficient with the following programs: AutoCAD, Creo Parametric, SolidWorks, AutoDesk Inventor, and Microsoft Office Applications.

Mr. Roof continues to learn the systems and procedures at the firm and is further developing his knowledge of state and local regulations within the field. He is an excellent addition to the Water/Wastewater team.





MICHAEL R. MACHALABA ^{EIT}

SENIOR DESIGNER

BILLING TITLE: Senior Designer / Senior Survey Analyst

EDUCATION

Bachelor of Science, Civil Engineering,
New Jersey Institute of Technology, NJ,
2017

CERTIFICATIONS

Engineer-In-Training (EIT)

- New Jersey

ASCE GRADE

III

Mr. Michael R. Machalaba joined **SUBURBAN CONSULTING ENGINEERS, INC.** (SCE) in February 2023 as a Senior Designer in the Water/Wastewater Department. Mr. Machalaba has over seven (7) years of professional experience in wastewater and stormwater engineering.

At SCE, Mr. Machalaba provides technical design services on a variety of projects for SCE's public, private, and governmental agency Clients. He performs CAD drafting and affiliated design work throughout the entire duration of a project including initial kick-off and project closeout. Specifically, Mr. Machalaba is designing distribution and treatment facilities including Pump Stations, Treatment Facilities, and Water Tank Improvement projects. The design work he performs involves detailed analytical analysis of hydraulics and water quality parameter examination.

Additionally, Mr. Machalaba develops technical specifications for projects and reviews submittals for Contractor work. He also produces various permit applications and asset management plans, performs standard computations and analysis, and prepares drawings and visual aids.

Prior to joining SCE, Mr. Machalaba provided construction observation services and permit application and compliance for CSO permits, Treatment Works Approvals (TWA), and the New Jersey Municipal Stormwater Regulation Program for sewer utility Clients.

The following is a list of projects Mr. Machalaba has or is currently providing services on:

- Bryam - Water System Upgrades - WIIN Grant - Design, Permitting, & Bid Phase Services
- West Milford - Olde Milford Estates Continental Booster Station - Final Design Services
- Montville - Bretton, Cheryl, Rennes Water Main Replacement - Design & Bid Construction Services
- Peapack-Gladstone - Holland Road Water Main Replacement - Engineering Design, & Permitting Services
- Lebanon - Water Main Replacements - Design Services

Mr. Machalaba is proficient in various programs including, but not limited to, AutoCAD, AutoCAD Civil 3D, ArcGIS, and Microsoft Office.





JENNIFER A. WATKINSON

SENIOR DESIGNER

BILLING TITLE: Senior Designer/Senior Survey Analyst

EDUCATION

Bachelor of Arts in Geography,
Concentration in Environmental Planning,
Bloomsburg University, PA, 2008

Ms. Jennifer A. Watkinson joined **SUBURBAN CONSULTING ENGINEERS, INC.** (SCE) in Spring 2020 and is currently a Senior Designer in our Water/Wastewater Department. She actively works on a variety of private, public, and governmental projects consisting of water and wastewater infrastructure and facility design, regulatory permitting, and construction administration and observation.

Prior to joining SCE, Ms. Watkinson gained project management experience working with both private and public Clients, leading all aspects of the projects from inception to completion. Her vast experience in design, permit applications, and project team coordination leads to many successfully completed projects. Ms. Watkinson also has experience with Geographic Information System (GIS) mapping. As the lead GIS specialist, she led conversions from AutoCAD to GIS for various Clients in order for them to accurately and easily track their assets across multiple states.

Ms. Watkinson is working diligently with Project Managers and other technical staff members to meet project deliverables and project deadlines for all of the firm's projects as she continues to expand her knowledge in the field of engineering.

Ms. Watkinson has or is currently providing services on the following projects at the firm:

- Township of West Milford – Lead & Copper Compliance for a Private Utility Client
- Township of Hardyston - Summit Lake Water System Improvements
- Borough of Essex Fells - PFOA Removal Feasibility Study
- Township of Parsippany – Troy Hills - Well 1A & 21R Updates
- Borough of New Brunswick – Rutgers Village Water Main
- Town of Clinton – Watermain Design and Construction Inspections
- Township of Toms River - Windsor Avenue Treatment Plant Upgrade

Ms. Watkinson is proficient in the following programs: ArcGIS, AutoCAD, Revit, and ESRI.

What Ms. Watkinson brings to the Water/Wastewater Department is invaluable. Her ability to complete tasks on-time and in accordance with SCE's standards enables the firm to provide quality deliverables and services to our Clients.





RACHEL M. INDANO

SENIOR DESIGNER

BILLING TITLE: Senior Designer / Senior Survey Analyst

EDUCATION

Lenape Valley Regional High School, NJ,
2006

Coursework completed toward Liberal
Arts Degree, Sussex County Community
College, NJ

Ms. Rachel M. Indano joined **SUBURBAN CONSULTING ENGINEERS, INC.** (SCE) in July 2024 as a Senior Designer in the Waster/Wastewater Department. Ms. Indano is responsible for providing technical design services on a variety of projects for SCE's public, private, and governmental agency Clients.

Ms. Indano has over six (6) years of design experience utilizing AutoCAD to produce detailed technical drawings for a wide array of projects including fabrication, structural design, and equipment layouts. She has engineered and managed various technical projects in wastewater equipment, such as shaftless screw conveyors, belt conveyors, shafted conveyors, and walking beam flocculators. Her diverse experience extends to structural design, creative arts, and renewable energy. Ms. Indano is a creative and results-oriented professional dedicated to providing timely, accurate, and cost-effective services.

At SCE, Ms. Indano performs CAD drafting and affiliated design work throughout the entire duration of a project including initial kick-off and project closeout. Specifically, Ms. Indano is designing distribution and treatment facilities including Pump Stations, Treatment Facilities, and Water Tank Improvement projects. The design work she performs involves detailed analytical analysis of hydraulics and water quality parameter examination.

Additionally, Ms. Indano develops technical specifications for projects and reviews submittals for Contractor work. She also produces various permit applications and asset management plans, performs standard computations and analysis, and prepares drawings and visual aids.

Ms. Indano has or is currently providing services on the following projects:

- Califon; Green; Hardyston - New Jersey per- and polyfluoroalkyl substances (PFAS) Bundle #7 - Califon Wells 3, 4, and 5
- Morris County Municipal Utilities Authority - Professional Engineering Services - Water Division
- Bernard - Harrison Brook Sewage Treatment Plant Clarifiers Refurbishment

Ms. Indano is proficient with the following programs: AutoCAD, Adobe Photoshop, and Microsoft Office.





SYDNEY R. GRANHOLM ^{EIT}

DESIGNER

BILLING TITLE: Designer / Survey Analyst

EDUCATION

Bachelor of Science, Civil Engineering,
The College of New Jersey, NJ, 2023

CERTIFICATIONS

Engineer-in-Training

- New Jersey

ASCE GRADE

II

PROFESSIONAL AFFILIATIONS

American Society of Civil Engineers

Ms. Sydney R. Granholm joined **SUBURBAN CONSULTING ENGINEERS, INC.** (SCE) full time in June of 2023 as a Designer in the Water/Wastewater Department. She attended The College of New Jersey (TCNJ) and earned a Bachelors of Science degree in Civil Engineering. Ms. Granholm is responsible for providing technical design services on a variety of projects for SCE's public and private utility Clients.

Ms. Granholm gained valuable experience working for SCE as an Intern during the summer of 2022. During her time as an Intern, Ms. Granholm assisted the Water/Wastewater Department with the design of various projects, including Pump Station Rehabilitation and Lead Service Line and Water Main Replacement projects. Additionally, Ms. Granholm gained experience as an Engineering Intern at a large Sewerage Commission in New Jersey. During her internship she assisted in preparing drawings of CSO regulators and investigating CSO regulator stop log elevations; creating schematic drawings of wet weather pump station hydraulic systems; and using GIS software to take measurements of catch basins, ground control points, fire hydrants, manholes, etc.

Currently at SCE, Ms. Granholm performs CAD drafting and affiliated design work. Specifically, Ms. Granholm is designing Pump Stations, Distribution and Treatment Facilities, Water Tank Improvements, and Water Main Replacement projects. The design work she performs involves detailed analytical analysis of hydraulics and water quality parameter examination. She also produces various permit applications and asset management plans, performs standard computations and analysis, and prepares drawings and visual aids as required.

Ms. Granholm has or is currently providing services on the following projects:

- South Plainfield - Maple Avenue Water Main Replacement
- Montville - William Place Pump Station Improvements
- Washington Township - Springtown Pump Station Rehabilitation
- Phillipsburg - Sitgreaves, S. Main Street, & Mercer Streets - Lead Service Line & Water Main Replacement

Ms. Granholm is proficient in various software programs including, but not limited to, AutoCAD, MATLAB, PMWeb, and Microsoft Office.





TASNIM S. RITU ^{EIT}

DESIGNER

BILLING TITLE: Designer / Survey Analyst

EDUCATION

Masters of Science, Environmental Engineering, Montana State University, MT, 2022

Bachelor of Science, Civil Engineering, Bangladesh University of Engineering & Technology, 2019

CERTIFICATIONS

- Engineer-in-Training (EIT) - New Jersey
- CITI Program: Biosafety/Biosecurity , OSHA Bloodborne Pathogens, 1-Basic
- CITI Program: Biosafety for BSL1 and BSL2 Laboratories
- Chemical Safety for Laboratory Workers
- Hazard Communication and GHS: What Employees Need to Know

ASCE GRADE

II

PROFESSIONAL AFFILIATIONS

- AWWA/WEF-MT - Student and Young Professional Committee Member

Ms. Tasnim S. Ritu joined **SUBURBAN CONSULTING ENGINEERS, INC.** (SCE) in January 2023 as a Designer in the Waster/Wastewater Department. Ms. Ritu is responsible for providing technical design services on a variety of projects for SCE's public, private, and governmental agency Clients.

Ms. Ritu performs CAD drafting and affiliated design work throughout the entire duration of a project including initial kick-off and project closeout. Specifically, Ms. Ritu is designing distribution and treatment facilities including Pump Stations, Treatment Facilities, and Water Tank Improvement projects. The design work she performs involves detailed analytical analysis of hydraulics and water quality parameter examination. She excels greatly in problem solving, critical thinking, and mathematics.

Additionally, Ms. Ritu develops technical specifications for projects and reviews submittals for Contractor work. She also produces various permit applications and asset management plans, performs standard computations and analysis, and prepares drawings and visual aids.

Ms. Ritu has or is currently providing services on the following projects:

- Montville - 2023 Water & Sewer Consulting Services
- Clinton - Puleo Development - Engineering Services
- West Milford - Bald Eagle Water System Corrosion Control and Chlorine Contact Timer services
- Independence - Independence Highlands Water System Corrosion Control Services
- Roxbury - Water Quality Control including Lead And Copper Sampling and Total Coliform Sampling Services.
- Essex Fells - Gray Street PFOA Treatment Services.

Ms. Ritu is proficient with the following programs: Microsoft Office, AutoCAD, Chromeleon, HTAccess V3, Agilent MassHunter, LabView, SAP, ETABS, MODFLOW, Model Muse, MODPATH, and Visual MinteQ.





SETH G. COUSINS ^{EIT}

DESIGNER

BILLING TITLE: Designer / Survey Analyst

EDUCATION

Bachelor of Science, Civil Engineering,
West Virginia University, WV, 2024

CERTIFICATIONS

Engineer-In-Training (EIT)

- New Jersey

ASCE GRADE

I

Mr. Seth G. Cousins joined **SUBURBAN CONSULTING ENGINEERS, INC.** (SCE) in July 2024 as a Designer in the Waster/Wastewater Department. Mr. Cousins is responsible for providing technical design services on a variety of projects for SCE's public, private, and governmental agency Clients.

Prior to joining SCE, Mr. Cousins gained valuable experience working as an intern at an Architectural and Engineering firm. He was responsible for identifying and validating the location of lead service lines and their replacements using ArcGIS mapping software, conducting site visits for municipal water systems and well houses, creating models of as-built wells and piping systems, and performing land use research.

At SCE, Mr. Cousins performs CAD drafting and affiliated design work throughout the entire duration of a project including initial kick-off and project closeout. Specifically, Mr. Cousins is designing distribution and treatment facilities including Pump Stations, Treatment Facilities, and Water Tank Improvement projects. The design work he performs involves detailed analytical analysis of hydraulics and water quality parameter examination.

Additionally, Mr. Cousins develops technical specifications for projects and reviews submittals for Contractor work. He also produces various permit applications and asset management plans, performs standard computations and analysis, and prepares drawings and visual aids.

Mr. Cousins has or is currently providing services on the following projects:

- Clinton - Petticoat Lane and Lilac Drive Tank Inspections
- Vineland - Little Robin Sanitary Sewerage Pump Station
- Vineland - Landis Sewerage Authority - Cured in Place Pipeline

Mr. Cousins is proficient with the following programs: AutoCAD, Revit, RISA, ArcGIS, SWMM, and Microsoft Office.





SEAN P. RYAN

DESIGNER

BILLING TITLE: Designer / Survey Analyst

EDUCATION

Bachelor of Science, Civil Engineering,
The Ohio State University, OH, 2023

ASCE GRADE

I

Mr. Sean P. Ryan joined **SUBURBAN CONSULTING ENGINEERS, INC.** (SCE) in July 2024 as a Designer in the Waster/Wastewater Department. Mr. Ryan is responsible for providing technical design services on a variety of projects for SCE's public, private, and governmental agency Clients.

Prior to joining SCE, Mr. Ryan gained valuable experience working as a CAD Designer at an Engineering firm. In this role, Mr. Ryan was responsible for taking precise measurements of build components, assisting in the production of high-quality drafts, and coordinating with the design team to research new technologies to improve efficiency in the drafting process.

At SCE, Mr. Ryan performs CAD drafting and affiliated design work throughout the entire duration of a project including initial kick-off and project closeout. Specifically, Mr. Ryan is designing distribution and treatment facilities including Pump Stations, Treatment Facilities, and Water Tank Improvement projects. The design work he performs involves detailed analytical analysis of hydraulics and water quality parameter examination.

Additionally, Mr. Ryan develops technical specifications for projects and reviews submittals for Contractor work. He also produces various permit applications and asset management plans, performs standard computations and analysis, and prepares drawings and visual aids.

Mr. Ryan has or is currently providing services on the following projects:

- Glen Ridge - Meter Replacements - Prepare I-Bank Bid Documents
- Bernards - Liberty Corner Pump Station System Evaluation - Professional Engineering Services

Mr. Ryan is proficient with the following programs: AutoCAD, Revit, and Microsoft Office.





ABIGAIL PEREZ LOPEZ

CONSTRUCTION ENGINEERING ADMINISTRATOR

BILLING TITLE: Project Administrator

EDUCATION

Bachelor of Science, Geosciences, Geology, Minor in Sustainable Natural Environment, Virginia Polytechnic Institute and State University, VA, 2019

CERTIFICATIONS

OSHA 40 - HAZWOPER

OSHA 10

ACI - Field Engineering Technician Level 1

Ms. Abigail Perez Lopez joined **SUBURBAN CONSULTING ENGINEERS, INC. (SCE)** in October 2024 as a Construction Engineering Administrator in the Waster/Wastewater Department. Ms. Perez Lopez is responsible for providing construction administration services on a variety of projects for SCE's public, private, and governmental agency Clients.

Prior to joining SCE, Ms. Perez Lopez gained valuable experience working as an Engineering Field Technician for a geotechnical and environmental engineering firm providing services to residential, commercial/industrial, energy, professional consulting, and governmental agency Clients. In this role, she was responsible for coordinating with Project Managers, Supervisors, and Foreman on-site to discuss site related problems and to provide unique solutions to construction work to ensure the successful completion of projects.

At SCE, Ms. Perez Lopez provides construction administration services including review of project documentation, such as Contractor Submittals, Requests for Information (RFIs), Field Changes, Change Orders, Meeting Minutes, Daily Reports, and Payment Applications. Ms. Perez Lopez also provides bidding assistance services including managing bidder-submitted RFIs, coordinating and issuing addenda, assisting with bid opening reviews, preparing recommendations for Contractor award, and preparing formal contract documents. Additionally, she supports scheduling efforts and collaborates with the Project Team to maintain project timelines and milestones.

Ms. Perez Lopez has or is currently providing services on the following projects:

- Clinton - PFAS Treatment Improvements
- Boonton - Meter Replacement Program - CWSRF Program Assistance & Design Specifications
- Greenwich - Dumont Urban Renewal - Construction Administration & Observation Services

Ms. Perez Lopez is proficient with the following programs: AutoCAD, Solidworks, Latex, Python, Inventor, Autodesk Fusion 360, Linux, and Microsoft Office.





EMMA K. DEMPSEY PROJECT ADMINISTRATOR

BILLING TITLE: Project Administrator

EDUCATION

Bachelor of Arts, English Literature,
State University of New York, NY, 2016

Bachelor of Arts, Psychology,
State University of New York, NY, 2016

Ms. Emma K. Dempsey joined **SUBURBAN CONSULTING ENGINEERS, INC.** (SCE) in September 2021 at our Office Headquarters located in the Borough of Flanders, State of New Jersey. Ms. Dempsey is currently a Project Administrator and is responsible for the oversight and implementation of the company's processes and procedures within her service department. Ms. Dempsey works closely with the Water/Wastewater Department Manager and technical staff.

Ms. Dempsey is providing administrative support to assist in the preparation of Specifications, Cost Estimates, Bid Packages, Bid Tabulations and Recommendations, Pay Recommendations, Contractor Agreements, Contract Amendments, and Client Change Orders. She is also responsible for finalizing various Environmental, Socially and Economically Disadvantaged Business [SED], Engineer Design, and Stormwater Management Reports. She works closely with Project Managers to prepare documents for compliance with public bidding laws for various funding agencies to ensure smooth and expeditious results.

Additionally, Ms. Dempsey provides key support to departmental staff by coordinating with government and municipal agencies in the application and acquisition of required project permits. She provides quality assurance and quality control (QA/QC) support for all phases of a project from conception to completion.

Ms. Dempsey has experience in a variety of computer programs including Adobe Acrobat, Bluebeam Revu, Microsoft Office (Word, Excel, Power Point), Deltek, and a variety of other software programs where she works with Managers to complete tasks for Clients and projects.

Ms. Dempsey is a significant asset to the SCE team and is dedicated to working efficiently and effectively to promote SCE's mission and core values.





MICHAEL T. KOLODY ^{GISP}

GIS DEPARTMENT MANAGER

BILLING TITLE: Project Manager

EDUCATION

Bachelor of Arts, Geography with GIS Major, West Virginia University, 2004

CERTIFICATIONS/TRAINING

- Certified Geographic Information Systems Professional (GISP)
- Leadership in Energy and Environmental Accredited Professional (LEED AP)
- Parsons Project Management Certification (PMC)
- Trimble Mapping Grade GPS Certified
- 40 Hour HAZWOPER
- Loss Prevention System (LPS)
- Locus EIM SuperUser
- Cartegraph Operation Management Software
- CPR/First Aid Certified
- Smith System Defensive Driver

PROFESSIONAL AFFILIATIONS

New Jersey Geospatial Forum
URISA
MAC URISA

Mr. Michael T. Kolody joined **SUBURBAN CONSULTING ENGINEERS, INC.** (SCE) in March 2022 as the Geographic Information Systems (GIS) Department Manager. Mr. Kolody is currently providing GIS program planning, management and coordination, infrastructure mapping and database management, and application development work for our firm. He is also responsible for the overall coordination, development, implementation, operation, maintenance, and training of the GIS Department. Mr. Kolody plans, organizes, coordinates, and participates in the development and implementation of the firm's GIS to meet mapping and end-user service objectives. Mr. Kolody is dedicated to the GIS field and has over 20 years of professional experience. He excels in GIS data management, spatial analysis, cartography, and asset management.

Over his professional career, Mr. Kolody has managed GIS and GPS/GNSS projects for private companies, utility authorities, and local municipalities throughout the nation. Mr. Kolody has been actively involved in each project, directly responsible for defining and managing project scope, schedule, budget, and quality control. He has extensive experience curating GIS data sourced from private and public domains, implementing web-based asset management systems, configuring web applications that allow Clients to view and interact with GIS data and maps, preparing formally certified municipal tax maps, and managing annual tax map maintenance. Additionally, Mr. Kolody has designed, implemented, and managed spatial geodatabases and has provided GIS, GPS, and analytical data management services for environmental investigation and remediation projects.

Mr. Kolody has successfully managed GIS teams and has lead behavior-based safety initiatives to ensure safe work environments and practices. Mr. Kolody has also prepared and presented web and mobile GIS presentations for municipalities as well as public and private organizations throughout New Jersey including Esri, NJWA, NJWEA, AWWA, and more.

Mr. Kolody is an expert in software programs, including but not limited to: Esri ArcGIS Pro, ArcGIS Enterprise, ArcGIS Online, Esri mobile applications and extensions, Autodesk AutoCAD, Trimble TerraSync and Pathfinder Office, Locus EIM, Cartegraph Operation Management, DTS VUEWorks, and Microsoft Office. Additionally, Mr. Kolody is skilled in using Trimble GeoExplorer Series GPS Units and Eos Arrow Series GNSS Equipment.





AMANDA A. PATON ^{GISP}

GIS ANALYST

BILLING TITLE: GIS Analyst

EDUCATION

Bachelor of Science, GIS, Rowan University, NJ, 2018

Bachelor of Science, Planning, Rowan University, NJ, 2018

Bachelor of Arts, Geography, Rowan University, NJ, 2018

CERTIFICATIONS

Certified Geographic Information Systems Professional (GISP)

Ms. Amanda A. Paton joined **SUBURBAN CONSULTING ENGINEERS, INC.** (SCE) in November 2023 as a GIS Analyst in SCE's GIS Department. Ms. Paton has over seven (7) years of GIS experience and excels in map creation and analysis, data compilation and processing, and GIS database design.

In previous GIS positions, Ms. Paton was responsible for implementing mobile and web GIS and GPS programs along with GIS-based asset management systems for municipal and utility authority Clients. She has worked on all stages of annual maintenance of New Jersey Tax maps including organization of documents, initial comparison, deed research, quality review of AutoCAD revisions, GIS revisions, and coordination with the municipal staff. Ms. Paton has administered various Client ArcGIS Online Organizational accounts, conducted technical training to Clients on GIS software and procedures, and has communicated with Clients to successfully provide innovative GIS solutions.

At SCE, Ms. Paton contributes to the creation of GIS solutions for Clients including web mapping, data collection, data management, and application development and implementation. Ms. Paton is responsible for collecting precise locations and accurate data for items in the field using GPS equipment. Ms. Paton has been trained on SCE's standards and procedures for Enhanced GIS Services and is fully equipped to perform her job responsibilities efficiently. Additionally, she has been trained in on-site safety as part of SCE's Procedural Manual, which all staff are required to comply with.

Ms. Paton has or is currently providing services on the following projects:

- Clinton - Stormwater Mapping & Inventory - GIS Services
- Newton - Moore's Brook Dredging - GIS & CCTV Services
- Parsippany-Troy Hills - Meter Replacement & Lead Service Line Inventory
- Hackensack - Stormwater MS4 Compliance GIS
- Irvington - Stormwater Structure Mapping

Ms. Paton is skilled in using various software programs including, but not limited to, Esri Software (ArcGIS Pro, ArcMap, ArcGIS Online, Esri Mobile Applications, ArcGIS Parcel Fabric, ArcGIS Experience Builder, and ArcGIS Dashboards), Eos Arrow GNSS Receivers, Trimble GPS Pathfinder Office, AutoCAD, Civil 3D, and Microsoft Office.





MICHELLE A. HERISHKO LSRP

ENVIRONMENTAL DEPARTMENT MANAGER

BILLING TITLE: Senior Project Manager

EDUCATION

Master of Science, Environmental Engineering, New Jersey Institute of Technology, NJ, 2011

Bachelor of Science, Environmental Health, Stockton State College, NJ, 1992

LICENSES/REGISTRATIONS

Licensed Site Remediation Professional (LSRP)

- New Jersey Very Small Water System (VSWS) Operator
- N-2 Wastewater Operator

CERTIFICATIONS

40 Hr. OSHA Hazwoper

PROFESSIONAL AFFILIATIONS

New Jersey Licensed Site Remediation Professionals Association (LSRPA)

Ms. Michelle A. Herishko joined **SUBURBAN CONSULTING ENGINEERS, INC.** (SCE) in July 2022 as the firm's Environmental Department Manager. Ms. Herishko is a State of New Jersey Licensed Site Remediation Professional (LSRP) and has over 26 years of experience in the field of environmental science including project management, environmental compliance, permitting, remedial system design, construction management, and start-up services for various types of projects.

Ms. Herishko is an expert in New Jersey Department of Environmental Protection (NJDEP) requirements and has extensive experience completing Phase I and Phase II investigations, preliminary assessment reports, site investigations, remedial investigations, and remedial actions. She has been responsible for managing large scale remediation projects including excavations, ground water containment systems, bioremediation, brownfield redevelopments, and underground storage tanks. As an LSRP, Ms. Herishko has successfully issued over 20 Remedial Action Outcomes (RAOs).

Ms. Herishko is skilled in monitoring budgets, tracking milestones, coordinating resources, negotiating with NJDEP and other regulatory agencies, and establishing project scopes and schedules. She has extensive experience in leadership roles and has provided technical support for the implementation of various remedial technologies.

Ms. Herishko is working closely with various Project Managers at SCE to provide environmental solutions on all projects requiring environmental permitting and remedial services. Ms. Herishko is skilled in implementing a multitude of project management tools, such as SCE's resource allocation and financial management systems, to effectively and efficiently bring each project to a successful and timely completion. She is a key member in ensuring projects maintain their required schedules and is in constant communication with staff members and Clients in order to adhere to SCE's process flow delivery system.





DAVID T. VILLAR ^{AST}

SENIOR PROJECT COORDINATOR

BILLING TITLE: Licensed Professional

EDUCATION

High School Diploma
Certificate of Achievement in
Architecture

LICENSES/CERTIFICATIONS

Licensed Asbestos Safety Technician (AST)

- New Jersey

Lead Inspector/Risk Assessor

OSHA 40 Hazwoper

OSHA 10

Confined Space Entry

EPA/AHERA Asbestos Management
Planner

EPA/AHERA Asbestos Project Designer

EPA/AHERA Asbestos Building Inspector

Mr. David T. Villar joined **SUBURBAN CONSULTING ENGINEERS, INC.** (SCE) in May 2023 as a Senior Project Coordinator in the Environmental Department. Mr. Villar has over 26 years of professional experience providing environmental services on various engineering projects throughout the States of New Jersey, New York, Connecticut, Delaware, Maryland, and Tennessee as well as the Commonwealths of Pennsylvania and Massachusetts.

Prior to joining SCE, Mr. Villar was responsible for the oversight of an Environmental Health and Safety Division, including coordination and oversight of asbestos, lead, and mold inspections on various public, commercial, and residential properties as well as the design and monitoring of asbestos, lead, and mold abatement projects.

Mr. Villar is knowledgeable in New Jersey Department of Environmental Protection (NJDEP) requirements and has extensive experience completing multi-state environmental remediations, underground storage tank (UST) closures, soil excavations, vapor intrusion mitigation systems, and in situ chemical injections for soil and groundwater. He has installed, operated, and maintained in situ air sparge enhanced soil vapor extraction systems, completed groundwater and soil investigations and analysis, and installed soil and groundwater treatment systems.

At SCE, Mr. Villar is responsible for providing environmental solutions on projects requiring environmental permitting and remedial services. He performs field activities, environmental due diligence, investigations, and prepares Site Remediation reports to maintain projects' compliance with NJDEP regulations. He works closely with Engineers and Landscape Architects at the firm to provide innovative solutions that maintain the protection of human health and the environment for our diverse group of Clients.





MATTHEW S. POPIN ^{PWS}

PERMITTING MANAGER

BILLING TITLE: Project Manager

EDUCATION

Bachelor of Arts, Geography,
Concentration in Environmental Studies,
Montclair State University, NJ, 2012

Colorado State University, Master of
Natural Resources Stewardship:
Ecological Restoration (In progress)

CERTIFICATIONS

- Certified Professional Wetland Scientist (PWS)
- Qualified Compliance Inspector of Stormwater (QCIS)
- Wetland Delineation Certificate Series - Rutgers University Office of Continuing Professional Education
- EPA Radiation NORM I
- OSHA 40-hour HAZWOPER
- OSHA 10-hour Construction Safety

PROFESSIONAL AFFILIATIONS

Society of Wetlands Scientists
Association of Wetland State Managers
Society for Ecological Restoration
AmeriCorps NJDEP Watershed
Ambassador Alumni

Mr. Matthew S. Popin joined **SUBURBAN CONSULTING ENGINEERS, INC.** (SCE) in April 2024 as a Permitting Manager for the firm. Mr. Popin has over 10 years of experience in the field of environmental science, providing project management and technical consulting services for diverse environmental projects throughout the State of New Jersey.

Mr. Popin is knowledgeable in environmental conservation laws, regulations, and policies, including NJDEP Flood Hazard Area Control Act and Freshwater Wetlands Protection Act permitting, as well as NJDEP/EPA guidelines for Ecological Evaluations. He has completed numerous permit applications and obtained approvals from NJDEP relative to freshwater wetlands, flood hazard area control, and state open waters.

Additionally, Mr. Popin has extensive experience performing field investigations and preparing technical documents, including NJDEP/USACE wetland delineations, baseline ecological evaluations, threatened and endangered species habitat surveys, plant identification, and natural resource inventory reports. Specifically, he has facilitated the design and implementation of integrative invasive species management, native vegetative restoration, and habitat creation with defined goals identified and monitored using adaptive management; designed artificial vernal pools; performed vernal pool surveys; and performed surveys for Pine Barrens tree frog, woodland raptors, rare plants, and various ornithological surveys.

At SCE, Mr. Popin plans and performs wetland delineations, NJDEP letters of interpretation, and oversees the preparation of reports including NJDEP and USACE permit packages. He is responsible for applicable land use permitting, including Freshwater Wetlands Protection Act, Flood Hazard Area Control Act, and Coastal Zone Management regulations.

Mr. Popin's years of experience and acquired knowledge gained from working on projects involving unique design aspects and overcoming challenging project complexities, is the foundation that supports him in his management role at the firm. To ensure our Clients' needs are met while also completing projects in accordance with the firm's high standards, Mr. Popin is working alongside the Principals and Managers on each project.

Mr. Popin is currently pursuing his Master of Natural Resources Stewardship (MNRS) in Ecological Restoration at Colorado State University.





KARLIE M. WILLIAMS

SENIOR ENVIRONMENTAL SCIENTIST

BILLING TITLE: Senior Environmental Scientist

EDUCATION

Bachelor of Arts, Environmental Studies
Concentration in Environment and
Society, University of Delaware, 2017

CERTIFICATIONS

40-hr OSHA HAZWOPER
AutoCAD Level 1: Basic 2-D Drawing
Wetland Delineation Certification- NJ

Ms. Karlie M. Williams joined **SUBURBAN CONSULTING ENGINEERS, INC.** (SCE) in January of 2018 and is currently serving as a Senior Environmental Scientist in our Environmental Department. Ms. Williams has been actively involved in the environmental field since 2016 and was proactive with educating peers and students on a variety of environmental subjects. Before graduating from the University of Delaware in 2017 with her Bachelor of Arts in Environmental Studies with a Concentration in Environment and Society, she gained valuable knowledge working as a Development Intern at The Land Conservancy for Southern Chester County, PA. Ms. Williams is experienced in conducting inspections to identify visual and biological wetlands in accordance with NJDEP guidelines and reporting her findings utilizing technical writing and ArcGIS.

Ms. Williams is working alongside NJDEP Licensed Site Remediation Professionals, Project Managers, and Principals at the firm to meet all the firm's public and private Client project needs. She is currently assisting the firm with conducting environmental due diligence, investigations, and remedial projects in addition to technical review and writing for our Clients' projects. Ms. Williams maintains an understanding of the continuously changing environmental regulations and knowledge of the newest and best products and technologies available.

Projects that Ms. Williams has or is currently providing her expertise on are as follows:

- Franklin - 24 Munsonhurst – Phase I ESA
- Hackensack – Johnson Park Pistol Range – Environmental Oversight and Remediation
- Hackensack – Firehouse – LNAPL gauging & Low Flow Well Sampling
- Hackensack - John Earl Building—UST investigation and removal
- Wantaque – Aqueduct– Wetland Delineation

Ms. Williams is proficient in ArcGIS Online, MS Windows, MS Office, Bluebeam, and Google Earth.

Ms. Williams continues to further her education and experience in the environmental field with attending Flood Hazard Area Control Act Rule courses this year as well as wetland vegetation courses. Ms. Williams has proven to be a significant asset to the Environmental Department at SCE, and she continues to advance and excel in her field of study while remaining dedicated to providing each of our Client's with exceptional services on their unique projects.





CHRISTOPHER F. DUTZ

CAO DEPARTMENT MANAGER

BILLING TITLE: Senior Inspector

Mr. Christopher F. Dutz joined **SUBURBAN CONSULTING ENGINEERS, INC.** (SCE) in June 2021 and currently serves as Construction Administration & Observation (CAO) Department Manager at the firm. Mr. Dutz has over nine (9) years of experience in construction of civil engineering projects encompassing industrial and utility applications. He is experienced in the direct involvement of the construction and field coordination process including project management, field engineering, project safety management, as well as coordination of labor, Contractors, and materials.

Mr. Dutz is highly experienced in writing subcontracts and purchase orders, preparing and submitting pay estimates, coordinating daily field crew logistics, submittals, requests for information (RFI), and project as-builts. Furthermore, Mr. Dutz has extensive experience in leadership positions, having previously managed and operated job site activities and Quality Assurance/Quality Control efforts during the construction of multimillion dollar contracts. He professionally collaborates and communicates with Municipalities, Engineers, Property Owners, Project Managers, and other Clients on a regular basis.

Mr. Dutz has interfaced and is knowledgeable of governmental agencies including the New Jersey Department of Transportation (NJDOT), New Jersey Department of Environmental Protection (NJDEP), Occupational Safety and Health Administration (OSHA), and similar agencies in both Pennsylvania and Delaware.

As CAO Department Manager, Mr. Dutz possesses strong management, supervisory, communication, organizational, and technical skills which assist him during his project observations.

Mr. Dutz has or is currently providing services on the following engineering-related projects:

- Hackensack - Combined Sewer Separation - Contract 3
- Mount Arlington - Water Tank Rehabilitation
- Clinton - Foster-Wheeler Booster Pump Station Upgrades
- Franklin - Various Water Main Disinfection Projects

Mr. Dutz is an excellent addition to the SCE Team. He works diligently with Clients and coworkers to ensure all requirements are maintained throughout the duration of projects. Mr. Dutz is knowledgeable in SCE's processes and procedures and provides an exceptional level of service and enthusiasm on his projects.

EDUCATION

Bachelor of Science, Civil Engineering
Catholic University of America
Washington DC, 2014

CERTIFICATIONS

OSHA 30 Hour
AMPP/NACE Basic Coatings Inspector
NJ Transit Contractor Safety/RWP
Training

SOFTWARE/PROGRAM EXPERIENCE

- BlueBeam Revu
- Heavy Construction Systems Specialists, Inc. (HCSS) Construction Software
- Microsoft Office Suite

ASCE GRADE

III



RAYMOND A. CACCIAGUIDA

SENIOR CONSTRUCTION OBSERVER

BILLING TITLE: Senior Inspector

EDUCATION

College Prep Program
Dover High School, 1983

CERTIFICATIONS

Construction Trade Electrical, Fire and
Mechanical System
NICET Level I – Highway Construction
Inspection
NICET Level II – Underground Utilities
Construction/Water & Sewer Lines

Mr. Raymond A. Cacciaguida joined **SUBURBAN CONSULTING ENGINEERS, INC.** (SCE) in April 2014 as a Senior Construction Observer, and has over 20 years of experience in construction inspection and management services working on a variety of engineering and commercial related projects for both public and private Clients.

Mr. Cacciaguida is highly experienced with collecting on-site data, scheduling and coordinating project deliverables, providing site management services, and producing daily project reports. Furthermore, he has extensive experience in leadership positions which require developed skills and innovative thinking. Mr. Cacciaguida is assisting SCE on a variety of projects which involve construction observation and inspection reporting.

As a member of the Construction Administration and Observation (CAO) Department at SCE, Mr. Cacciaguida has or is currently providing services on the following site/civil engineering related projects:

- Washington Borough – Jade Acquisition Site Plan
- Allamuchy – Panther Valley Property Owners Association – Roadway Improvements
- Hoboken – Southwest Park Reconstruction
- Hackettstown – Hasting Square Association Improvements
- Livingston – Water Main Improvements
- Montclair – MSU – Site Planning & Civil Engineering Services

Mr. Cacciaguida has been instrumental to SCE since he joined the company in 2014. He uses his developed professional observation skills and abilities to assist with the inspection portion on the projects he is a part of. His responsibilities for these projects include construction observation and inspection services where he ensures essential project requirements, such as daily performance reports, cost control, and Contractor's compliance with contract documents and code requirements. His knowledge and observation skills are vital in ensuring successful completion of all of SCE projects.





JOSEPH D. PHIL PLS, PP, CFS

PRINCIPAL/LAND SURVEYING DEPARTMENT MANAGER

BILLING TITLE: *Principal/Project Officer*

Mr. Joseph D. Phil is the Land Surveying Department Manager at **SUBURBAN CONSULTING ENGINEERS, INC.** (SCE) and is a licensed Professional Land Surveyor (PLS) in the States of New Jersey, New York, and Georgia as well as the Commonwealth of Pennsylvania. Additionally, he is also a licensed Professional Planner (PP) in the State of New Jersey. Mr. Phil joined the firm in August 2009 and currently manages all survey and a variety of engineering projects. Mr. Phil has gained valuable experience performing services on-site and is instrumental with many of the firm's survey equipment technology.

EDUCATION

Bachelor of Science, Civil Engineering
West Virginia University, WV, 2009
Magna Cum Laude

Bachelor of Science, Engineering
Technology, New Jersey Institute of
Technology, NJ, 2013
Cum Laude

LICENSES/CERTIFICATIONS

Professional Land Surveyor (PLS)

- New Jersey
- New York
- Pennsylvania
- Georgia

Professional Planner (PP)

- New Jersey

Certified Floodplain Surveyor (CFS)

Engineer-in-Training (EIT)

Conrail Contractor

ASCE GRADE

VI

PROFESSIONAL AFFILIATIONS

- New Jersey Society of Professional Land Surveyors (NJSPLS) – North Jersey Chapter
- New York Association of Professional Land Surveyors (NYSAPLS)
- Pennsylvania Society of Land Surveyors (PSLS)
- National Society of Professional Surveyors (NSPS)

Mr. Phil's experience in the survey field includes topographic surveys, construction stakeout, Major and Minor Subdivisions, metes and bounds descriptions, easement maps, ALTA/NSPS Land Title Surveys, boundary surveys, record research, wetland location, tax map preparation and maintenance, and high definition 3D LiDAR scanning. Mr. Phil's experience also includes preliminary and final civil engineering design in various concentrations including major and minor site plans and subdivisions, site layout, roadway design, grading plans, stormwater management, septic system design, structural analysis, shop drawings, SESC plans, technical specification preparation, and quantity takeoff. Mr. Phil has provided insight services on various construction projects for which construction administration, construction stakeout, review payment requests, and coordination between Contractors and Clients are required for successful completion.

As the Principal Land Surveyor for the firm, Mr. Phil is accountable for all land surveying services offered, including the support for all engineering related projects requiring land surveying services. His experience in the industry and his commitment to creating solutions for our Clients' success by delivering innovative and professional services exceeds expectations on a consistent basis. As a licensed professional, Mr. Phil strives to continuously hold paramount the safety, health, and welfare of the public and SCE employees in all his duties.

Mr. Phil is skilled in implementing a multitude of project management tools, such as SCE's resource allocation and financial management systems, to effectively and efficiently bring each project to a successful and timely completion. He is a key member in ensuring projects maintain their required schedules and is in constant communication with staff members and clients in order to adhere to SCE's process flow delivery system.

Mr. Phil has extensive experience in many computer programs such as computer-aided drafting and design in AutoCAD Civil 3D, Trimble Business Center, MicroStation, ESRI, ArcGIS package, Bentley FlowMaster, and Bentley PondPack. He also has gained valuable experience in high definition 3D laser scanning software programs such as Trimble RealWorks and FARO Scene.





KEVIN A. BAIER

CST I, FAA PART 107
CERTIFIED REMOTE PILOT
SENIOR TECHNICIAN

BILLING TITLE: Senior Technician

EDUCATION

High School Diploma

CERTIFICATIONS

Certified Survey Technician Level I (CST I)

FAA Part 107 Certified Remote Pilot

OSHA 10

Conrail Contractor

Mr. Kevin A. Baier joined **SUBURBAN CONSULTING ENGINEERS, INC.** (SCE) in November 2022 and currently serves as a Senior Technician in our Land Survey Department. Mr. Baier has prior experience in leadership roles and his effectiveness and attention to detail allows him to deliver prompt services to his Clients.

At SCE, Mr. Baier is working closely with Project Managers and Project Coordinators to provide our Clients with precise and complete survey deliverables including subdivisions, metes and bounds, construction layout calculations, as-built surveys, grade sheets, and sketches. Additionally, Mr. Baier is responsible for data organization and preparing survey data for field crews.

Mr. Baier is working diligently on projects and is gaining further knowledge and understanding of local rules and regulations relevant to our Clients' projects. He continues to meet and exceed all project requirements and deliverables to ensure that our Clients receive an optimal level of service.

As a member of the Survey Department, Mr. Baier has or is currently providing services on the following projects:

- Ridgewood - Various Transmission and Distribution Improvements - Surveying Services
- Roseland - Lester Noecker School - Boundary & Topographic Survey & Wetland Education Flag Locations Services
- Wanaque - Lakeland Regional High School Field Improvements - Surveying Services
- Washington Boro - 10 PSIG System Upgrade - Phase II - AFE 173041 (Base Map Services)
- Springfield - US Route 22 Water Main Replacement - Surveying Services
- Paterson - 2023 City Wide Road Resurfacing Program - Supplemental I - Surveying Services

Mr. Baier is proficient with various engineering computer programs including AutoCAD, Civil 3D, Revit, PIX4D, and Microsoft Office.



5

PROPOSED HOURLY RATES

5



PROPOSED HOURLY RATES

REQUEST FOR PROPOSALS PROFESSIONAL SERVICES #02 ENGINEERING SERVICES – SOLID WASTE

Principal/Project Officer	\$225/hour
Senior Project Manager	\$220/hour
Project Manager	\$215/hour
Senior Project Licensed Professional	\$205/hour
Project Licensed Professional	\$195/hour
Licensed Professional	\$185/hour
Senior Project Coordinator	\$205/hour
Project Coordinator	\$200/hour
Senior Designer/Senior Survey Analyst	\$175/hour
Designer/Survey Analyst	\$160/hour
Senior Environmental Scientist	\$175/hour
Environmental Scientist	\$160/hour
Senior Project GIS Analyst	\$185/hour
Project GIS Analyst	\$180/hour
GIS Analyst	\$175/hour
Senior GIS Technician	\$165/hour
GIS Technician	\$155/hour
Senior GIS Project Coordinator	\$180/hour
GIS Project Coordinator	\$175/hour
Senior Inspector	\$165/hour
Inspector	\$155/hour
Senior Technician	\$160/hour
Technician	\$150/hour
Project Administrator	\$165/hour
Administrative Support	\$105/hour

Equipment Unit Cost:

⇒ Unmanned Aerial Systems/Remotely Operated Vehicle	\$150/hour
⇒ Robotic/LiDAR	\$50/hour
⇒ GPS	\$25/hour
⇒ Environmental Injection Pump & Equipment	\$150/day

Public Meeting Attendance: 2-hr. min. charge

Reimbursable expenses may include but are not limited to printing / reproduction, mileage, parking and tolls, overnight postage, messenger fees, certified mailings, certified property owners list, uniformed traffic protection, permit applications, and associated filing or recording fees.

Any third-party incurred reimbursable expenses and/or subconsultant fees will be invoiced at SCE's **cost plus 15%**.

Mileage will be billed in accordance with federal prevailing rate.



6

SIMILAR PROJECT
EXPERIENCE



SIMILAR PROJECT EXPERIENCE

Parsippany Transfer Station Motor Control Center Improvements, Township of Parsippany

Client: MCMUA

Contact: James Deacon, Solid Waste Coordinator, (973) 285-8391

Dates of Service: 2023 - Present

SCE performed the electrical inspection, design, and construction administration for the Parsippany Transfer Station Motor Control Center (MCC) Improvements. This project includes the design of a new MCC, conduits, conductors, and work sequence to replace the existing MCC which had exceeded its useful life and posed significant risk due to failure of electrical components.

Mt. Olive Transfer Station Motor Control Center Improvements, Township of Mt. Olive

Client: MCMUA

Contact: James Deacon, Solid Waste Coordinator, (973) 285-8391

Dates of Service: 2023 - Present

SCE performed the electrical inspection and design for the Mt. Olive Transfer Station MCC Improvements. This project includes the design of a new MCC, conduits, conductors, and work sequence to replace the existing MCC which had exceeded its useful life and posed significant risk due to failure of electrical components.

Mt. Olive Transfer Station Water Storage Tank Inspection, Township of Mt. Olive

Client: MCMUA

Contact: James Deacon, Solid Waste Coordinator, (973) 285-8391

Dates of Service: 2021

SCE performed inspection on the Mt. Olive Transfer Station Water Storage Tank and corresponding tank inspection report. This report was critical to identify improvements necessary to satisfy the Township Inspector, as well as ensure long term operation of the tank and site safety.

Household Hazardous Waste Facility Paving Improvements, Township of Mt. Olive

Client: MCMUA

Contact: James Deacon, Solid Waste Coordinator, (973) 285-8391

Dates of Service: 2021

SCE provided Engineering design and construction oversight for the paving improvements at the Mt. Olive Household Hazardous Waste Facility. The project included subsurface improvements, milling and asphalt surface course paving, striping, and replacement of the catch basin.

Parsippany Compost Facility Paving Improvements, Township of Parsippany-Troy Hills

Client: MCMUA

Contact: James Deacon, Solid Waste Coordinator, (973) 285-8391

Dates of Service: 2021

SCE provided Engineering design and construction oversight for the paving improvements at the Parsippany Compost Facility. The project included subsurface improvements, milling and asphalt surface course paving, replacement of the catch basin, and other improvements to the facility to improve operation.

SIMILAR PROJECT EXPERIENCE

MUNICIPAL APPOINTMENTS

Consulting Engineer – City of Hackensack, County of Bergen, NJ

Client: City of Hackensack

Dates: 2018 – Present

Contact: James A. Mangin, Chief Financial Officer, (201) 646-3935

Kris Wheaton, PE, PP, BCEE, City Engineer, (201) 646-7596



SCE has been assisting the City of Hackensack (City) in the capacity of Consulting Engineer since 2018. SCE regularly participates in the capital project planning budgeting process and scheduling of parks and recreation improvements; public building and facility improvements; due diligence and property acquisition support; and combined sanitary and storm sewer collection system improvements. While supporting the City in this role, we have aided in securing approximately \$60M in grants or principal forgiveness (PF) through various sources for the progression of its infrastructure and facilities. Furthermore, we assisted in the mitigation of an excavation permit procedure and fee structure to cover costs extended by the City during the review and inspection of City-wide excavations. In addition to the daily support and consulting services provided, SCE has designed and overseen the construction of the following significant projects:

- FEMA HMGP Flood Mitigation
- Green Street Sewer Separation
- CSO LTCP Implementation
- Bosses Creek Pump Station
- Stormwater System Assessment
- Arena Diner Redevelopment Plan
- Environmental Engineer
- 321 Main Street Amended Redevelopment Plan
- Pump Stations - Stormwater System Assessment
- Carver Park Improvements
- Johnson Park Pistol Range – Berm Remediation
- DPW Yard - Environmental Services
- Firehouse - Environmental Services
- Main Street Sewer Separation
- Main Street Streetscape
- Main Street Two-Way Conversion
- Clay Street Sewer Separation
- Staib Park Improvements
- Columbus Park Improvements
- West of the Rail Sewer Separation
- Anderson Sewer Separation
- Johnson Park Improvements
- City Tree Inventory
- John Earl Building ADA Improvements
- Green Acres ROSI Coordination
- MS4 Compliance Services
- GIS Infrastructure Mapping Services
- City Hall Façade Repair
- Various CCTV & Cleaning Contracts
- NJDEP Public Engagement Sessions

Consulting Engineer – Village of Ridgefield Park, County of Bergen, NJ

Client: Village of Ridgefield Park

Contact: John Anlian, Commissioner, (201) 641-4950

Dates: 2023 – Present

SCE has been assisting the Village of Ridgefield Park (Village) in the capacity of Consulting Engineer. SCE has assisted the Village in revisions to its New Jersey Pollutant Discharge Elimination System (NJPDES) permit for the operation of its combined sewer system. This has allowed the Village to pursue sewer separation projects subject to substantial grant funding through the State Revolving Fund (SRF). SCE is designing the Village's first sewer separation project at this time, which is expected to be funded by 80% grants through our SRF support group. Additionally, SCE has assisted the Village on the following projects:

- Sewer Separation
- Long Term Control Plan Permitting and Implementation
- Sanitary Sewer, Stormwater, and Combined Sewer Asset Collection and Investigations
- Veteran's Park Wetlands Delineation and Letter of Interpretation
- Nature Preserve Habitat Restoration
- SRF Consulting



SIMILAR PROJECT EXPERIENCE

MUNICIPAL APPOINTMENTS

Consulting Engineer – Town of Newton, County of Sussex, NJ

Client: Town of Newton

Contacts: Thomas Russo, Jr., Town Manager, (973) 383-3521 ext. 224

Dates: 2019 – Present

SCE is providing professional engineering, surveying, permitting, and New Jersey Department of Environmental Protection (NJDEP) Clean Water State Revolving Fund (CWSRF) coordination services for the planning and design of stormwater infrastructure and stream dredging projects for the Town of Newton (Town). Furthermore, as the Town meets the "Affordability Criteria", SCE has assisted the Town with the procurement of two (2) street sweepers, one (1) vacuum/jetter truck, two (2) dump trucks, and one (1) heavy duty pickup truck to assist in cleaning and maintaining its infrastructure. This procurement is covered by 100% PF through the CWSRF.

Consulting Engineer – Borough of Seaside Heights, County of Ocean, NJ

Client: Borough of Seaside Heights

Contact: Christopher Vaz, Borough Administrator, (732) 212-6806

Dates: September 2023 – Present

SCE is providing professional engineering, surveying, permitting, and NJDEP Drinking Water State Revolving Fund (DWSRF) as well as CWSRF coordination services for the planning and design of drinking water and stormwater infrastructure projects for the Borough of Seaside Heights (Borough). SCE is assisting the Borough to secure 100% PF to a maximum of \$4M for water treatment plant and infrastructure resiliency improvements, and has already successfully secured \$2M of 100% PF towards stormwater infrastructure improvements for State Fiscal Year 2024 (SFY24). The Borough meets the "Affordability Criteria" and SCE has performed planning and design efforts as well as bid construction services on projects that have received 100% PF.

Municipal Consulting Engineer – City of Elizabeth, County of Union, NJ

Client: City of Elizabeth

Contact: John Papetti, Jr., Director of Public Works, (908) 820-4101

Dates: 2012 – Present

SCE has been working with the City of Elizabeth (City) as Consulting Engineer since 2012. SCE assists and supports the City in Park and Recreation Improvements that have included multiple projects in the following parks: Holland Park, Kenah Park, Miller Park, River Trail, and 6th Street Park.

Utility Engineer – Township of Montclair, County of Essex, NJ

Client: Township of Montclair

Contact: Michael Primavera, Acting Superintendent / Licensed Operator, (973) 744-4600

Dates: 2004 – Present

SCE provides water system consulting, engineering, permitting, and construction observation services to the Township of Montclair (Township). This includes preparation of plans and specifications as well as providing construction observations. Projects include water mains, lining of existing pipes, wellhouse upgrades including electrical, control, ventilation and treatment, and the design and oversight of an air stripper tower and clearwell system replacement. Through a series of facility and distribution system upgrades, SCE has assisted the Township in achieving 4-log compliance. SCE also provides troubleshooting and emergency consulting services. SCE has successfully designed, permitted, and overseen the construction of several projects funded by the New Jersey Environmental Infrastructure Financing Program (NJEIFP) for the Township in recent years.

SIMILAR PROJECT EXPERIENCE

MUNICIPAL APPOINTMENTS

Consulting Engineer – City of Perth Amboy, County of Middlesex, NJ

Client: City of Perth Amboy

Contact: Kenneth Ortiz, Superintendent of Recreation, (732) 826-1690

Dates: 2015 – Present

SCE has been assisting the City of Perth Amboy (City) and the City of Perth Amboy Department of Public Works (DPW) in the capacity of Consulting Engineer since 2015. SCE has supported the City in various types of projects such as Park and Recreation Improvements, DPW Facility Expansion/Improvements, DPW oversight, Water Infrastructure Improvements, Licensed Site Remediation Professional (LSRP) Environmental Services, and Structural Engineering Services. The following are some of the significant projects that SCE has contributed to:

- Stanford Street Underground Storage Tank
- Runyon Garage Structural Improvements
- DPW Gate and Recycling Expansion
- Backwash Tank Improvements
- Washington Park, Rudyk Park, and Willow Pond Park



Consulting Engineer – City of Trenton, County of Mercer, NJ

Client: City of Trenton

Contact: Isabel C. Garcia, Purchasing Agent, (609) 989-3138

Dates: 2014 – Present

SCE has been assisting the City of Trenton (City) and Trenton Water Works in the capacity of Consulting Engineer since 2014. SCE has supported the City in various types of projects such as Park and Recreation Improvements, Water Infrastructure Improvements, and Construction Administration Services. The following are some of the significant projects that SCE has contributed to:

- Lead Service Line Replacement
- Water Main Cleaning and Lining Programs
- Lawrenceville Water Storage Tank
- Mercerville Water Storage Tank
- Hetzel Park Improvements



Consulting Engineer – Township of Cedar Grove, County of Essex, NJ

Client: Township of Cedar Grove

Contact: Joseph Zichelli, Esq., Township Manager, (973) 239-1410 x 202

Dates: 2022 – Present

SCE has been assisting the Township of Cedar Grove (Township) in the capacity of Consulting Engineer since 2022. SCE has supported the Township in various types of projects and is also the Planning and Zoning Board Engineer for the Township. SCE contributed to the following significant projects:

- Little Falls Basketball Court
- Peckman River - NJDEP Permitting
- New Jersey Department of Transportation (NJDOT) Roadway Improvements
- NJDEP MS4 Permitting
- Ordinance Revisions
- Coordination with PSE&G for Utility Improvements



SIMILAR PROJECT EXPERIENCE

MUNICIPAL APPOINTMENTS

Consulting Engineer – City of Hoboken, County of Hudson, NJ

Client: City of Hoboken

Contact: Olga Garcia, PE, CME, City Engineer, (201) 420-2000

Dates: 2019 – Present

SCE has been assisting the City of Hoboken (City) in the capacity of Consulting Engineer since 2019. SCE has supported the City in various types of projects such as Park and Recreation Improvements, Roadway Improvements, Drainage Improvements, DPW/Salt Dome Improvements, Permitting Inspection Services, Funding and Grant Support, and Master Planning services. SCE contributed to the following significant projects:



- Maxwell Place Waterfront Park Improvements
- Church Square Park Improvements
- Southwest Park Improvements
- Madison Street Park Renovations
- DPW Salt Dome
- Steven's Spray Park Improvements
- NJDOT Roadway Improvements
- State Revolving Fund Consulting
- Water Permit Inspections

Water Division Consulting Engineer – Morris County Municipal Utilities Authority, County of Morris, NJ

Client: Morris County MUA

Contact: Larry Gindoff, Acting Executive Director, (973) 285-8583

Dates: 2015 – Present

SCE has held the annual Appointment of Water Division Consulting Engineer for the Morris County Municipal Utilities Authority (MUA) since 2015. SCE assists and supports the Water Division in Planning, Design, Operation, Construction Management, Maintenance, and Compliance. As part of our position with representing the MUA, SCE provided water system hydraulic modeling calibration services as well as several water storage tank and well rehabilitation projects.

Water/Sewer Utility Consulting Engineer – Town of Boonton, County of Morris, NJ

Client: Town of Boonton

Contact: Neil Henry, Town Administrator, (973) 402-9410

Dates: 1993 – Present

SCE has been appointed as the Town of Boonton (Town) Water/Sewer Utility Consulting Engineer for three (3) decades. SCE provides the Town with consulting services regarding improvements and maintenance to their water and sewer infrastructure. SCE was also appointed as the annual Town Engineer until 2021. Engineering services included the preparation of plans, design, and specifications for public work projects and other improvements undertaken by the Town.

Water Engineer – Borough of Hampton, County of Hunterdon, NJ

Client: Borough of Hampton

Contact: Linda Leidner, RMC, Borough Clerk, (908) 537-2329

Dates: 2019 – Present

As Appointed Water Engineer, SCE provides the Borough of Hampton (Borough) with advice and recommendations regarding all phases of Municipal Water Systems, including but not limited to active leak detection and all required reports by the NJDEP. SCE works closely with the Borough's Water Operator on all Municipal Water-related projects.



SIMILAR PROJECT EXPERIENCE

MUNICIPAL APPOINTMENTS

Utility Engineer – Borough of Glen Ridge, County of Essex, NJ

Client: Borough of Glen Ridge

Contact: Erik DeLine, AICP, PP, Deputy Administrator, (973) 748-8400

Dates: 2010 – Present

As the annual Water and Sewer Utility Consultant to the Borough of Glen Ridge (Borough), SCE regularly participates in the capital project planning budgeting and scheduling of water system improvements. Recently, SCE completed several system repair and replacement projects which were funded through the SRF Program. In addition, SCE regularly provides on-call emergency consulting services and facilitates the contracting of those repairs through to completion. Currently, SCE is assisting the Borough with the application of three (3) additional New Jersey Environmental Infrastructure Trust (NJEIT) loan applications which include:

- Engineering oversight for a comprehensive review of approximately 24,000 linear feet (LF) of the Borough's sewers in efforts to prioritize and implement a rehabilitation multi-phase project.
- Equipment procurement.
- Lead service water line replacements and fire hydrant repairs and replacement.

Water & Sewer Consulting Engineer – Town of Clinton, County of Hunterdon, NJ

Client: Town of Clinton

Contact: Richard Phelan, Administrator, (908) 735-8616

Dates: 1999 – Present



SCE has served the Town of Clinton (Town) in the capacity of Water Consulting Engineer, since 1999. As Town Sewer Engineer, SCE's responsibilities include providing services necessary to review and offer recommendations concerning municipal sanitary sewer infrastructure. SCE also observes the installation of municipal and private site sewer utility improvements to determine conformance with municipal and state requirements and approvals granted by the Town Planning Board and/or Zoning Board of Adjustment. SCE was also recently appointed as the Sanitary Sewer Consulting Engineer. SCE serves as provider of the following consulting services provided to municipal water systems:

- Regulatory compliance – including NJDEP, BPU, EPA, and regulatory agencies.
- System operations and maintenance.
- Attend monthly meetings with Water Committee and other water personnel.
- Assist with and prepare monthly, quarterly, and annual reporting.
- Maintenance of water system construction standards and system mapping.
- Capital improvement budget planning & review of applications for service and service agreements.
- Project Management of various water system improvement projects and special projects relating to supply, distribution, and quality.

Alternate Consulting Engineer – Brick Township Municipal Utilities Authority, County of Ocean, NJ

Client: Brick Township Municipal Utilities Authority

Contact: George Cevasco, Chairman, (732) 458-7000

Dates: 2016 – Present

As Alternate Consulting Engineer for the Township of Brick MUA since 2016, SCE is utilized for performing reviews of public and private water and sewer infrastructure improvements, as well as handling inspections on public work projects and onsite/offsite improvements by public and private entities. Further responsibilities include creating and reviewing estimates for public and private infrastructure projects and conducting surveys for public entities within the Township.

SIMILAR PROJECT EXPERIENCE

ENVIRONMENTAL LSRP SERVICES

Gasoline & Diesel Discharge Remediation - Department of Public Works (DPW), City of Hackensack, County of Bergen, NJ

Client: City of Hackensack
Contact: James Mangin, Chief Financial Officer, (201) 646-3935
Date: November 2018 – 2019

Corrosion holes and gasoline impacted soil and groundwater were observed during the removal of a vapor drop tank. The New Jersey Department of Environmental Protection (NJDEP) was notified and a case number assigned in March 2018. In May 2018, during remedial excavation activities, a diesel discharge was discovered. Post-excavation samples showed concentrations of volatile organic compounds (VOCs) greater than the applicable NJDEP Soil Remediation Standards (SRS). SCE was retained in October 2018 to provide Licensed Site Remediation Professional (LSRP) Services. During investigation activities, benzene above the NJDEP Groundwater Quality Standards (GWQS) was detected in the temporary well points (TWPs). To further investigate the benzene impact, a permanent monitoring well was installed in the benzene impacted area. Groundwater sampling results from the permanent monitoring well indicated that all targeted compounds were below the NJDEP GWQS. Based on the results of soil and groundwater investigation, a Remedial Action Report (RAR) and an Area of Concern (AOC) Remedial Action Outcome (RAO) for the site was issued in 2019.

Johnson Park Pistol Range – Berm Remediation – City of Hackensack, County of Bergen, NJ

Client: City of Hackensack
Contact: James Mangin, Chief Financial Officer, (201) 646-3935
Date: 2019 - Present

SCE was retained in 2019 to provide LSRP and professional engineering services at the former Johnson Park Pistol Range. A remedial investigation of the soil berms was completed and a Remedial Investigation Report (RIR) submitted to the NJDEP. SCE is currently developing a Remedial Action Workplan (RAW) to address lead impacts. Remedial action includes the use of institutional and engineering controls. Upon completion of the remedial action, which includes the installation of a cap, a RAR and Remedial Action Permit (RAP) application will be submitted to the NJDEP.



Firehouse Environmental Remediation – City of Hackensack, County of Bergen, NJ

Client: City of Hackensack
Contact: James Mangin, Chief Financial Officer, (201) 646-3935
Date: 2018 – Present

SCE is providing LSRP services to the City on their Firehouse project, which has been lingering for over 20 years with no understanding of the closure plan or future tasks necessary to gain NJDEP compliance. The initial step of the project was SCE contacting the NJDEP and submitting the documents necessary to establish our office as the LSRP of Record for the site. SCE reviewed the pertinent data associated with the prior investigation and/or remediation tasks to establish an understanding of the environmental situation. SCE developed a remediation plan and submitted a RAW to the NJDEP. Surfactant Injections and Product Recovery events are currently being conducted to remove the product from the subsurface. Once complete, a RAP for Soil and Monitored Natural Attenuation of Groundwater will be submitted to the NJDEP. Upon NJDEP approval, an RAO will be submitted for the site.

SIMILAR PROJECT EXPERIENCE

ENVIRONMENTAL LSRP SERVICES

Asbestos & Lead Based Paint Survey (City Hall Tax Office) – City of Perth Amboy, County of Middlesex, NJ

Client: City of Perth Amboy

Contact: Maria Rivera, Purchasing Agent, (732) 826-0290

Date: 2019

SCE provided services for a lead-based paint and asbestos survey at the Perth Amboy City Hall related to proposed first floor renovations. Services included a lead-based paint inspection of the designated painted components with specific attention to the exposed metal components; a comprehensive asbestos survey pertaining to the proposed first floor renovation scope; and the preparation of a final report. Based on the findings of the survey as documented in the final report and budgetary cost estimate provided, the City contracted services to abate the potential hazards as part of the first-floor renovations which were completed in 2019.



Asbestos Abatement & Fire Sprinkler Installation Project – City of Elizabeth, County of Union, NJ

Client: County of Union

Date: June 2020 - April 2021

SCE provided the County of Union with engineering and environmental services on their Asbestos Abatement and Fire Sprinkler Installation Project. Services included asbestos survey and report, design development, construction documents, and construction phase services. Our environmental team conducted an Asbestos Survey, prepared an Asbestos-Containing Materials (ACM) Survey Report and abatement cost estimate, and has provided the draft Hazardous Material Abatement Technical Specification and Drawings to the Client for distribution with the bid documents.

Morris County Title V Air Permit, Compliance & Management – Township of Hanover, County of Morris, NJ

Client: County of Morris

Contact: David Endly, Building & Grounds, (973) 385-2895

Date: 2019 - 2021

SCE provided the County of Morris (County) with professional environmental engineering services for NJDEP Air Permitting to address violations issued by the NJDEP Division of Air Enforcement. To gain an understanding of the facilities and permit obligations, SCE conducted a site survey of 13 County Facilities located in or around the West Hanover County Complex, to catalogue emission source operations or equipment, equipment specifications, and collect site photographs or any other necessary information. Following the site survey, SCE coordinated and attended a pre-application meeting with NJDEP Air Enforcement to discuss the Notice of Violations (NOVs) and SCE's proposed permitting application. Based on the NJDEP meeting, a Title V Air Permit Application was proposed to satisfy the requirements of the violations for the Hanover Complex and reduce the individual general permits required for the "facility". SCE provided the County with a revised cost proposal to complete the permit application(s) and address the identified corrective actions to satisfy and close the NOV, as required. The Title V Air Permit Application and check were submitted to the NJDEP in early 2020; however, due to COVID-19 and State furloughs, the permit review and approval process was delayed, but still completed prior to close of 2020. Additionally, during the application review period, SCE updated the NJDEP, as necessary, when equipment with a Potential to Emit was installed, replaced, or removed. The Title V Permit was updated again by SCE and the County in early 2021 due to the proposed replacement of emergency generators at the Facility.



SIMILAR PROJECT EXPERIENCE

ENVIRONMENTAL LSRP SERVICES

Former Jersey Plating Facility – Town of Boonton, County of Morris, NJ

Client: Town of Boonton

Contact: Neil Henry, Town Administrator, (973) 402- 9410

Date: July 2008 – 2011

The completed project activities included review of prior work by others, preparation of a Remedial Investigation Workplan (RIW), and implementation of a Remedial Investigation for a former metal plating site in the Town of Boonton. The work involved an intensive assessment of soil and groundwater contamination associated with the former metal plating operations in accordance with the NJDEP and with funding secured by SCE via the Hazardous Discharge Site Remediation Fund (HDSRF). Potential impacts associated with vapor intrusion were assessed in nearby homes and businesses as part of the Remedial Investigation and summarized with other data in a complete RIR. SCE coordinated with the NJDEP for a subsequent phase of deep groundwater evaluation to assess off-site impacts.

Mill Pond Road Landfill – Township of Randolph, County of Morris, NJ

Client: Morris County Municipal Utilities Authority (MCMUA)

Contact: Larry Gindoff, Executive Director (973) 285-8384

Date: 2015 - 2019

SCE provided LSRP oversight for RAPs for the MCMUA. LSRP services included semi-annual site inspections and Biennial Certification Reports as required by the NJDEP. SCE has provided the NJDEP compliance services required to properly oversee, permit, monitor, and report on the protectiveness of the remedial action (i.e., capping) conducted to remediate the soil contamination.

20 Triangle Road - Site Investigation, Remedial Investigation, & Regulatory Reporting - City of New Brunswick, County of Middlesex, NJ

Client: Private Client

Date: March 2023 - Present

SCE is currently providing environmental services for the site investigation, remedial investigation, and NJDEP regulatory reporting at the site, which is a NJDEP known contaminated site under the SRP. The site was previously owned by a chemical company and used as a chemical storage and reprocessing facility, which processed and disposed of various hazardous and non-hazardous chemical wastes without appropriate permits. Operations eventually ceased leaving much of the inventory abandoned, including more than 10,000 drums of hazardous materials, many of which had discharged onto the surface and leached into the soil and shallow groundwater. The drums and approximately 190 tons of significantly impacted surface soil were removed from the site in the early 1980's. SCE is providing the following remedial services on this project:

- Site-specific Health and Safety Plan, Quality Assurance Project Plan, and initial Receptor Evaluation.
- Updating and finalizing the PAR for submittal to NJDEP.
- Overseeing a licensed driller to advance several instigative and delineation soil borings.
- Soil sampling for NJDEP certified laboratory analysis.
- Overseeing the installation and sampling of nine (9) monitoring wells with completion of a Form B Survey Certification for each well installed.
- Ongoing groundwater sampling events quarterly for two (2) years.
- Preparing a SIR, RIR, RAW, and NJDEP forms.
- Wetland delineation and documentation and obtaining NJDEP Letter of Interpretation (LOI) to verify freshwater wetlands and associated transition area.

SIMILAR PROJECT EXPERIENCE

ENVIRONMENTAL PERMITTING SERVICES

Gray Street PFOA Treatment – Borough of Essex Fells, County of Essex, New Jersey

Client: Borough of Essex Fells Date: 2022 - Present
Contact: Francine T. Paserchia, Administrator/Borough Clerk, (973) 226-3400

SCE is currently providing survey, design, permitting, and bid phase services to the Borough of Essex Fells for the Gray Street Perfluorooctanoic Acid (PFOA) Removal Treatment Design. A field survey is being performed for the preparation of base plans which shows topographic features, right-of-way (ROW), and utility information within and adjacent to the project area. Due to the presence of certain regulated features, SCE wetland scientists have delineated the jurisdictional limits of freshwater wetlands and State open waters in accordance with applicable requirements. Additionally, SCE is preparing and submitting an application to the NJDEP for a wetlands Letter of Interpretation (LOI), as well as a Transition Area Waiver and Wetlands General Permit #2. SCE is also preparing and submitting an online application for Flood Hazard Area General Permit-by-Certification #5 to the NJDEP. SCE's services will also include preliminary and final engineering design; preparation and submission of a Bureau of Water System Engineering (BWSE) Permit to Construct and a NJDEP Treatment Works Approval (TWA) application; assistance in applying for funding through the New Jersey Infrastructure Bank; cost estimating; bid phase assistance; and oversight of geotechnical investigation.

Improvements to CR534 Blackwood (Clementon Road) – Township of Gloucester, County of Camden, NJ

Client: County of Camden Date: 2020
Contact: William England, PE, PP, CME, Assistant County Engineer, (856) 549-0770

SCE provided wetland delineation and survey services to the County of Camden for proposed improvements to Blackwood-Clementon Road (CR534). Wetlands were delineated in accordance with the *Federal Manual for Identifying and Delineating Jurisdictional Wetlands* (January 1989) which is the methodology accepted by NJDEP Division of Land Resource Protection (DLRP). The limit of study for the wetland delineation included portions of the existing ROW for Blackwood-Clementon Road and Little Gloucester Road within the Township of Gloucester. The limit of study included the ROW for Blackwood-Clementon Road generally situated between an area approximately 600' west of its intersection with Little Gloucester Road to the west and its intersection with Laurel Road to the east. The limit of study additionally included the ROW along Little Gloucester Road approximately 350' to the north and 550' to the south. Wetlands within approximately 150' of the limit of study were field delineated.



Johnson Park Sports Dome – City of Hackensack, County of Bergen, New Jersey

Client: City of Hackensack Date: 2019 - 2020
Contact: James Mangin, Chief Financial Officer, (201) 646-3935

Survey, design, permitting, and Licensed Site Remediation Professional (LSRP) services were provided by SCE for the Johnson Park Sports Facility Project. Upon review of the available resources for the various regulatory agencies, SCE determined that the following agencies had jurisdiction on this project: NJDEP Bureau of Tidelands Management, NJDEP Waterfront Development, NJDEP Freshwater Wetlands, NJDEP Green Acres, USACE, Bergen County Soil Conservation District, and Bergen County Planning Board. In order to prepare and submit the various applications for the proper permits, SCE conducted research to obtain appropriate mappings, completed a wetland delineation, and compiled relevant forms, figures, maps, photographs, and reports. In addition, SCE worked with the City of Hackensack Attorney in regard to the legal notices and ads that were created and posted.



SIMILAR PROJECT EXPERIENCE

ENVIRONMENTAL PERMITTING SERVICES

Deptford High School Turf Field Improvements – Township of Deptford, County of Gloucester, New Jersey

Client: Deptford Township School District

Date: 2019 - 2020

SCE provided wetland delineation and permitting services to the Deptford Township School District for proposed improvements to the existing football field, running track, and field events at Deptford High School. Wetlands and State open waters were delineated in accordance with the *Federal Manual for Identifying and Delineating Jurisdictional Wetlands (January 1989)* which is the methodology accepted by NJDEP DLRP. The project took place outside of wetlands and State open water, and an application for a LOI was submitted to NJDEP to confirm this understanding. The project occurred within a flood hazard area and riparian zone and required a permit under the *Flood Hazard Area Control Act Rules at NJAC 7:13*. SCE has prepared and submitted a complete application for an Individual Permit under NJAC 7:13 to the NJDEP and has obtained the approved permit and LOI.

Lorraine Well Facility Improvements – Township of Montclair, County of Essex, New Jersey

Client: Township of Montclair Water Bureau & Sewer Utility

Contact: Michael Primavera, Acting Superintendent / Licensed Operator, (973) 744-4600

Date: 2020

SCE provided wetland delineation and permitting services to the Township of Montclair Water Bureau and Sewer Utility for improvements to the Lorraine Well potable water facility. Improvements included the construction of new granular activated carbon (GAC) treatment tanks and an emergency generator adjacent to the existing well house. Wetlands and State open waters were delineated in accordance with the *Federal Manual for Identifying and Delineating Jurisdictional Wetlands (January 1989)* which is the methodology accepted by NJDEP DLRP. The project took place within the 50' wide riparian zone of an onsite watercourse and required a permit under the *Flood Hazard Area Control Act Rules at NJAC 7:13*. SCE prepared and submitted a complete application for an Individual Permit under NJAC 7:13 and has obtained the issued permit.



Well 21 Replacement Engineering Design – Township of Parsippany-Troy Hills, County of Morris, NJ

Client: Township of Parsippany-Troy-Hills

Contact: Sean M. Andres, Sr., Water Superintendent, (973) 263-7108

Date: 2019

SCE provided engineering design, regulatory approvals, and bid phase services. Coordination with the Township of Parsippany-Troy Hills's (Township) hydrogeologic consultant Uhl & Associates, Inc. (Uhl), was required. Well No. 21 is a newer active production well that was producing 700 gallons per minute (gpm), but was originally permitted and capable of yielding 1,400 gpm. The well house is located in a wooded area with access via a direct road off of Springfield Court. The facility is equipped with an existing 200 horsepower vertical turbine pump. The project site is near specific land use constraints including identified deciduous wooded wetlands as well as the Troy Brook that requires permits from the NJDEP DLRP. SCE prepared and submitted an application for a freshwater wetlands LOI, Transition Area Waiver for Redevelopment, and a General Permit #2 for underground utilities.



SIMILAR PROJECT EXPERIENCE

GIS SERVICES

GIS, Engineering, & Wastewater Utility Services – City of Hackensack, County of Bergen, NJ

Client: City of Hackensack

Contact: James A. Mangin, Chief Financial Officer, (201) 646-3935

Dates: 2019 - Present

Software & Equipment: ArcGIS Pro; ArcGIS Online; ArcGIS Survey123; ArcGIS Dashboards; ArcGIS Field Maps; and Centimeter-grade GNSS

SCE implemented the City of Hackensack's (City's) Geographic Information System (GIS) program which is currently being used to map, manage, and analyze the City's trees, land records, flood data, water utilities, wastewater utilities, stormwater utilities, and more. The City's Main Street Rehabilitation Area has been the focus of multiple streetscape improvement projects and combined sewer system separation efforts. SCE's engineering and construction teams utilize GIS to manage these projects and Centimeter-grade Global Navigational Satellite System (GNSS) to map new and existing assets, resulting in real-time collaboration with the City and highly accurate GIS data that can be incorporated into the City's GIS. SCE has provided the City with the following specific GIS projects and capabilities:



Combined Sewer Separation Projects: Existing and newly installed utilities were mapped with centimeter-grade accuracy to create current as-built information which is then imported to the City's overall GIS data. Interactive web mapping applications were prepared that allow the City to view this information in real-time from the field or office.

Federal Emergency Management Agency (FEMA) Hazard Mitigation Grant Program (HMGP): SCE is providing GIS services to the City to advance planning and existing condition evaluation of the sanitary and stormwater infrastructure sewer throughout the Hurricane Ida HMGP conceptual project planning area. GIS was used in the field to track the progress and capture the results of the cleaning and closed-circuit television (CCTV) efforts. Subsurface pipes were digitized into GIS based on flow direction. Pipe material, pipe size, depth to inverts, and more, were integrated into the City's GIS. Video files were attached to associated gravity mains within the City's GIS, allowing City staff to view these videos from the field or office.

Stormwater Infrastructure Mapping and MS4 Compliance: SCE has mapped the City's stormwater system using centimeter-grade GNSS and created data and interactive maps that assist the City with performing inspections and maintenance required by the Tier A MS4 permit. Digital inspection forms for outfalls, catch basins, and more, were created to improve data quality and record keeping while streamlining the process from field to office, including preparation of the annual MS4 report.

Tree Inventory & Management: SCE performed an inventory and inspection of the City's trees using GIS. A Tree Management solution was deployed which allows the City to perform digital inspections and maintenance activities. A dashboard view allows City staff to quickly view and filter information about City trees and related inspections and maintenance activities. This tree management solution has improved collaboration between the Department of Public Works and Shade Tree Commission.



SIMILAR PROJECT EXPERIENCE

GIS SERVICES

GIS for Sanitary Sewer System & Facility – Township of Mount Olive, County of Morris, NJ

Client: Musconetcong Sewerage Authority

Contact: James Schilling, Director, (973) 347-1525

Dates: December 2017 - Present

Software & Equipment: ArcGIS Online; Survey123; Field Maps; and Centimeter-grade GNSS

SCE provided an integrated GIS solution for the Musconetcong Sewerage Authority (MSA). Utilizing Esri's water/wastewater utilities data model, SCE assembled a geodatabase and maps containing all necessary features and attributes of the MSA's underground and aboveground assets. SCE and MSA staff collected all underground and above ground sewer assets using centimeter-grade GNSS equipment linked to a mobile device running the ArcGIS Field Maps mobile application. This highly accurate data allowed MSA to control its utility assets, produce reports, and streamline inspections and maintenance activities in the field. SCE provided training and ongoing support for the GIS system. SCE also worked with MSA staff to create routines and reports, suitable for operational tasks and data record keeping. SCE worked with MSA to collect the location and attributes of the stormwater conveyance system at the treatment facility and integrate to its GIS. SCE configured and deployed an ArcGIS Online organizational account which allows the MSA to visualize assets, generate maps and figures, export formatted reports, and digitally capture the results of inspections and maintenance in the field using mobile devices. SCE is currently assisting the MSA with maintaining and enhancing the existing GIS.



GIS KARST Analysis – Borough of Chester, County of Morris, NJ

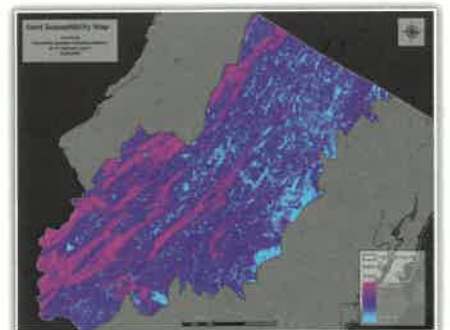
Client: New Jersey Highlands Council

Contact: James Humphries, AICP, PP, Director of Planning and Science, (908) 879-6737

Dates: June 2021 - August 2023

Software & Equipment: ArcGIS Pro; and ArcGIS Online

SCE utilized GIS to analyze the New Jersey Highlands Council's (Council's) region to identify areas that had a higher potential for karst geology. Mapping karst geology provides the Council with the ability to visualize subsurface geology that could impact natural resources, the public, and infrastructure within the Highlands Region. SCE gathered and analyzed applicable data from the public domain including streams, geology, known mine locations, and more. A susceptibility analysis was performed to identify, qualify, compare, and rank sites with potential karst and sinkhole formation. The following parameters were weighted and included in the model: Carbonate Lithology, Soils Drainage, Groundwater Recharge, Distance from Streams, and Distance to Faults. A bare-earth digital elevation model (DEM) analysis was then completed to identify possible sinkhole locations within the Highlands region. The DEM analysis was used to compliment the susceptibility model results and identify potential high-risk areas. Our team then visited a sample of these high risk areas to verify and validate the model results. We utilized digital, location-based inspection forms to document findings in the field. A final geodatabase, formal report, and interactive web mapping applications were created and provided to the Council for future use.



SIMILAR PROJECT EXPERIENCE

GIS SERVICES

Professional GIS Services – City of Douglasville, County of Douglas, GA

Client: City of Douglasville

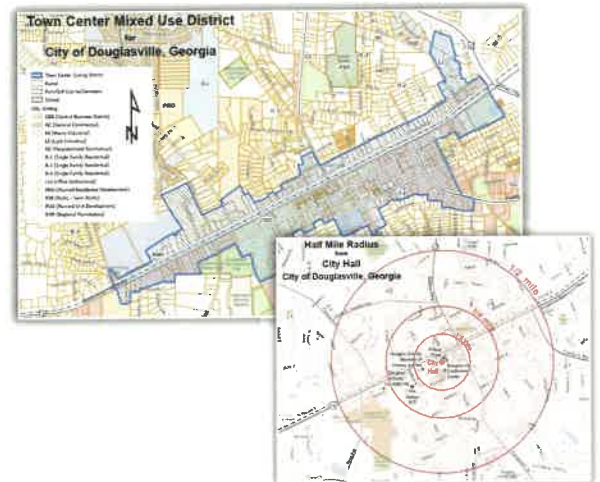
Contact: Shayla Reed, Director of Community Development, (770) 920-3000

Dates: April 2021 - Present

Software & Equipment: ArcGIS Online; and ArcGIS Hub

SCE is currently providing professional GIS Services for the City of Douglasville (City) in the State of Georgia. This project includes the delivery of a full suite of GIS applications that provide City staff and the public with access to critical property, zoning, and land use maps and information. SCE configured, deployed, and maintains the City's ArcGIS Online organizational account. The following web mapping applications (apps) were created to support other aspects of operations in the City's Community Development Department:

- Location and Floodplain Inquiry
- 3D Map Displays
- Facilities Search
- Permit Search
- Code Violations Inquiry



These user-friendly, informative, and interactive web mapping apps were built with Esri's suite of software. The SCE team created a public-facing site for citizens to access maps and information using Esri's ArcGIS Hub. SCE also provided on-site GIS staffing during the initial design and deployment of the City's GIS. Our team continues to provide ongoing GIS training to City staff as needed.

Service Point Audit - Enhanced GIS Data Collection – Five State Territory

Client: Private Client

Dates: May 2018 - Present

Software & Equipment: ArcGIS Online; Field Maps; and Centimeter-grade GNSS

SCE's GIS and Gas Utility Departments are currently completing the final year of a 6-year project to audit and map the location over 450,000 gas and electric service meters in a five (5) state region of Montana, Minnesota, Wyoming, and North and South Dakota. SCE professionals visit each gas and electric meter to collect valuable asset information including meter number, ERT number, customer address, shutoff valve type, riser type, and photographs. SCE then completes a safety and integrity inspection of each meter to verify that there is no meter damage or tampering, service or riser damage, conductor damage, or foreign attachments. The data undergoes rigorous quality assurance and quality control procedures prior to being delivered to the Client on a rolling basis. Our team has achieved a 99% percent acceptance rate of initial data deliverables over the course of this project.



SIMILAR PROJECT EXPERIENCE

GIS SERVICES

Stormwater Infrastructure Mapping & Condition Assessment – Borough of Netcong, County of Morris, NJ

Client: Borough of Netcong

Contact: Ralph Blakeslee, Administrator, (973) 347-0252

Dates: February 2023 - Present

Software & Equipment: ArcGIS Online; Survey123; Field Maps; and Centimeter-grade GNSS

SCE is currently providing professional engineering and GIS services to complete a stormwater infrastructure asset condition assessment for the Borough of Netcong (Borough), in order to address stormwater conveyance issues in various areas. SCE procured and configured an Esri ArcGIS Online organizational account for the Borough as the first step of this project. Our team then prepared a stormwater conveyance GIS data model that aligns with New Jersey Department of Environmental Protection (NJDEP) and United States Environmental Protection Agency (EPA) requirements for mapping municipal separate storm sewer system (MS4). Our team is utilizing the ArcGIS Field Maps and Survey123 mobile applications paired with Centimeter-grade GNSS equipment to map portions of the Borough's stormwater system, from catch basin to outfall, with centimeter grade accuracy. Maps and figures are being created for the Municipal Stormwater Management Plan (MSWMP), sewer cleaning and Closed Circuit Television (CCTV) bid documents, and the Infrastructure Analysis and Assessment Report. Additional services SCE is providing includes:

- CCTV Observation and Construction Administration
- Stormwater Infrastructure Assessment and Analysis
- Funding Assistance - New Jersey Water Infrastructure Investment Plan (WIIP) and Clean Water State Revolving Fund (CWSRF) Financing Program

GIS Services – Township of Washington, County of Morris, NJ

Client: Washington Township Municipal Utilities Authority

Contact: Thomas McAndrew, Executive Director, (908) 876-3145

Dates: July 2022 - Present

Software & Equipment: ArcGIS Online; ArcGIS Pro; ArcGIS Survey123; ArcGIS Field Maps; ArcGIS Dashboards; and Centimeter-grade GNSS

SCE currently provides Professional GIS Services to maintain and enhance the Washington Township Municipal Utilities Authority's (WTMUA) GIS. SCE is assisting WTMUA to leverage GIS to comply with New Jersey's Water Quality Accountability Act (WQAA) and further developing WTMUA's asset management program for the water distribution and sanitary sewer systems. SCE will continue to maintain and enhance WTMUA's GIS system by providing support and training for field data collection, including high accuracy GNSS mapping capabilities, improving data maintenance, reporting and sharing, and providing hands-on training to WTMUA staff who will be using and interacting with the GIS.



SIMILAR PROJECT EXPERIENCE

GIS SERVICES

Moore's Brook Dredging - GIS & CCTV Services – Town of Newton, County of Sussex, NJ

Client: Town of Newton

Contact: Thomas S. Russo, Jr., Town Manager, (973) 383-3521 ext. 224

Dates: November 2023 - October 2024

Software & Equipment: Esri ArcGIS Pro; Esri ArcGIS Online; Esri ArcGIS Field Maps; Esri ArcGIS Survey123; Eos Arrow Gold GNSS Equipment

SCE provided GIS services to map the Town of Newton's (Town) stormwater conveyance infrastructure. SCE procured and configured an Esri ArcGIS Online organizational account for the Town as the first step of this project. Our team then prepared a stormwater conveyance GIS data model that aligns with NJDEP and EPA requirements for mapping municipal separate storm sewer system (MS4). To ensure precision, we employed ArcGIS Field Maps and Survey123 mobile applications alongside centimeter-grade GNSS equipment. This technology allowed us to map the Town's stormwater sewer system infrastructure, including catch basin inlets, manholes, detention/retention basins, swales/ditches, MS4 interconnections, culverts, outfalls, gravity mains, and maintenance yard property boundaries, with centimeter-level accuracy. Additionally, SCE conducted inspections of each outfall using a GIS-based inspection form created with ArcGIS Survey123, focusing on identifying potential illicit discharges or stream scouring related to stormwater outfalls. We also prepared maps and figures for sewer cleaning and closed circuit television (CCTV) bid documents, along with a new GIS-based digital outfall map.



Digitizing the Irvington Stormwater System – Township of Irvington, County of Essex, NJ

Client: Township of Irvington

Contact: John Wiggins, PE, CME, Township Engineer, (973) 399-6696

Dates: November 2023 - Present

Software & Equipment: ArcGIS Pro; ArcGIS Online; and ArcGIS Dashboards

SCE is currently providing professional engineering and GIS services to digitize the Township of Irvington's (Township's) storm sewer system. SCE is utilizing the Township's existing stormwater maps and recent, high-resolution aerial imagery to create a GIS dataset and map of the Township's stormwater system by georeferencing and digitizing the Township's existing stormwater system maps. Georeferencing the stormwater system to the New Jersey State Plane Coordinate System (NJSPCS) will allow the stormwater system data to be overlaid with other GIS data such as the Township's sanitary sewer system, as well as data from the public domain, such as parcels, FEMA flood hazard data, land use/land cover, and more. SCE is utilizing Esri's stormwater system data model to build the Township's stormwater asset inventory and mapping, including outfalls, ground water discharge points, interconnections, storm drain inlets, manholes, conveyance, pump stations, stormwater facilities, and property boundaries of maintenance yards and other ancillary operations. Mapping the stormwater system aligns with NJDEP and EPA requirements for mapping municipal separate storm sewer system (MS4). Once complete, SCE will prepare a map book of the Township's stormwater infrastructure. The map book will include an overview key sheet of the Township and individual detail sheets which will include a reference basemap including water bodies, municipal boundaries, streets and more. Additionally, pipe material, pipe size, and invert elevations will be included in the GIS data and labelled on the map.



SIMILAR PROJECT EXPERIENCE

GIS SERVICES

Meter Replacement Program – Township of Parsippany-Troy Hills, County of Morris, NJ

Client: Township of Parsippany-Troy Hills

Contact: Sean Andres, Sr., Water Superintendent, (973) 263-7108

Dates: November 2022 - Present

Software & Equipment: ArcGIS Pro; ArcGIS Online; and ArcGIS Dashboards

SCE is currently providing GIS Integration and Data Quality Assurance/Quality Control (QA/QC) services to the Township of Parsippany-Troy Hills (Township) for Phase I of their Meter Replacement Program. This phase of the program includes replacement of approximately 5,310 existing water meters of sizes ranging 5/8-inch (5/8") to 1". SCE's GIS mapping and data management services include updating the Township's water system geodatabase, specific to the meter replacement and maintenance progress on a weekly basis. This work includes gathering and entering information related to the Contractor's construction progress and cataloguing the aforementioned information as a comprehensive update to the Township's GIS. The information being catalogued into GIS includes meter location, customer name, address, meter number, account number, and as-built photographs. SCE is working with Township staff to identify and fill any data gaps that currently exist within the water distribution GIS, specific to customer water meter information, to the best extent possible. By further developing the asset inventory and GIS, the Township will improve access to their customer account information. SCE developed an interactive web based project status dashboard that allows the Township to track the progress of the meter replacement program. The dashboard includes an interactive map that displays the location of planned and completed meter replacements; filters that allow the Township to view meters that were replaced during a specific date range; and key performance indicators including total number of planned meter replacements, completed meter replacements, and percent of meters replaced.



7

CLIENT REFERENCES



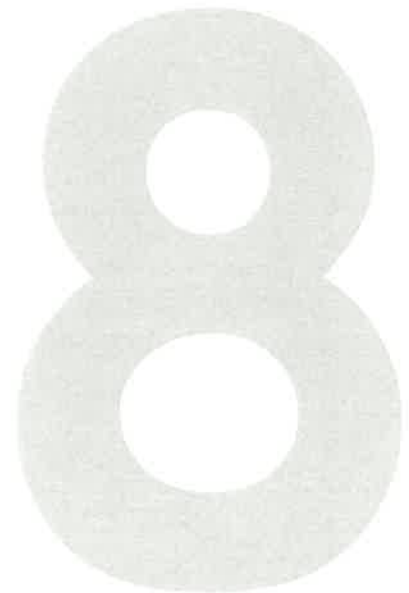
CLIENT REFERENCES

CONTACT:	COMPANY:	TELEPHONE:
Neil Henry Administrator	Town of Boonton 100 Washington Street Boonton, New Jersey 07005	(973) 402-9460
Richard Phelan Business Administrator	Town of Clinton 43 Leigh Street Clinton, New Jersey 08809	(908) 735-8616
Bob Carlson Executive Director	Cumberland County Utilities Authority 333 Water Street Bridgeton, New Jersey 08302	(856) 455-7120
Kris Wheaton, PE, PP, BCEE City Engineer	City of Hackensack 120 East Broadway Hackensack, New Jersey 07601	(201) 646-7763
Edward A. Davis Mayor	Borough of Essex Fells 255 Roseland Avenue Essex Fells, New Jersey 07021	(973) 226-3400
Kareem Adeem Director	City of Newark Water & Sewer Dept. 1294 McBride Avenue Little Falls, New Jersey 07424	(973) 733-6303
Thomas McAndrew Executive Director	Washington Township Municipal Utilities Authority 46 East Mill Road Long Valley, New Jersey 07853	(908) 876-3145
Scott J. Macpherson Utility Engineer	Atlantic City Sewerage Company 1200 Atlantic Avenue, Suite 300 Atlantic City, New Jersey 08404	(609) 345-0131
Robert Raymond Superintendent	Bernards Township Sewerage Authority 277 South Maple Avenue Basking Ridge, New Jersey 07920	(908) 204-3020
Robert Bocchino, PE Engineering Manager	Rockaway Valley Regional Sewerage Authority 99 Greenbank Road Boonton, New Jersey 07005	(973) 263-1555
Christopher Vaz Business Administrator	Borough of Seaside Heights 100 Grant Avenue Seaside Heights, New Jersey 08751	(732) 793-9100



8

REQUIRED
FORMS & CERTIFICATIONS



MORRIS COUNTY MUA

Administrative Documents

A. Please submit the following documents with your response to the RFP

Owner's Checkmarks		Bidder's Initials
X	Statement of Ownership Disclosure	LEF
X	Non-Collusion Affidavit	LEF
X	Disclosure of Investment Activities In Iran	LEF
X	Certification of Non-Involvement in Prohibited Activities in Russia or Belarus	LEF
X	Affidavit of Non-Debarred Status	LEF
X	Affirmative Action Compliance Notice	LEF
X	Mandatory EEO Language	LEF
X	Americans with Disability Act of 1990 Form	LEF
X	Anti-Discrimination Requirements	LEF
X	Pay to Play Advisory Notice	LEF
X	Certificate of Employee Information Report/AA-302	LEF
X	W-9	LEF
X	New Jersey Business Registration Certificate	LEF
X	Proposal (document not provided)	LEF

MORRIS COUNTY MUA

Statement of Ownership Disclosure

N.J.S.A. 52:25-24.2 (P.L. 1977, c.33, as amended by P.L. 2016, c.43)

This statement shall be completed, certified to, and included with all bid and proposal submissions. Failure to submit the required information with the bid is cause for automatic rejection of the bid or proposal.

Name of Organization: Suburban Consulting Engineers, Inc.

Organization Address: 96 US Highway 206, Suite 101, Flanders, New Jersey 07836

Part I Check the box that represents the type of business organization:

- Sole Proprietorship (skip Parts II and III, execute certification in Part IV)
- Non-Profit Corporation (skip Parts II and III, execute certification in Part IV)
- For-Profit Corporation (any type) Limited Liability Company (LLC)
- Partnership Limited Partnership Limited Liability Partnership (LLP)
- Other (be specific): _____

Part II

- The list below contains the names and addresses of all stockholders in the corporation who own 10 percent or more of its stock, of any class, or of all individual partners in the partnership who own a 10 percent or greater interest therein, or of all members in the limited liability company who own a 10 percent or greater interest therein, as the case may be. **(COMPLETE THE LIST BELOW IN THIS SECTION)**

OR

- No one stockholder in the corporation owns 10 percent or more of its stock, of any class, or no individual partner in the partnership owns a 10 percent or greater interest therein, or no member in the limited liability company owns a 10 percent or greater interest therein, as the case may be. **(SKIP TO PART IV)**

(Please attach additional sheets if more space is needed):

Name of Individual or Business Entity	Address
Reyna M. Burger Joseph D. Phil	40 Ridge Road, Succasunna, NJ 07876 40 Richard Drive, Mt. Arlington, NJ 07856
Erin B. Abline	8 Evergreen Avenue, Wharton, NJ 07885
Kevin P. Campbell	137 Roseville Road, Byram NJ 07821
Leann E. Fetcho	14 Wellington Drive, Long Valley, NJ 07853

MORRIS COUNTY MUA

Statement of Ownership Disclosure

Part III DISCLOSURE OF 10% OR GREATER OWNERSHIP IN THE STOCKHOLDERS, PARTNERS OR LLC MEMBERS LISTED IN PART II

If a bidder has a direct or indirect parent entity which is publicly traded, and any person holds a 10 percent or greater beneficial interest in the publicly traded parent entity as of the last annual federal Security and Exchange Commission (SEC) or foreign equivalent filing, ownership disclosure can be met by providing links to the website(s) containing the last annual filing(s) with the federal Securities and Exchange Commission (or foreign equivalent) that contain the name and address of each person holding a 10% or greater beneficial interest in the publicly traded parent entity, along with the relevant page numbers of the filing(s) that contain the information on each such person. **Attach additional sheets if more space is needed.**

Website (URL) containing the last annual SEC (or foreign equivalent) filing	Page #'s

Please list the names and addresses of each stockholder, partner or member owning a 10 percent or greater interest in any corresponding corporation, partnership and/or limited liability company (LLC) listed in Part II other than for any publicly traded parent entities referenced above. **The disclosure shall be continued until names and addresses of every noncorporate stockholder, and individual partner, and member exceeding the 10 percent ownership criteria established pursuant to N.J.S.A. 52:25-24.2 has been listed. Attach additional sheets if more space is needed.**

Stockholder/Partner/Member and Corresponding Entity Listed in Part II	Address

Part IV Certification

I, being duly sworn upon my oath, hereby represent that the foregoing information and any attachments thereto to the best of my knowledge are true and complete. I acknowledge: that I am authorized to execute this certification on behalf of the bidder/proposer; that the **Morris County Municipal Utilities Authority** is relying on the information contained herein and that I am under a continuing obligation from the date of this certification through the completion of any contracts with **Morris County Municipal Utilities Authority** to notify the **Morris County Municipal Utilities Authority** in writing of any changes to the information contained herein; that I am aware that it is a criminal offense to make a false statement or misrepresentation in this certification, and if I do so, I am subject to criminal prosecution under the law and that it will constitute a material breach of my agreement(s) with the, permitting the **Morris County Municipal Utilities Authority** to declare any contract(s) resulting from this certification void and unenforceable.

Full Name (Print):	Leann E. Fetcho	Title:	Assistant Corporate Secretary
Signature:		Date:	1/9/2025

MORRIS COUNTY MUA

Non-Collusion Affidavit

STATE OF NEW JERSEY

MORRIS COUNTY MUNICIPAL UTILITIES AUTHORITY ss:

I certify that I am Leann E. Fetcho - Assistant Corporate Secretary

of the firm of Suburban Consulting Engineers, Inc.

the Respondent making this Proposal for the bid or proposal for the above named project, that I executed the said proposal with full authority to do so; that said bidder has not, directly or indirectly entered into any agreement, participated in any collusion in connection with the above named project; and that all statements contained in said proposal and this affidavit are true, correct, and made with full knowledge that the Morris County Municipal Utilities Authority relies upon the truth of the statements contained in said Proposals and in the statements contained in this affidavit in awarding the contract for the said project.

I further warrant that no person or selling agency has been employed or retained to solicit or secure such contract upon an agreement or understanding for a commission, percentage, brokerage, or contingent fee, except bona fide employees or bona fide established commercial or selling agencies.

Signature of Representative: 

Leann E. Fetcho - Assistant Corporate Secretary

Subscribed and sworn to before me this 9 day of January, 2025

Print Name of Affiant: Nichol Hintikka

Notary Public of _____

My commission expires _____

NICHOL T. HINTIKKA
Notary Public, State of New Jersey
Comm. # 50224918
My Commission Expires 8/27/2029



MORRIS COUNTY MUA

Disclosure of Investment Activities in Iran

Pursuant to Public Law 2012, c. 25, any person or entity that submits a bid or proposal or otherwise proposes to enter into or renew a contract must complete the certification below to attest, under penalty of perjury, that the person or entity, or one of the person or entity's parents, subsidiaries, or affiliates, is not identified on a list created and maintained by the Department of the Treasury as a person or entity engaging in investment activities in Iran. If the Director finds a person or entity to be in violation of the principles which are the subject of this law, s/he shall take action as may be appropriate and provided by law, rule or contract, including but not limited to, imposing sanctions, seeking compliance, recovering damages, declaring the party in default and seeking debarment or suspension of the person or entity.

I certify, pursuant to Public Law 2012, c. 25, that the person or entity listed for which I am authorized to bid/renew:

Bidder/Offeror: _____

- is not providing goods or services of \$20,000,000 or more in the energy sector of Iran, including a person or entity that provides oil or liquefied natural gas tankers, or products used to construct or maintain pipelines used to transport oil or liquefied natural gas, for the energy sector of Iran; is not a financial institution that extends \$20,000,000 or more in credit to another person or entity, for 45 days or more, if that person or entity will use the credit to provide goods or services in the energy sector in Iran.

In the event that a person or entity is unable to make the above certification because it or one of its parents, subsidiaries, or affiliates has engaged in the above-referenced activities, a detailed, accurate and precise description of the activities must be provided in part 2 below to the Division of Purchase under penalty of perjury. Failure to provide such will result in the proposal being rendered as non-responsive and appropriate penalties, fines and/or sanctions will be assessed as provided by law.

PART 2: PLEASE PROVIDE FURTHER INFORMATION RELATED TO INVESTMENT ACTIVITIES IN IRAN

You must provide, accurate and precise description of the activities of the bidding person/entity, or one of its parents, subsidiaries or affiliates, engaging in the investment activities in Iran outlined above by completing the boxes below.

Name: _____ Relationship to Bidder/Offeror: _____

Description of Activities: _____

Duration of Engagement: _____ Anticipated Cessation Date: _____

Bidder/Offeror Contact Name: _____ Contact Phone Number: _____

Certification: I, being duly sworn upon my oath, hereby represent and state that the foregoing information and any attachments thereto to the best of my knowledge are true and complete. I attest that I am authorized to execute this certification on behalf of the above-referenced person or entity. I acknowledge that Town/ Township/ Borough/Government Agency is relying on the information contained herein and thereby acknowledge that I am under a continuing obligation from the date of this certification through the completion of any contracts with the MCMUA to notify the MCMUA in writing of any changes to the answers of information contained herein. I acknowledge that I am aware that it is a criminal offense to make a false statement or misrepresentation in this certification, and if I do so, I recognize that I am subject to criminal prosecution under the law and that it will also constitute a material breach of my agreement(s) with Morris County Municipal Utilities Authority, New Jersey and that the MCMUA at its option may declare any contract(s) resulting from this certification void and unenforceable.

Full Name (Print): Leann E. Fetcho Signature: 

Title: Assistant Corporate Secretary Date: 1/9/2025

MORRIS COUNTY MUA

Certification of Non-Involvement in Prohibited Activities in Russia or Belarus

Pursuant to N.J.S.A. 52:32-60.1, et seq. and N.J.S.A.40A:11-2.2 (L. 2022, c. 3) any person or entity (hereinafter "Vendor") that seeks to enter into or renew a contract with a local contracting unit subject to the Local Public Contracts Law for the provision of goods or services, or the purchase of bonds or other obligations, must complete the certification below indicating whether or not the Vendor is identified on the Office of Foreign Assets Control (OFAC) Specially Designated Nationals and Blocked Persons list, available here: <https://sanctionssearch.ofac.treas.gov/>. If the Department of the Treasury finds that a Vendor has made a certification in violation of the law, it shall take any action as may be appropriate and provided by law, rule or contract, including but not limited to, imposing sanctions, seeking compliance, recovering damages, declaring the party in default and seeking debarment or suspension of the party.

I, the undersigned, certify that I have read the definition of "Vendor" below, and have reviewed the Office of Foreign Assets Control (OFAC) Specially Designated Nationals and Blocked Persons list, and having done so certify

(Check the Appropriate Box)



- A. That the Vendor is not identified on the [OFAC Specially Designated Nationals and Blocked Persons list on account of activity related to Russia and/or Belarus](#).

OR



- B. That I am unable to certify as to "A" above, because the Vendor is identified on the [OFAC Specially Designated Nationals and Blocked Persons list on account of activity related to Russia and/or Belarus](#).

OR



- C. That I am unable to certify as to "A" above, because the Vendor is identified on the [OFAC Specially Designated Nationals and Blocked Persons list](#). However, the Vendor is engaged in activity related to Russia and/or Belarus consistent with federal law, regulation, license or exemption. A detailed description of how the Vendor's activity related to Russia and/or Belarus is consistent with federal law is set forth below.

(Attach Additional Sheets If Necessary.)


Signature of Vendor's Authorized Representative

Leann E. Fetcho - Assistant Corporate Secretary
Print Name and Title of Vendor's Authorized Representative

Suburban Consulting Engineers, Inc.
Vendor's Name

96 US Highway 206, Suite 101
Vendor's Address (Street Address)

Flanders, New Jersey 07836
Vendor's Address (City/State/Zip Code)

1/9/2025
Date

22-2750971
Vendor's FEIN

(973) 398-1776
Vendor's Phone Number

(973) 398-2121
Vendor's Fax Number

marketing@suburbanconsulting.com
Vendor's Email Address

ⁱ Vendor means: (1) A natural person, corporation, company, limited partnership, limited liability partnership, limited liability company, business association, sole proprietorship, joint venture, partnership, society, trust, or any other nongovernmental entity, organization, or group; (2) Any governmental entity or instrumentality of a government, including a multilateral development institution, as defined in Section 1701(c)(3) of the International Financial Institutions Act, 22 U.S.C. 262r(c)(3); or (3) Any parent, successor, subunit, direct or indirect subsidiary, or any entity under common ownership or control with, any entity described in paragraph (1) or (2).

MORRIS COUNTY MUA

Affidavit of Non-Debarred Status

AFFIDAVIT OF NON-DEBARRED STATUS

STATE OF NEW JERSEY)
) SS:
COUNTY OF Morris)

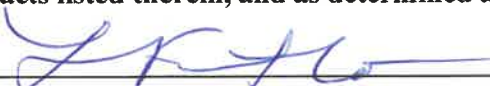
I, Leann E. Fetcho of the City/Town of
Washington, in the County of Morris
and the State of New Jersey, of full age, being duly sworn according to law on my
oath depose and say that:

I am Leann E. Fetcho, a Assistant Corporate Secretary
(Name) (Title, Position, etc.)
of Suburban Consulting Engineers, Inc., the Bidder
(Name of Firm, Company or Corporation)

making the Bid for the Morris County Municipal Utilities Authority and that I executed the said Bid with full authority so to do; that said Bidder at the time of making this Bid is not included on the State of New Jersey, State Treasurer's List of Debarred, Suspended and Disqualified Bidders; and all statements contained in said Bid and in this affidavit are true and correct and made with the full knowledge that the Morris County Municipal Utilities Authority relies upon the truth of the statements contained in said Bid and in the Statements contained in this affidavit in awarding Contract for said project.

The undersigned further warrants that should the name of the firm, company or corporation making this Bid appear on the State Treasurer's List of Debarred, Suspended and Disqualified Bidders at anytime prior to, and during the life of the Contract, including the Guarantee Period, that the Morris County Municipal Utilities Authority shall be immediately so notified by the signatory to this Eligibility Affidavit.

The undersigned understands that the firm, company or corporation making the Bid as a CONTRACTOR is subject to debarment, suspension and/or disqualification in contracting with the State of New Jersey and the Department of Environmental Protection if the CONTRACTOR, pursuant to NJAC 7:1-5.2, commits any of the acts listed therein, and as determined according to applicable law and regulation.


(Signature of Bidder)

Leann E. Fetcho - Assistant Corporate Secretary
(Printed or Typed Name & Title of Bidder)

96 US Highway 206, Suite 101, Flanders, New Jersey 07836
(Address of Bidder)

(Seal if Corporation)

MORRIS COUNTY MUA

Affirmative Action Compliance Notice

EXHIBIT A

GOODS, GENERAL SERVICES, AND PROFESSIONAL SERVICES CONTRACTS

This form is a summary of the successful vendor's requirement to comply with the requirements of N.J.S.A. 10:5-31 and N.J.A.C. 17:27.

The successful respondent shall submit to the public agency, after notification of award but prior to execution of the contract, one of the following three documents as forms of evidence:

1. Letter of Federal Affirmative Action Plan Approval
2. Certificate of Employee Information Report
3. A photocopy of an Employee Information Report (AA302) provided by the Division and distributed to the public agency to be completed by the vendor in accordance with N.J.A.C. 17:27-4.

The successful vendor(s) must submit the copies of the AA302 Report to the Division of Contract Compliance and Equal Employment Opportunity in Public Contracts (Division). The Public Agency copy is submitted to the public agency, and the vendor copy is retained by the vendor.

The undersigned vendor further understands that his/her proposal shall be rejected as non-responsive if said vendor fails to comply with the requirements of N.J.S.A. 10:5-31 et seq. and N.J.A.C. 17:27.

Business Name: Suburban Consulting Engineers, Inc.

Representative's Name (print): Leann E. Fetcho - Assistant Corporate Secretary

Representative's Signature:



Date: 1/9/2025

Phone: (973) 398-1776

Certification **13480**

CERTIFICATE OF EMPLOYEE INFORMATION REPORT RENEWAL

This is to certify that the contractor listed below has submitted an Employee Information Report pursuant to N.J.A.C. 17:27-1.1 et. seq. and the State Treasurer has approved said report. This approval will remain in effect for the period of **15-Feb-2024** to **15-Feb-2027**

**SUBURBAN CONSULTING ENGINEERS, IN
96 US HIGHWAY 206, SUITE 101
FLANDERS NJ 07836**



Elizabeth Maher Muoio
ELIZABETH MAHER MUOIO
State Treasurer

MORRIS COUNTY MUA

Mandatory EEO Language

EXHIBIT A

MANDATORY EQUAL EMPLOYMENT OPPORTUNITY LANGUAGE

N.J.S.A. 10:5-31 et seq. (P.L.1975, c.127)

N.J.A.C. 17:27 et seq.

GOODS, GENERAL SERVICES, AND PROFESSIONAL SERVICES CONTRACTS

During the performance of this contract, the contractor agrees as follows:

The contractor or subcontractor, where applicable, will not discriminate against any employee or applicant for employment because of age, race, creed, color, national origin, ancestry, marital status, affectional or sexual orientation, gender identity or expression, disability, nationality or sex. Except with respect to affectional or sexual orientation and gender identity or expression, the contractor will ensure that equal employment opportunity is afforded to such applicants in recruitment and employment, and that employees are treated during employment, without regard to their age, race, creed, color, national origin, ancestry, marital status, affectional or sexual orientation, gender identity or expression, disability, nationality or sex.

Such equal employment opportunity shall include, but not be limited to the following: employment, upgrading, demotion, or transfer; recruitment or recruitment advertising; layoff or termination; rates of pay or other forms of compensation; and selection for training, including apprenticeship.

The contractor agrees to post in conspicuous places, available to employees and applicants for employment, notices to be provided by the Public Agency Compliance Officer setting forth provisions of this nondiscrimination clause.

The contractor or subcontractor, where applicable will, in all solicitations or advertisements for employees placed by or on behalf of the contractor, state that all qualified applicants will receive consideration for employment without regard to age, race, creed, color, national origin, ancestry, marital status, affectional or sexual orientation, gender identity or expression, disability, nationality or sex.

The contractor or subcontractor will send to each labor union, with which it has a collective bargaining agreement, a notice, to be provided by the agency contracting officer, advising the labor union of the contractor's commitments under this chapter and shall post copies of the notice in conspicuous places available to employees and applicants for employment.

The contractor or subcontractor, where applicable, agrees to comply with any regulations promulgated by the Treasurer pursuant to N.J.S.A. 10:5-31 et seq., as amended and supplemented from time to time and the Americans with Disabilities Act.

The contractor or subcontractor agrees to make good faith efforts to meet targeted county employment goals established in accordance with N.J.A.C. 17:27-5.2.

MORRIS COUNTY MUA

Mandatory EEO Language

The contractor or subcontractor agrees to inform in writing its appropriate recruitment agencies including, but not limited to, employment agencies, placement bureaus, colleges, universities, and labor unions, that it does not discriminate on the basis of age, race, creed, color, national origin, ancestry, marital status, affectional or sexual orientation, gender identity or expression, disability, nationality or sex, and that it will discontinue the use of any recruitment agency which engages in direct or indirect discriminatory practices.

The contractor or subcontractor agrees to revise any of its testing procedures, if necessary, to assure that all personnel testing conforms with the principles of job related testing, as established by the statutes and court decisions of the State of New Jersey and as established by applicable Federal law and applicable Federal court decisions.

In conforming with the targeted employment goals, the contractor or subcontractor agrees to review all procedures relating to transfer, upgrading, downgrading and layoff to ensure that all such actions are taken without regard to age, race, creed, color, national origin, ancestry, marital status, affectional or sexual orientation, gender identity or expression, disability, nationality or sex, consistent with the statutes and court decisions of the State of New Jersey, and applicable Federal law and applicable Federal court decisions. The contractor shall submit to the public agency, after notification of award but prior to execution of a goods and services contract, one of the following three documents:

Letter of Federal Affirmative Action Plan Approval;

Certificate of Employee Information Report; or

Employee Information Report Form AA-302 (electronically provided by the Division and distributed to the public agency through the Division's website at: http://www.state.nj.us/treasury/contract_compliance.)

The contractor and its subcontractors shall furnish such reports or other documents to the Division of Purchase & Property, CCAU, EEO Monitoring Program as may be requested by the office from time to time in order to carry out the purposes of these regulations, and public agencies shall furnish such information as may be requested by the Division of Purchase & Property, CCAU, EEO Monitoring Program for conducting a compliance investigation pursuant to N.J.A.C. 17:27-1.1 et seq

Business Name: Suburban Consulting Engineers, Inc.

Representative's Name (print): Leann E. Fetcho - Assistant Corporate Secretary

Representative's Signature:



Date: 1/9/2025

MORRIS COUNTY MUA

Americans with Disabilities Act of 1990 Form

The CONTRACTOR and the OWNER do hereby agree that the provisions of Title 11 of the Americans With Disabilities Act of 1990 (the "ACT") (42 U.S.C. S12101 et seq.), which prohibits discrimination on the basis of disability by public entities in all services, programs, and activities provided or made available by public entities, and the rules and regulations promulgated pursuant thereto, are made a part of this contract. In providing any act benefit, or service on behalf of the OWNER pursuant to this contract, the CONTRACTOR agrees that the performance shall be in strict compliance with the Act. In the event that the Contractor, its agents, servants, employees, or subcontractors violate or are alleged to have violated the Act during the performance of this contract, the CONTRACTOR shall defend the OWNER in any action or administrative proceeding commenced pursuant to this Act. The Contractor shall indemnify, protect, and save harmless the OWNER, its agents, servants, and employees from and against any and all suits, claims, losses, demands, or damages, of whatever kind or nature arising out of or claimed to arise out of the alleged violation. The CONTRACTOR shall, at its own expense, appear, defend, and pay any and all charges for legal services and any and all costs and other expenses arising from such action or administrative proceeding or incurred in connection therewith. In any and all complaints brought pursuant to the OWNER grievance procedure, the CONTRACTOR agrees to abide by any decision of the OWNER which is rendered pursuant to said grievance procedure. If any action or administrative proceeding results in an award of damages against the OWNER or if the OWNER must any expense to cure a violation of the ADA which has been brought pursuant to its grievance procedure, the CONTRACTOR shall satisfy and discharge the same at its OWN expense.

The OWNER shall, as soon as practicable after a claim has been made against it, give written notice thereof to the CONTRACTOR along with frill and complete particulars of the claim. if any action or administrative proceedings is brought against the OWNER or any of its agents, servants, and employees, the OWNER shall expeditiously forward or have forwarded to the CONTRACTOR every demand, complaint, notice, summons, pleading, or other process received by the OWNER or its representatives.

It is expressly agreed and understood that any approval by the OWNER of the services provided by the CONTRACTOR pursuant to this contract will not relieve the CONTRACTOR of the obligation to comply with the Act and to defend, indemnify, protect, and save harmless the OWNER pursuant to this paragraph.

It is further agreed and understood that the OWNER assumes no obligation to indemnify or save harmless the CONTRACTOR, its agents, servants, employees and subcontractors for any claim which may arise out of their performance of this Agreement. Furthermore, the CONTRACTOR expressly understands and agrees that the provisions of this indemnification clause shall in no way limit the CONTRACTOR'S obligations assumed in this Agreement, nor shall they be construed to relieve the CONTRACTOR from any liability, nor preclude the OWNER from taking any other actions available to it under any other provisions of the Agreement or otherwise at law.

Furthermore, the contractor expressly understands and agrees that the provisions of this indemnification clause shall in no way limit the contractor's obligations assumed in this Agreement, nor shall they be construed to relieve the contractor from any liability, nor preclude the owner from taking any other actions available to it under any other provisions of the Agreement or otherwise at law.

Business Name (Print): Suburban Consulting Engineers, Inc.

Representative's Name (Print): Leann E. Fetcho

Representative's Title: Assistant Corporate Secretary

Representative's Signature:



Phone: (973) 398-1776

Date: 1/9/2025

MORRIS COUNTY MUA

New Jersey Anti-Discrimination

Pursuant to N.J.S.A. 10:2-1:

- a. In the hiring of persons for the performance of work under this contract or any subcontract hereunder, or for the procurement, manufacture, assembling or furnishing of any such materials, equipment, supplies or services to be acquired under this contract, no contractor, nor any person acting on behalf of such contractor or subcontractor, shall, by reason of race, creed, color, national origin, ancestry, marital status, gender identity or expression, affectional or sexual orientation or sex, discriminate against any person who is qualified and available to perform the work to which the employment relates;
- b. No contractor, subcontractor, nor any person on his behalf shall, in any manner, discriminate against or intimidate any employee engaged in the performance of work under this contract or any subcontract hereunder, or engaged in the procurement, manufacture, assembling or furnishing of any such materials, equipment, supplies or services to be acquired under such contract, on account of race, creed, color, national origin, ancestry, marital status, gender identity or expression, affectional or sexual orientation or sex;
- c. There may be deducted from the amount payable to the contractor by the contracting public agency, under this contract, a penalty of \$ 50.00 for each person for each calendar day during which such person is discriminated against or intimidated in violation of the provisions of the contract; and
- d. This contract may be canceled or terminated by the contracting public agency, and all money due or to become due hereunder may be forfeited, for any violation of this section of the contract occurring after notice to the contractor from the contracting public agency of any prior violation of this section of the contract.

Business Name (Print): Suburban Consulting Engineers, Inc.

Representative's Name (Print): Leann E. Fetcho

Representative's Title: Assistant Corporate Secretary

Representative's Signature:



Phone: (973) 398-1776

Date: 1/9/2025

MORRIS COUNTY MUA

Pay to Play Advisory

PAY TO PLAY ADVISORY

**Disclosure Requirement
(N.J.S.A. 19:44A – 20.27)**

Any business entity that has received \$50,000 or more in contracts from government entities in a calendar year will be required to file an annual disclosure report with ELEC.

The report will include certain contributions and contract information for the current calendar year.

At a minimum, a list of all business entities that file an annual disclosure report will be listed on ELEC's website at www.elec.state.nj.us.

If you have any questions please contact ELEC at:
1-888-313-ELEC (toll free in NJ) or
609-292-8700

An analyst from ELEC's Special Programs Section will assist you.

Initials

LEF



**STATE OF NEW JERSEY
BUSINESS REGISTRATION CERTIFICATE**

Taxpayer Name: SUBURBAN CONSULTING ENGINEERS INC.

Trade Name:

Address: 96 US HIGHWAY 206, SUITE 101
FLANDER, NJ 07836

Certificate Number: 0074521

Effective Date: December 08, 2005

Date of Issuance: January 05, 2016

For Office Use Only:

20160105091711667

EXECUTIVE ORDER NO. 151 REQUIREMENTS

It is the policy of the Division of Purchase and Property that its contracts should create a workforce that reflects the diversity of the State of New Jersey. Therefore, contractors engaged by the Division of Purchase and Property to perform under a construction contract shall put forth a good faith effort to engage in recruitment and employment practices that further the goal of fostering equal opportunities to minorities and women.

The contractor must demonstrate to the Division of Purchase and Property's satisfaction that a good faith effort was made to ensure that minorities and women have been afforded equal opportunity to gain employment under the Division of Purchase and Property's contract with the contractor. Payment may be withheld from a contractor's contract for failure to comply with these provisions.

Evidence of a "good faith effort" includes, but is not limited to:

1. The Contractor shall recruit prospective employees through the State Job bank website, managed by the Department of Labor and Workforce Development, available online at <http://NJ.gov/JobCentralNJ>;
2. The Contractor shall keep specific records of its efforts, including records of all individuals interviewed and hired, including the specific numbers of minorities and women;
3. The Contractor shall actively solicit and shall provide the Division of Purchase and Property with proof of solicitations for employment, including but not limited to advertisements in general circulation media, professional service publications and electronic media; and
4. The Contractor shall provide evidence of efforts described at 2 above to the Division of Purchase and Property no less frequently than once every 12 months.
5. The Contractor shall comply with the requirements set forth at N.J.A.C. 17:27.

This language is in addition to and does not replace good faith efforts requirements for construction contracts required by N.J.A.C. 17:27-3.6, 3.7 and 3.8, also known as Exhibit B.



JOIN FORCES. SUCCEED TOGETHER.

hereby grants

National Women's Business Enterprise Certification

to

SUBURBAN CONSULTING ENGINEERS INC

who has successfully met WBENC's standards as a Women's Business Enterprise (WBE).
This certification affirms the business is woman-owned, operated and controlled and is valid through the date herein.

WBENC National WBE Certification was processed and validated by Women's Business Enterprise Council Metro NY, a WBENC Regional Partner Organization.

Certification Granted: April 8, 2022
Expiration Date: April 8, 2025
WBENC National Certification Number: WBE2200810

NAICS: 541330, 541320, 541370
UNSPSC: 72102906, 81100000, 81101517, 81101526, 81111709, 81151604

Sandra Eberhard, President & CEO Women's Business Enterprise Council Metro NY





State of New Jersey

DEPARTMENT OF THE TREASURY
DIVISION OF REVENUE & ENTERPRISE SERVICES
P.O. BOX 026
TRENTON, NJ 08625-026
PHONE: 609-292-2146 FAX: 609-984-6679

PHIL MURPHY
Governor

TAHESHA WAY, ESQ.
Lt. Governor

ELIZABETH MAHER MUOIO
State Treasurer

5-YEAR RECERTIFICATION

APPROVED

under the

Minority and Women Business Certification Program

This certificate acknowledges SUBURBAN CONSULTING ENGINEERS INC. as a Certified Women Business Enterprise (WBE) that has met the criteria established by N.J.A.C. 17:46.

In order for this certification to remain in effect **throughout the 5 year certification period**, the business **must submit annual verification statements** attesting that there has been no change in ownership, control, or any other factor of the business affecting eligibility for certification as a minority or women-owned business. The verification statements must be submitted **not more than 60 days** prior to the anniversary of the certification approval.

If the business fails to submit the annual verification statement by the anniversary date, or a renewal by its expiration date, the certification will lapse and the business will be removed from the system (SAVI) that lists certified minority and women-owned businesses. If the business seeks to be certified again, it will have to reapply by submitting a new application.



Peter Lowicki
Deputy Director

Issued: 6/27/2024

Certification Number: A0483-43

*Expiration: 6/27/2029

*As noted above, in order to maintain its certification status, the business must submit verification statements for each of the five years.

THIS DOCUMENT IS PRINTED ON WATERMARKED PAPER, WITH A MULTI-COLORED BACKGROUND AND MULTIPLE SECURITY FEATURES. PLEASE VERIFY AUTHENTICITY.

**State Of New Jersey
New Jersey Office of the Attorney General
Division of Consumer Affairs**

THIS IS TO CERTIFY THAT THE
BOARD OF PROF. ENGINEERS & LAND SURVEYORS

HAS CERTIFIED

SUBURBAN CONSULTING ENGINEERS, INC.
ERIN B ABLINE
96 U.S. Highway 206
Attn: Leann Phil
Flanders NJ 07836

FOR PRACTICE IN NEW JERSEY AS A(N): Certificate of Authorization

Engineering & Land Surveying

08/16/2024 TO 08/31/2028
VALID

Erin Ablino

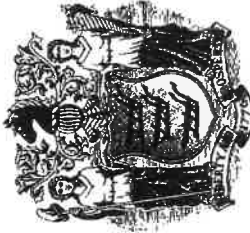
Signature of Licensee/Registrant/Certificate Holder

24GA28037500

LICENSE/REGISTRATION/CERTIFICATION #

Cari Zais

ACTING DIRECTOR



New Jersey Office of the Attorney General
Division of Consumer Affairs

New Jersey State Board of Architects

Certificate of Authorization for Landscape Architecture

Whereas,

SUBURBAN CONSULTING ENGINEERS, INC

has met the requirements to provide landscape architectural services in the State of New Jersey pursuant to N.J.S.A. 45:3A-16 and has designated


**JOSEPH D PERELLO, LANDSCAPE ARCHITECT
LICENSE NO. AS000666**

as the licensee in responsible charge.

Now, therefore,

**SUBURBAN CONSULTING ENGINEERS, INC
CERTIFICATE OF AUTHORIZATION No. MH000042**

is hereby authorized to provide landscape architectural services in the State of New Jersey commencing forthwith and for terms which are renewable biennially in May of odd-numbered years.


Michael G. Soriano, President


Charles F. Kirk, Acting Executive Director

**State Of New Jersey
New Jersey Office of the Attorney General
Division of Consumer Affairs**

THIS IS TO CERTIFY THAT THE
Board of Architects

HAS LICENSED

SUBURBAN CONSULTING ENGINEERS INC
JOSEPH PERELLO
96 U.S. Highway 206 - Ste 101
Flanders NJ 07836

FOR PRACTICE IN NEW JERSEY AS A(N): Certificate of Authorization

New Jersey Office of the Attorney General
Division of Consumer Affairs
THIS IS TO CERTIFY THAT THE
Board of Architects
HAS LICENSED
SUBURBAN CONSULTING ENGINEERS INC
Certificate of Authorization

04/21/2023 TO 05/31/2025
VALID

SIGNATURE

Cari Zois
ACTING DIRECTOR

21MH00004200

License/Registration/Certificate #

04/21/2023 TO 05/31/2025
VALID

Joseph Perello
Signature of Licensee/Registrant/Certificate Holder

21MH00004200
LICENSE/REGISTRATION/CERTIFICATION #

Cari Zois
ACTING DIRECTOR

PLEASE DETACH HERE
IF YOUR LICENSE/REGISTRATION
CERTIFICATE ID CARD IS LOST
PLEASE NOTIFY:
Board of Architects
P.O. Box 45001
Newark, NJ 07101

PLEASE DETACH HERE

Request for Taxpayer Identification Number and Certification

Go to www.irs.gov/FormW9 for instructions and the latest information.

**Give form to the
requester. Do not
send to the IRS.**

Before you begin. For guidance related to the purpose of Form W-9, see *Purpose of Form*, below.

Print or type. <i>See Specific Instructions on page 3.</i>	<p>1 Name of entity/individual. An entry is required. (For a sole proprietor or disregarded entity, enter the owner's name on line 1, and enter the business/disregarded entity's name on line 2.)</p> <p>Suburban Consulting Engineers, Inc.</p>	
	<p>2 Business name/disregarded entity name, if different from above.</p>	
	<p>3a Check the appropriate box for federal tax classification of the entity/individual whose name is entered on line 1. Check only one of the following seven boxes.</p> <p> <input type="checkbox"/> Individual/sole proprietor <input type="checkbox"/> C corporation <input checked="" type="checkbox"/> S corporation <input type="checkbox"/> Partnership <input type="checkbox"/> Trust/estate <input type="checkbox"/> LLC. Enter the tax classification (C = C corporation, S = S corporation, P = Partnership) _____ <i>Note:</i> Check the "LLC" box above and, in the entry space, enter the appropriate code (C, S, or P) for the tax classification of the LLC, unless it is a disregarded entity. A disregarded entity should instead check the appropriate box for the tax classification of its owner. <input type="checkbox"/> Other (see instructions) _____ </p>	<p>4 Exemptions (codes apply only to certain entities, not individuals; see instructions on page 3):</p> <p>Exempt payee code (if any) _____</p> <p>Exemption from Foreign Account Tax Compliance Act (FATCA) reporting code (if any) _____</p> <p style="text-align: right;"><i>(Applies to accounts maintained outside the United States.)</i></p>
	<p>3b If on line 3a you checked "Partnership" or "Trust/estate," or checked "LLC" and entered "P" as its tax classification, and you are providing this form to a partnership, trust, or estate in which you have an ownership interest, check this box if you have any foreign partners, owners, or beneficiaries. See instructions <input type="checkbox"/></p>	
	<p>5 Address (number, street, and apt. or suite no.). See instructions.</p> <p>96 U.S. Highway 206, Suite 101</p>	<p>Requester's name and address (optional)</p>
	<p>6 City, state, and ZIP code</p> <p>Flanders, NJ 07836</p>	
	<p>7 List account number(s) here (optional)</p>	

Part I Taxpayer Identification Number (TIN)

Enter your TIN in the appropriate box. The TIN provided must match the name given on line 1 to avoid backup withholding. For individuals, this is generally your social security number (SSN). However, for a resident alien, sole proprietor, or disregarded entity, see the instructions for Part I, later. For other entities, it is your employer identification number (EIN). If you do not have a number, see *How to get a TIN*, later.

Social security number											
<table border="1" style="width: 100%; height: 20px;"> <tr> <td style="width: 25%;"></td> <td style="width: 25%;"></td> <td style="width: 25%;"></td> <td style="width: 25%;"></td> </tr> </table>					<table border="1" style="width: 100%; height: 20px;"> <tr> <td style="width: 25%;"></td> <td style="width: 25%;"></td> <td style="width: 25%;"></td> <td style="width: 25%;"></td> </tr> </table>						
or											
Employer identification number											
<table border="1" style="width: 100%; height: 20px;"> <tr> <td style="width: 12.5%;">2</td> <td style="width: 12.5%;">2</td> <td style="width: 12.5%;">-</td> <td style="width: 12.5%;">2</td> <td style="width: 12.5%;">7</td> <td style="width: 12.5%;">5</td> <td style="width: 12.5%;">0</td> <td style="width: 12.5%;">9</td> <td style="width: 12.5%;">7</td> <td style="width: 12.5%;">1</td> </tr> </table>	2	2	-	2	7	5	0	9	7	1	
2	2	-	2	7	5	0	9	7	1		

Note: If the account is in more than one name, see the instructions for line 1. See also *What Name and Number To Give the Requester* for guidelines on whose number to enter.

Part II Certification

Under penalties of perjury, I certify that:

1. The number shown on this form is my correct taxpayer identification number (or I am waiting for a number to be issued to me); and
2. I am not subject to backup withholding because (a) I am exempt from backup withholding, or (b) I have not been notified by the Internal Revenue Service (IRS) that I am subject to backup withholding as a result of a failure to report all interest or dividends, or (c) the IRS has notified me that I am no longer subject to backup withholding; and
3. I am a U.S. citizen or other U.S. person (defined below); and
4. The FATCA code(s) entered on this form (if any) indicating that I am exempt from FATCA reporting is correct.

Certification instructions. You must cross out item 2 above if you have been notified by the IRS that you are currently subject to backup withholding because you have failed to report all interest and dividends on your tax return. For real estate transactions, item 2 does not apply. For mortgage interest paid, acquisition or abandonment of secured property, cancellation of debt, contributions to an individual retirement arrangement (IRA), and, generally, payments other than interest and dividends, you are not required to sign the certification, but you must provide your correct TIN. See the instructions for Part II, later.

Sign Here	Signature of U.S. person	Date 7/17/2024
------------------	--------------------------	-----------------------

General Instructions

Section references are to the Internal Revenue Code unless otherwise noted.

Future developments. For the latest information about developments related to Form W-9 and its instructions, such as legislation enacted after they were published, go to www.irs.gov/FormW9.

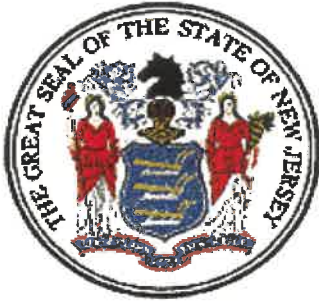
What's New

Line 3a has been modified to clarify how a disregarded entity completes this line. An LLC that is a disregarded entity should check the appropriate box for the tax classification of its owner. Otherwise, it should check the "LLC" box and enter its appropriate tax classification.

New line 3b has been added to this form. A flow-through entity is required to complete this line to indicate that it has direct or indirect foreign partners, owners, or beneficiaries when it provides the Form W-9 to another flow-through entity in which it has an ownership interest. This change is intended to provide a flow-through entity with information regarding the status of its indirect foreign partners, owners, or beneficiaries, so that it can satisfy any applicable reporting requirements. For example, a partnership that has any indirect foreign partners may be required to complete Schedules K-2 and K-3. See the Partnership Instructions for Schedules K-2 and K-3 (Form 1065).

Purpose of Form

An individual or entity (Form W-9 requester) who is required to file an information return with the IRS is giving you this form because they



STATE OF NEW JERSEY
DEPARTMENT OF THE TREASURY
DIVISION OF PROPERTY MANAGEMENT AND CONSTRUCTION

NOTICE OF CONSULTANT PREQUALIFICATION

FIRM: SUBURBAN CONSULTING ENGINEERS INC.
ADDRESS: 96 U.S. HIGHWAY 206, SUITE 101
FLANDERS, NJ 07836

INITIAL REVISED RENEWAL

DATE OF ISSUE: AUGUST 28, 2024
EXPIRATION DATE: AUGUST 31, 2026
FEDERAL ID NUMBER: 222 750 971

MBE WBE SBE VOB

The Experience Questionnaire (FORM 48A), submitted by your firm, has been reviewed. As a result of this review, your firm may be invited to submit proposals for projects involving the checked discipline(s) having a not to exceed Construction Cost Estimate (CCE) as noted. For the purposes of this form, NA = no fixed amount.

<input type="checkbox"/> ARCHITECTURE	_____	<input checked="" type="checkbox"/> ROOFING CONSULTANT	3 MILLION
<input checked="" type="checkbox"/> ELECTRICAL ENGINEERING	5 MILLION	<input type="checkbox"/> ACOUSTICS	_____
<input type="checkbox"/> HVAC ENGINEERING	_____	<input type="checkbox"/> ASBESTOS DESIGN	_____
<input type="checkbox"/> PLUMBING ENGINEERING	_____	<input checked="" type="checkbox"/> ASBESTOS SAFETY MONITORING	NA
<input checked="" type="checkbox"/> CIVIL ENGINEERING	10 MILLION	<input type="checkbox"/> CLAIMS ANALYSIS	_____
<input checked="" type="checkbox"/> SANITARY ENGINEERING	10 MILLION	<input type="checkbox"/> TELECOMMUNICATIONS	_____
<input checked="" type="checkbox"/> STRUCTURAL ENGINEERING	10 MILLION	<input checked="" type="checkbox"/> FEASIBILITY PLANNING	5 MILLION
<input type="checkbox"/> ELEVATOR/CONVEYOR ENGINEERING	_____	<input type="checkbox"/> FIRE DETECTION SYSTEMS	_____
<input type="checkbox"/> SOILS ENGINEERING	_____	<input type="checkbox"/> FIRE PROTECTION SYSTEMS	_____
<input type="checkbox"/> FIRE PROTECTION ENGINEERING	_____	<input type="checkbox"/> FOOD SERVICE	_____
<input checked="" type="checkbox"/> ENVIRONMENTAL ENGINEERING	10 MILLION	<input type="checkbox"/> HYDRAULICS/PNEUMATICS	_____
<input type="checkbox"/> MARINE ENGINEERING	_____	<input type="checkbox"/> HYDROLOGY	_____
<input checked="" type="checkbox"/> LANDSCAPE DESIGN	3 MILLION	<input type="checkbox"/> SECURITY SYSTEMS	_____
<input checked="" type="checkbox"/> PLANNING	5 MILLION	<input checked="" type="checkbox"/> SITE PLANNING	5 MILLION
<input checked="" type="checkbox"/> LAND SURVEYING	NA	<input type="checkbox"/> HISTORIC PRESERVATION CONSULTANT	_____
<input type="checkbox"/> AERIAL SURVEYING	_____	<input type="checkbox"/> ENERGY AUDITING	_____
<input type="checkbox"/> HYDROGRAPHIC SURVEYING	_____	<input type="checkbox"/> TRAFFIC	_____
<input type="checkbox"/> FIRE & LIFE SAFETY RENOVATIONS	_____	<input checked="" type="checkbox"/> TRANSPORTATION	5 MILLION
<input type="checkbox"/> BUILDING COMMISSIONING	_____	<input checked="" type="checkbox"/> WASTE/WATER TREATMENT	5 MILLION
<input type="checkbox"/> BOILER/STEAM LINES/HIGH PRESSURE SYS.	_____	<input type="checkbox"/> ENERGY MANAGEMENT CONTROL SYSTEM	_____
<input type="checkbox"/> DAM/LEVEE DESIGN	_____	<input type="checkbox"/> RENEWAL ENERGY CONSULTANT	_____
<input checked="" type="checkbox"/> BARRIER FREE/ADA DESIGN	5 MILLION	<input checked="" type="checkbox"/> CONSTRUCTION FIELD INSPECTION	3 MILLION
<input checked="" type="checkbox"/> ESTIMATING/COST ANALYSIS	NA	<input checked="" type="checkbox"/> PROJECT MANAGEMENT	3 MILLION
<input type="checkbox"/> INTERIOR DESIGN/SPACE PLANNING	_____	<input checked="" type="checkbox"/> ENVIRONMENTAL CONSULTANT	NA
<input checked="" type="checkbox"/> ROOFING INSPECTION	3 MILLION	<input type="checkbox"/> STORAGE TANK REMOVAL	_____
<input type="checkbox"/> CONSTRUCTION MANAGEMENT	_____	<input type="checkbox"/> STORAGE TANK INSTALLATION	_____
<input type="checkbox"/> CPM	_____	<input type="checkbox"/> PERIMETER SECURITY FENCING	_____
<input type="checkbox"/> ARCHAEOLOGY	_____	<input type="checkbox"/> INDOOR AIR QUALITY TESTING	_____
<input type="checkbox"/> GEOLOGY	_____	<input checked="" type="checkbox"/> LANDFILL CLOSURE	NA
<input checked="" type="checkbox"/> VALUE ENGINEERING	NA	<input type="checkbox"/> LEAD PAINT EVALUATION	_____
<input type="checkbox"/> HISTORIC PRESERVATION/RESTORATION	_____		

PREPARED BY:

APPROVED BY:

Jennifer Roedel

JENNIFER ROECKEL
MANAGER, PREQUALIFICATION UNIT

Janette M. Barnard

JANETTE M. BARNARD
DEPUTY DIRECTOR

**CONSULTANT NOTICE OF PREQUALIFICATION**

for

Suburban Consulting Engineers, Inc.
96 US Highway 206, Suite 101
Flanders, nj 07836

In accordance with N.J.A.C. 19:38A, your firm has been approved with the NSDA for Prequalification:

Effective Date: September 5, 2024

Expiration Date: August 31, 2026

<input type="checkbox"/>	Architecture		<input type="checkbox"/>	Acoustics	
<input checked="" type="checkbox"/>	Electrical Engineering	\$ 5 Million	<input checked="" type="checkbox"/>	Roofing Consultant	\$ 3 Million
<input type="checkbox"/>	HVAC Engineering		<input type="checkbox"/>	Asbestos Management & Design	
<input type="checkbox"/>	Plumbing Engineering		<input checked="" type="checkbox"/>	Asbestos Safety Control Monitoring	\$ UNLIMITED
<input checked="" type="checkbox"/>	Civil Engineering	\$ 10 Million	<input type="checkbox"/>	Claims Analysis	
<input checked="" type="checkbox"/>	Sanitary Engineering	\$ 10 Million	<input type="checkbox"/>	Telecommunications	
<input checked="" type="checkbox"/>	Structural Engineering	\$ 10 Million	<input checked="" type="checkbox"/>	Feasibility/Master Planning	\$ 5 Million
<input type="checkbox"/>	Elevators & Conveyors		<input type="checkbox"/>	Fire Detection Systems	
<input type="checkbox"/>	Soils Engineering		<input type="checkbox"/>	Fire Protection Systems	
<input type="checkbox"/>	Fire Protection Engineering		<input type="checkbox"/>	Food Service	
<input checked="" type="checkbox"/>	Environmental Engineering	\$ 10 Million	<input type="checkbox"/>	Hydraulics/Pneumatics	
<input type="checkbox"/>	Marine Engineering		<input type="checkbox"/>	Hydrology	
<input checked="" type="checkbox"/>	Landscape Design	\$ 3 Million	<input type="checkbox"/>	Security Systems	
<input checked="" type="checkbox"/>	Planning	\$ 5 Million	<input checked="" type="checkbox"/>	Site Planning	\$ 5 Million
<input checked="" type="checkbox"/>	Land Surveying	\$ UNLIMITED	<input type="checkbox"/>	Historic Preservation Consultant	
<input type="checkbox"/>	Aerial Surveying		<input type="checkbox"/>	Energy Auditing	
<input type="checkbox"/>	Hydrographic Surveying		<input type="checkbox"/>	Traffic	
<input type="checkbox"/>	Fire & Life Safety Renovations		<input checked="" type="checkbox"/>	Transportation	\$ 5 Million
<input type="checkbox"/>	Building Commissioning		<input checked="" type="checkbox"/>	Waste/Water Treatment	\$ 5 Million
<input type="checkbox"/>	Boiler/Steam Lines/High Pressure Systems		<input type="checkbox"/>	Energy Management Control Systems	
<input type="checkbox"/>	Dam/Levee Design		<input type="checkbox"/>	Renewable Energy Design Consultant	
<input checked="" type="checkbox"/>	Barrier Free/ADA Design	\$ 5 Million	<input checked="" type="checkbox"/>	Construction Field Inspection	\$ 3 Million
<input checked="" type="checkbox"/>	Estimating/Cost Analysis	\$ UNLIMITED	<input checked="" type="checkbox"/>	Project Management	\$ 3 Million
<input type="checkbox"/>	Interior Design/Space Planning		<input checked="" type="checkbox"/>	Environmental Consultant	\$ UNLIMITED
<input checked="" type="checkbox"/>	Roofing Inspection	\$ 3 Million	<input type="checkbox"/>	Underground Storage Tank Installation	
<input type="checkbox"/>	Construction Management		<input type="checkbox"/>	Underground Storage Tank Removal	
<input type="checkbox"/>	CPM Scheduling		<input type="checkbox"/>	Premier Security Fencing	
<input type="checkbox"/>	Archaeology		<input type="checkbox"/>	Indoor Air Quality	
<input type="checkbox"/>	Geology		<input checked="" type="checkbox"/>	Landfill Closure	\$ UNLIMITED
<input checked="" type="checkbox"/>	Value Engineering	\$ UNLIMITED	<input type="checkbox"/>	Lead Paint Evaluation/Inspection	
<input type="checkbox"/>	Historical Preservation/Restoration				

ANY ATTEMPT TO ALTER OR MISREPRESENT ANY INFORMATION CONTAINED IN THIS NOTICE MAY RESULT IN PROSECUTION, DEBARMENT, AND/OR DISQUALIFICATION.

Information contained in this notice can be verified at: <https://sda03.njsda.gov/PublicReportsUI/VendorSearch.aspx>

**STATE OF NEW JERSEY
DEPARTMENT OF THE TREASURY
DIVISION OF REVENUE AND ENTERPRISE SERVICES
SHORT FORM STANDING**

SUBURBAN CONSULTING ENGINEERS INC.

0100314170

I, the Treasurer of the State of New Jersey, do hereby certify that the above-named New Jersey Domestic For-Profit Corporation was registered by this office on October 16, 1986.

As of the date of this certificate, said business continues as an active business in good standing in the State of New Jersey, and its Annual Reports are current.

I further certify that the registered agent and office are:

**CORPORATION SERVICE COMPANY
PRINCETON SOUTH CORPORATE CENTER,
SUITE 160, 100 CHARLES EWING BLVD
EWING, NJ 08628**



IN TESTIMONY WHEREOF, I have hereunto set my hand and affixed my Official Seal at Trenton, this 6th day of August, 2024

A handwritten signature in black ink, appearing to read "Elizabeth Maher Muoio".

**Elizabeth Maher Muoio
State Treasurer**

Certificate Number : 6155951384

Verify this certificate online at

https://www1.state.nj.us/TYTR_StandingCert/JSP/Verify_Cert.jsp



PHILIP D. MURPHY
Governor

TAHESHA L. WAY
Lieutenant Governor

LOCATION
101 S BROAD ST
TRENTON NJ 08608

STATE OF NEW JERSEY
DEPARTMENT OF COMMUNITY AFFAIRS
DIVISION OF CODES AND STANDARDS
LEAD HAZARD UNIT

JAOUELYN A. SUÁREZ
Acting Commissioner

MAILING ADDRESS
PO BOX 816
TRENTON NJ 08625

Certificate - Lead Evaluation Contractor

CERTIFIED

This is to certify that the Department of Community Affairs has certified

SUBURBAN CONSULTING ENGINEERS
96 US HIGHWAY 206, SUITE 101
FLANDERS NJ 07836

To act as a Lead Evaluation Contractor on the following Projects

Residential
Public Buildings
Comm/Steel Structure

Cert #: 00796-E
Effective Date: 2/1/2024
Expiration Date: 1/31/2026
Certificate Type: 2 YEAR